

COVID-19 Coronavirus: How Philanthropy Can Respond

March 5, 2020



Center for Disaster Philanthropy
The when, where and how of informed disaster giving

Moderator

2



Regine A. Webster

Vice President

Center for Disaster Philanthropy



Center for Disaster Philanthropy
The when, where and how of informed disaster giving

Thank You to Our Sponsors

3

This webinar is provided with generous funding from:



And is co-sponsored by:



MINNESOTA COUNCIL
ON FOUNDATIONS



How to Participate

4

- Use **#CDP4Recovery** to tweet along during the webinar.
- Submit questions using Q & A box at the bottom of your screen.
- Look for webinar recording and summary at disasterphilanthropy.org.



Center for Disaster Philanthropy
The when, where and how of informed disaster giving

Topics for Today

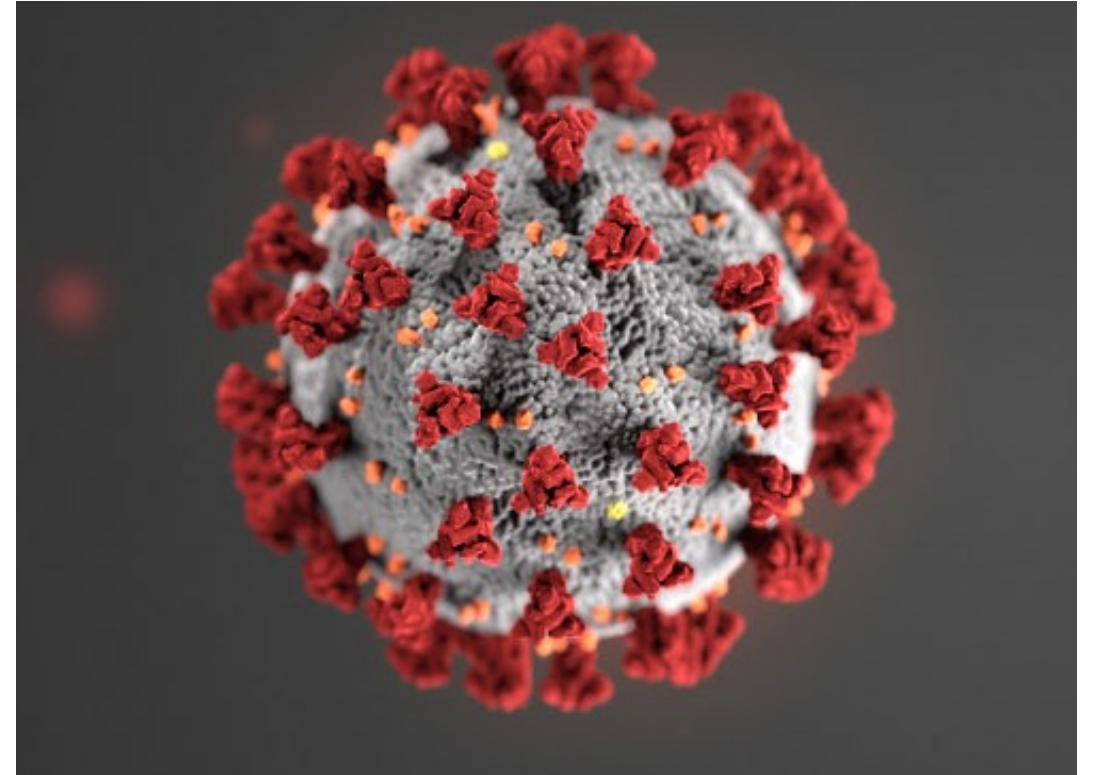
5

- ❑ The nature of a potential pandemic and the implications for response and recovery.
- ❑ What the most likely needs will be at each stage of the pandemic.
- ❑ The role philanthropy can play during pandemics including advocacy, sharing accurate messaging, and funding preparedness, response and mitigation.
- ❑ Why philanthropic response matters at both the domestic and international levels.

Coronavirus 101

6

- ❑ Coronaviruses are a class of virus, named for their circular shape, that cause 15-20 percent of all colds but also can be more severe such as MERS and SARS.
- ❑ This virus has been given the name severe acute respiratory syndrome coronavirus 2 (SARS-CoV-2) to represent that it is a sister of the original SARS virus.
- ❑ The disease the virus causes has been named coronavirus disease 2019 (COVID-19).
- ❑ As of this morning, there have been 96,888 confirmed cases of COVID-19 in 86 countries around the world.



Source: CDC

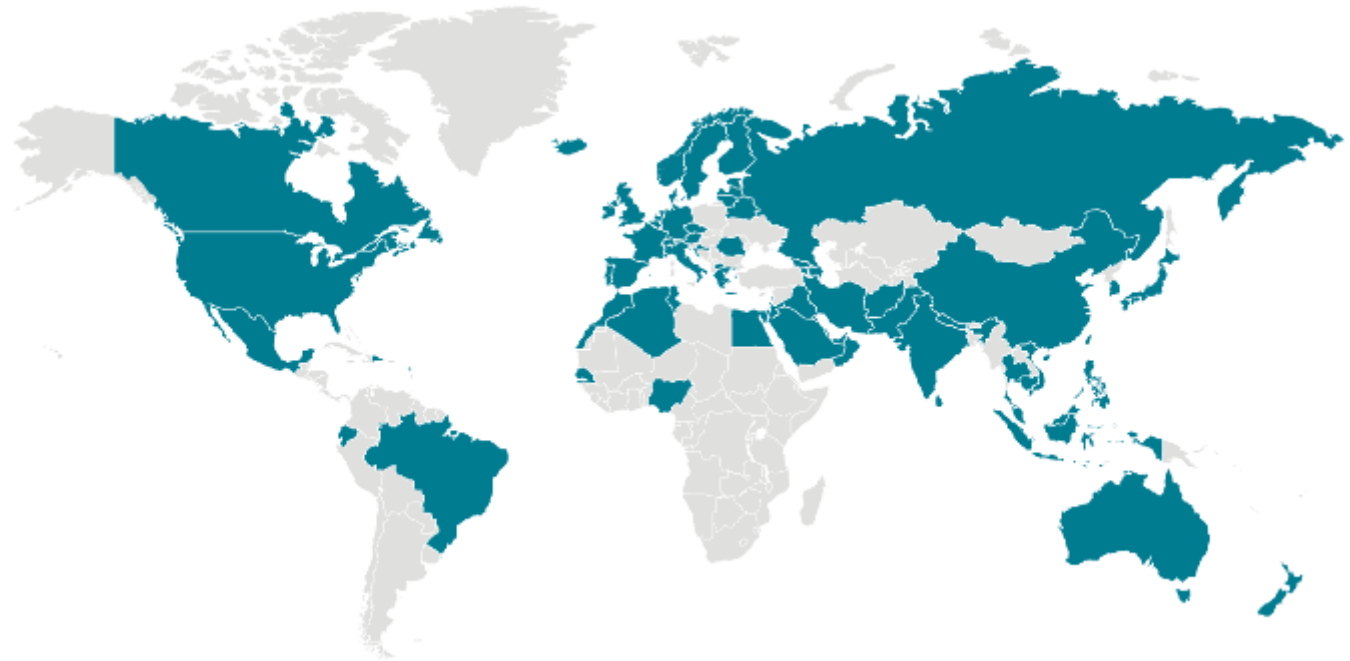


Center for Disaster Philanthropy
The when, where and how of informed disaster giving

Facts about COVID-19

7

- In a study of 72,000+ cases of COVID-19 in mainland China, researchers found:
 - ▣ Overall 2.3% case fatality rate (CFR). The WHO now says 3.4%.
 - ▣ Most cases are mild but among the critically ill, the CFR was 49.0%.
 - ▣ 87% of patients were aged 30 to 79 years
 - ▣ This disease hits the elderly the hardest – CFR was 14.8% in patients 80 and older and 8.0% in patients ages 70 to 79.
 - ▣ More transmissible than SARS or MERS but less deadly. SARS had a CFR of 9.6%; MERS has a CFR of 34.4%. The flu usually has a CFR of 0.1%.



Source: CDC



Center for Disaster Philanthropy
The when, where and how of informed disaster giving

Speakers

8



Jeff Schlegelmilch
Deputy Director,
*National Center for Disaster
Preparedness*



Dr. Judy Monroe
President and CEO,
CDC Foundation



Sheena Agarwal
Vice President of Strategic
Partnerships, U.S.,
Give2Asia



Center for Disaster Philanthropy
The when, where and how of informed disaster giving

National Center for Disaster Preparedness

9



Jeff Schlegelmilch

Deputy Director,

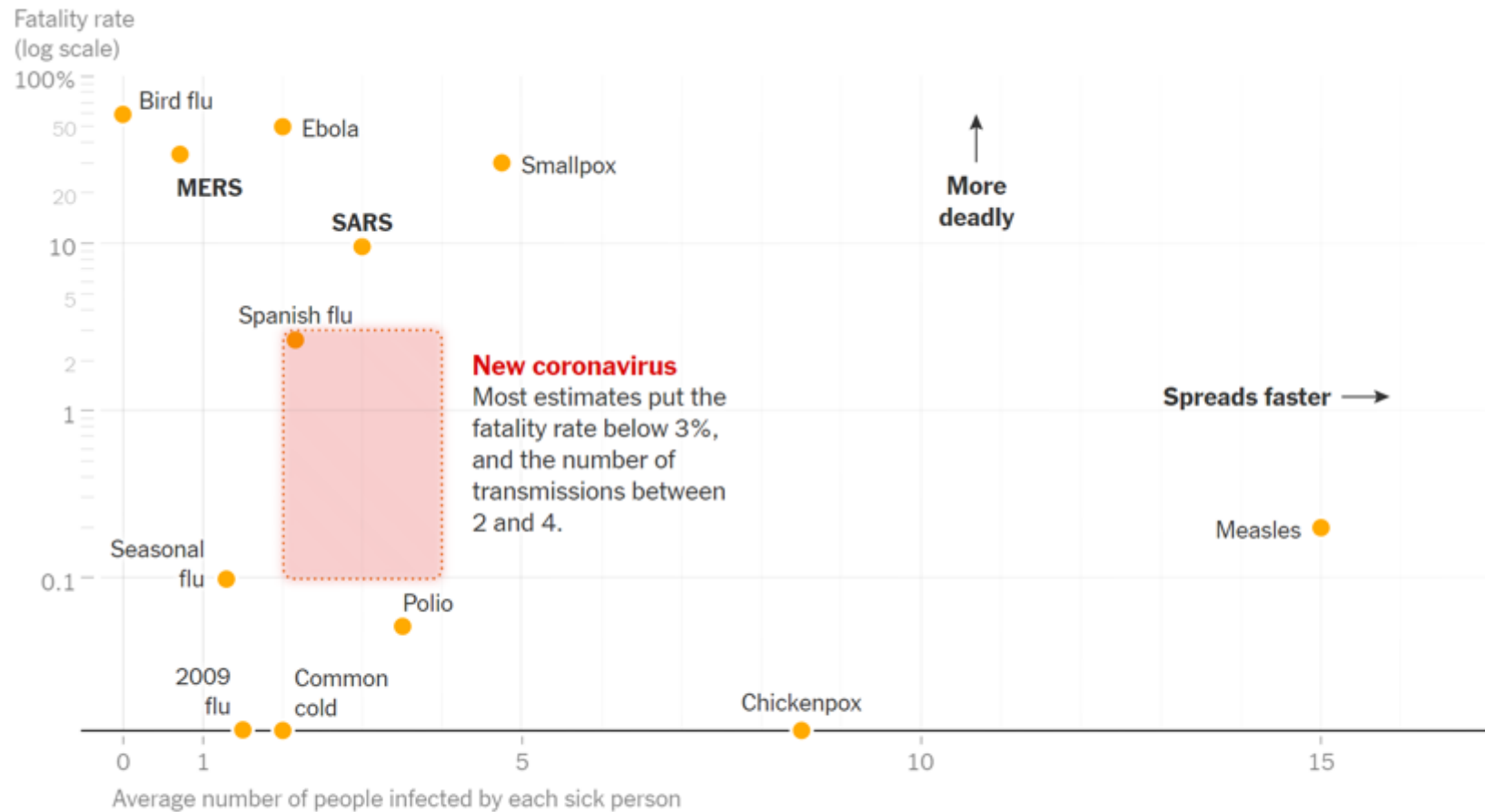
National Center for Disaster Preparedness



Center for Disaster Philanthropy

The when, where and how of informed disaster giving

COVID-19 is Currently Defined by Uncertainty



Note: Average case-fatality rates and transmission numbers are shown. Estimates of case-fatality rates can vary, and numbers for the new coronavirus are preliminary estimates.

Source: Sheikh, K., Watkins, D., Wu, J., & Gröndahl, M. (2020). How Bad Will the Coronavirus Outbreak Get? Here Are 6 Key Factors. The New York Times. <https://www.nytimes.com/interactive/2020/world/asia/china-coronavirus-contain.html>

Social Distancing Has Downsides



Source: FEMA. https://www.fema.gov/media-library-data/1441212988001-1aa7fa978c5f999ed088dcaa815cb8cd/3a_BusinessInfographic-1.pdf

Figure 10. Would cover a \$400 emergency expense using cash or its equivalent (by survey year)

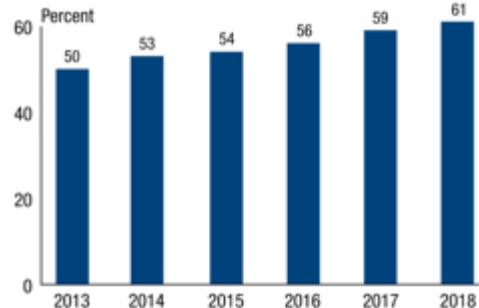
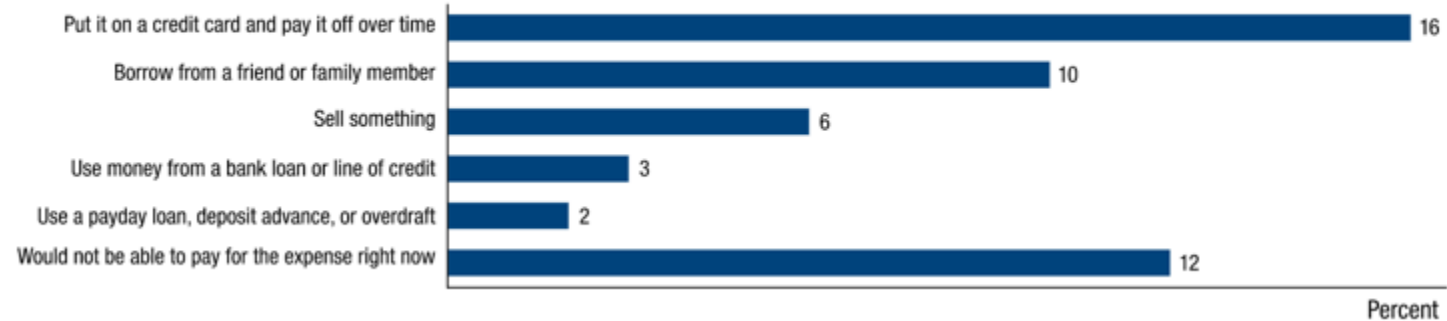


Figure 11. Other ways individuals would cover a \$400 emergency expense

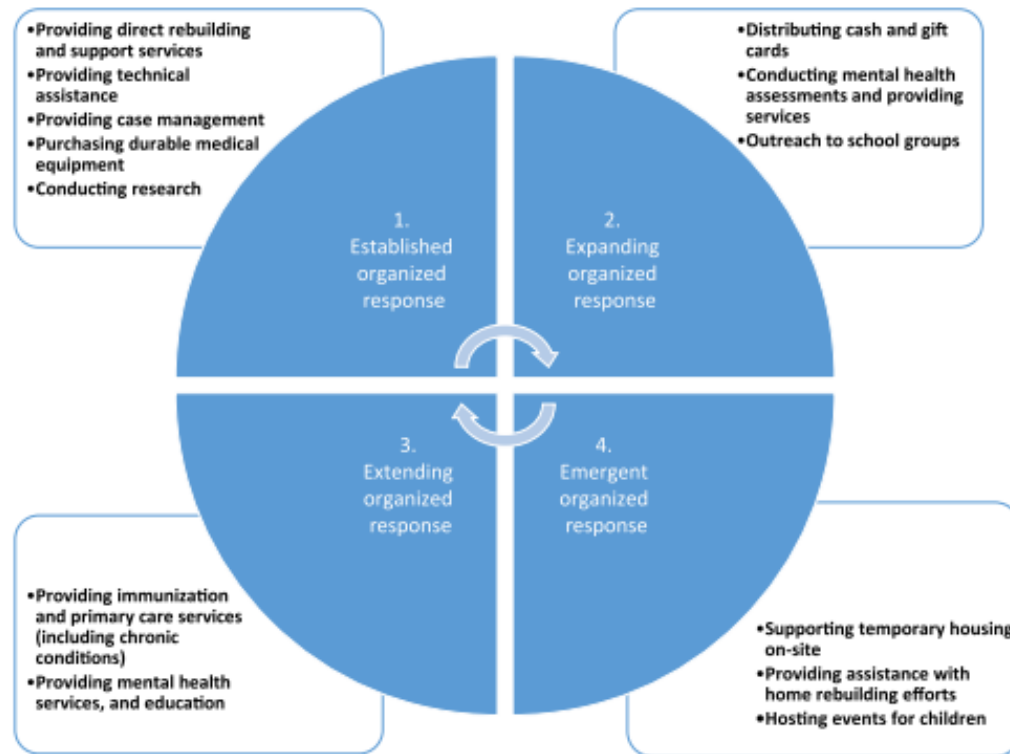


Source: US Federal Reserve. <https://www.federalreserve.gov/publications/2019-economic-well-being-of-us-households-in-2018-dealing-with-unexpected-expenses.htm>

Emergent Actors Will Be Critical

FIGURE 1

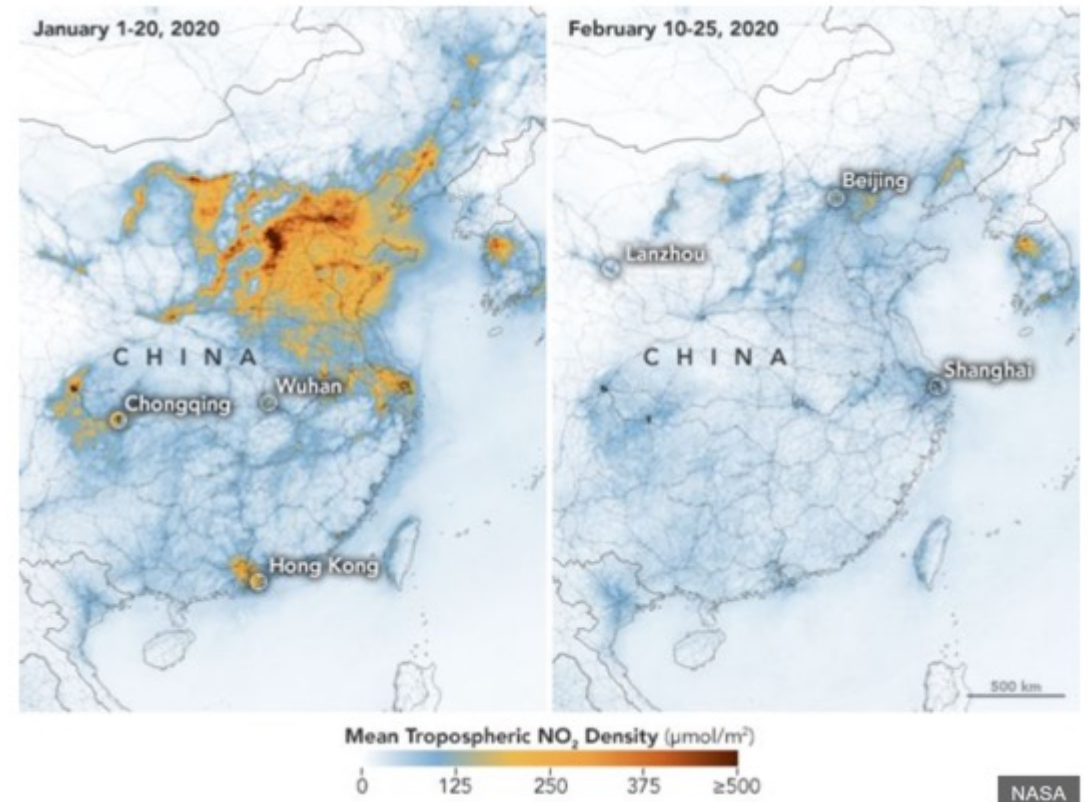
Organizational Disaster Response Behavior of Several Different Actors Within the Health System.



Source: Schlegelmilch, J., Sury, J., Brooks, J., & Chandler, T. (2019). A philanthropic approach to supporting emergent disaster response and recovery. Disaster medicine and public health preparedness, 1-3. <https://academiccommons.columbia.edu/doi/10.7916/d8-bkbq-g780>

How Can Philanthropy Help

- Support community safety nets
 - E.g. Food pantries, Income replacement for lost wages, Housing assistance, Credit counseling, etc.
- Help with preparedness
 - Not everyone can afford several days worth of supplies and medications
- Risk communications support
 - Messaging to staff, clients
- Support telework solutions in support of social distancing policies
 - Secure file sharing and collaboration platforms
- Support Small Businesses
 - Technical assistance from continuity planners
 - Emergency grants / loans to sustain payroll



Source: Coronavirus: Nasa images show China pollution clear amid slowdown. BBC News. <https://www.bbc.com/news/world-asia-51691967>

Key Takeaways

1. There is still a lot of uncertainty about COVID-19, and its potential impacts
2. Disruptions are already being experienced, and the most vulnerable are the most at risk for negative impacts from mitigation and containment efforts
3. Maintaining community lifelines and safety nets are one of the most important contributions of the philanthropic community

CDC Foundation

15



Dr. Judy Monroe
President and CEO,
CDC Foundation



Center for Disaster Philanthropy
The when, where and how of informed disaster giving

Responding to COVID-19 in Asia

16



Sheena Agarwal

Vice President of Strategic Partnerships, U.S.,
Give2Asia



Center for Disaster Philanthropy
The when, where and how of informed disaster giving

Responding to COVID-19 in Asia

17



Transporting ventilators and blood analysis systems to Huanggang Central Hospital



Center for Disaster Philanthropy
The when, where and how of informed disaster giving

Responding to COVID-19 in Asia

18



Wuhan Union Hospital received and transferred isolation gowns.



Mass disinfection in Longtan community, Wuhan

Speakers

19



Jeff Schlegelmilch
Deputy Director,
*National Center for Disaster
Preparedness*



Dr. Judy Monroe
President and CEO,
CDC Foundation



Sheena Agarwal
Vice President of Strategic
Partnerships, U.S.,
Give2Asia



Center for Disaster Philanthropy
The when, where and how of informed disaster giving

Personal Preparedness

20



- ❑ **Quarantine** – 14 days if exposed/at-risk.
- ❑ **Isolation** – up to 3 weeks or more, usually in hospital.
- ❑ Expect **supply chain challenges** – limited supplies and panic purchases.
- ❑ **Avoid touching money** or wash hands after touching it. Wear gloves if you work with money.
- ❑ Are you ready for a **14-day quarantine**? Stock up now.



Center for Disaster Philanthropy
The when, where and how of informed disaster giving

Organizational Preparedness

21



- **Review your COOP/Disaster Emergency Plan** if you have one. If not, develop some COVID-19 specific plans.
- **Biggest impact will be quarantines.** If one staff member or visitor/vendor tests positive, it is possible that the entire staff will be quarantined.
- If there is only a **partial reduction of staff** how can needs be met without full staff complement?
- Are NGOs/current grantees in need **of extra and/or flexible resources?**
- Is a foundation **trying to launch a new fund** or manage grantmaking with limited resources?

Q & A

22

- Submit questions using the Q & A box at the bottom of your screen.
- Use **#CDP4Recovery** to tweet insights.



Jeff Schlegelmilch
Deputy Director,
*National Center for Disaster
Preparedness*



Dr. Judy Monroe
President and CEO,
CDC Foundation



Sheena Agarwal
Vice President of Strategic
Partnerships, U.S.,
Give2Asia



Center for Disaster Philanthropy
The when, where and how of informed disaster giving

Key Takeaways

23

- ❑ An ongoing and developing crisis like this is a good time to be flexible in funding.
- ❑ Allow local leaders and organizations on the ground to develop the programming as needs arise.
- ❑ There are going to be multiple phases and needs in this crisis – the medical response situation, support for research and assisting vulnerable people who have been impacted.
- ❑ Be planful about your giving. Don't just react to the latest media report.
- ❑ Research the facts. There is a lot of misinformation out there. We recommend the WHO and the CDC COVID-19 websites.
- ❑ International giving may be challenging. You will need to prepare to respond when governments ask for assistance.

Philanthropic Support

24

- ❑ CDP and Candid are tracking philanthropic donations to this outbreak.
- ❑ As of March 3, the total donations received stood at over \$1 billion
- ❑ CDP has a newly launched COVID-19 Response Fund
- ❑ For more information, visit www.disasterphilanthropy.org.



U.S. Air Force photo by Senior Airman Cody R. Miller

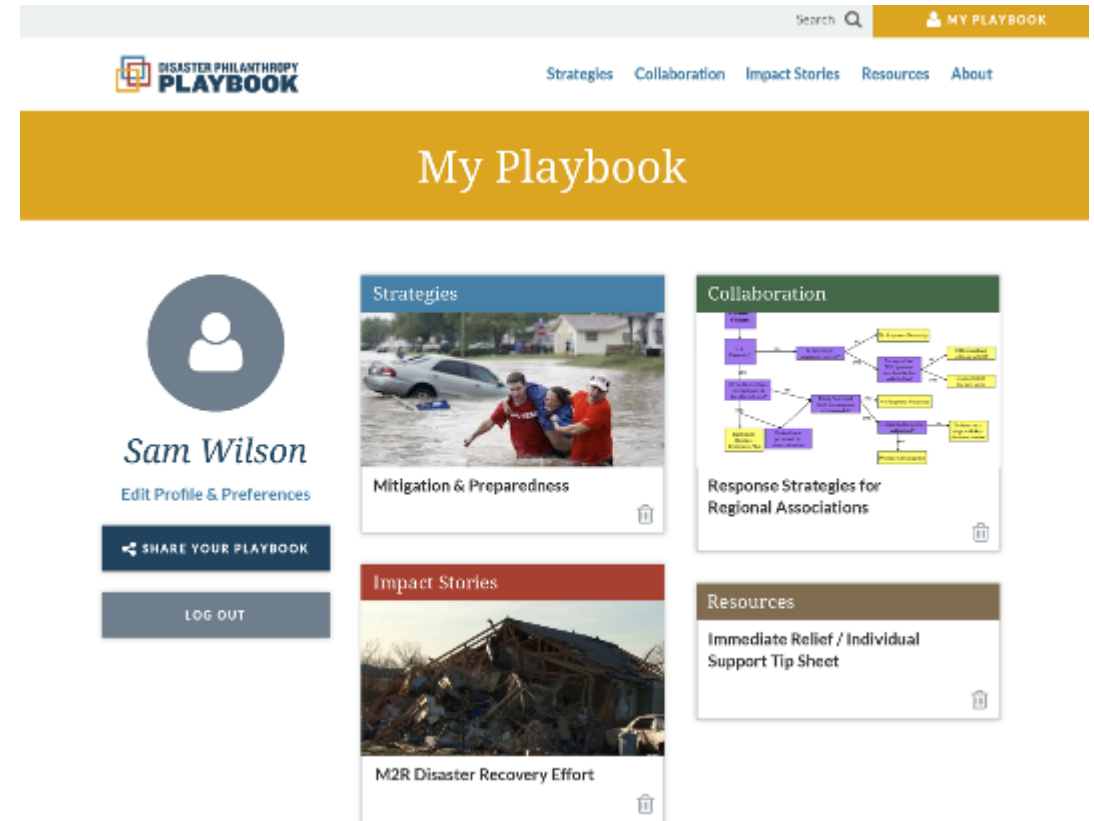


Center for Disaster Philanthropy
The when, where and how of informed disaster giving



DISASTER PHILANTHROPY PLAYBOOK

- The Disaster Playbook has a number of toolkits and resources to guide the philanthropic community in responding to future disasters.
- Learn more at www.disasterplaybook.org



Center for Disaster Philanthropy
The when, where and how of informed disaster giving

Questions?

For additional information, contact:

Regine A. Webster

Vice President

regine.webster@disasterphilanthropy.org



Center for Disaster Philanthropy

The when, where and how of informed disaster giving