

COVID-19: Place-based Grantmakers and Investing in Local Communities

May 12, 2020



Center for Disaster Philanthropy
The when, where and how of informed disaster giving

Moderator

2



Sally Ray

Director of Strategic Initiatives

Center for Disaster Philanthropy



Center for Disaster Philanthropy
The when, where and how of informed disaster giving

Thank You to Our Sponsors

3

This webinar is provided with generous support from Target.



And is co-sponsored by:



NATIONAL CENTER FOR
FAMILY PHILANTHROPY



National
Voluntary Organizations
Active in Disaster

COOPERATION | COMMUNICATION | COORDINATION | COLLABORATION



COUNCIL *on* FOUNDATIONS



A network for the common good



funders' network
FOR SMART GROWTH AND LIVABLE COMMUNITIES



InterAction

How to Participate

4

- Use **#CDP4Recovery** to tweet along during the webinar.
- Submit questions using Q & A box at the bottom of your screen.
- Look for webinar recording and summary at disasterphilanthropy.org.



Center for Disaster Philanthropy
The when, where and how of informed disaster giving

Resources from the Council on Foundations: Supporting Funders Responding to COVID-19

5

- ❑ Commit to supporting and listening to nonprofits:
www.cof.org/Pledge
- ❑ Access events, templates and tools for grantmakers:
www.cof.org/Covid19
- ❑ Read analysis of COVID-19 Legislation's impact on philanthropy:
www.cof.org/Covid19LawsGuide



A Call To Action for Philanthropy

6

- Add your voice to 700+ funders
- Pledge to:
 - ▣ Loosen restrictions on current grants.
 - ▣ Make new grants as unrestricted as possible.
 - ▣ Reduce requirements and what we ask from nonprofits.
 - ▣ Fund communities directly focused on health and economic impact.
 - ▣ Communicate proactively and often.
 - ▣ Listen, especially to those communities least heard.
 - ▣ Support advocacy and public policy changes that deliver an equitable and just emergency response.
 - ▣ Learn from emergency practices and consider adjusting practices in the future.




COUNCIL *on* FOUNDATIONS

www.COF.org/Pledge

Topics for Today

7

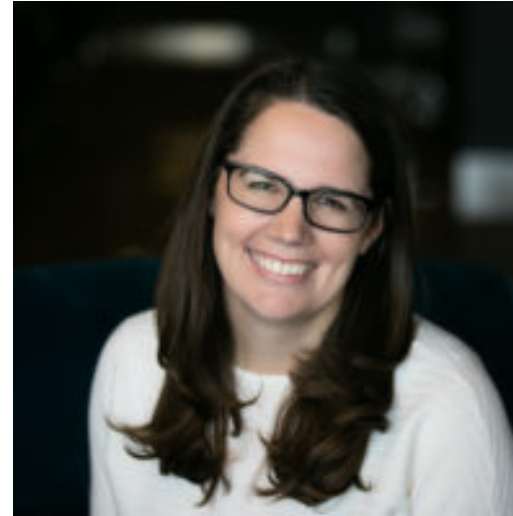
- ❑ The difference between traditional grantmaking versus place-based grantmaking.
- ❑ The ways in which COVID-19 is upsetting traditional modes of working and delivering services, and how philanthropy needs to respond.
- ❑ The disproportionate impact on vulnerable communities.
- ❑ The ways in which recovering from COVID-19 is going to involve creating a new philanthropic and nonprofit landscape that prioritizes equity, partnership and collaboration.

Speakers

8



Carmen James Randolph
Vice President for
Programs,
*Greater New Orleans
Foundation*



Maureen Lawless
Vice President and Director,
Member Services,
*Funders' Network for Smart
Growth and Livable
Communities*



Center for Disaster Philanthropy
The when, where and how of informed disaster giving

Place-Based Grantmaking

9

- ❑ Focuses on location/place, instead of program/service.
- ❑ Considers the unique local context, realities and trends:
 - ❑ Structural
 - ❑ Demographic
 - ❑ Economic
 - ❑ Environmental
- ❑ Uses a long-term approach with realistic timeframe.
- ❑ Prioritizes community engagement, collaboration, relationships and listening.
- ❑ Embeds an equity-centered lens (structures and systems).
- ❑ Is adaptive.

Greater New Orleans Foundation

Disaster Recovery and Resilience Investments

2005	Katrina and Rita
2007-2014	Community Revitalization Fund
2013 - present	Urban Water Initiatives and Coastal Investments
2016	Baton Rouge Floods
2017 (February)	New Orleans East Tornadoes
2017 (fall)	Harvey, Irma, and Maria
2018	Florence and Michael
2019	Barry and Dorian
2020	Earthquakes in Puerto Rico

Pillars of Disaster Grantmaking

11

RESILIENCE

Grantmaking should improve a place holistically to make it stronger than it was before the disaster.

EQUITY

Grantmaking should take historical inequity into account and inform investments.

SUSTAINABILITY

Grantmaking should take into account a long term view of an uncertain future.

DEMOCRATIC/ CIVIC PARTICIPATION

Grantmaking should equip and empower the most vulnerable to influence what happens in their communities.



Center for Disaster Philanthropy
The when, where and how of informed disaster giving

Place-Based Grantmaking and Philanthropy

12

- Opportunities:
 - ▣ To develop partners and relationships.
 - ▣ To inform practice.
 - ▣ To seed ideas, test concepts and facilitate learning.
 - ▣ For impact and measurement.
 - ▣ To address systemic, structural issues and outcomes.
 - ▣ To listen, learn and adapt.

Working with Local Funders

13

- For national/regional funders:
 - ▣ Identify community and place-based funders.
 - ▣ Discuss the local context
 - Nonprofit, community and grassroots leaders
 - Approaches to community engagement
 - Root challenges – systems, structures, needs
 - What's worked? What hasn't?
- Listen, learn, adapt.



Center for Disaster Philanthropy
The when, where and how of informed disaster giving

Centering Community and Addressing Critical Needs

14

- Proactive versus reactive.
- Strategic coordination with government, nonprofits, and philanthropy before and during a disaster.
- Talk to nonprofit partners early, learn the landscape, identify anchor organizations, and critical safety net partners.
- Pre-register Community Organizations Active in Disaster (COADs) and Volunteer Organizations in Disaster (VOADs) for electronic grantmaking.
- Focus attention on organizations serving most vulnerable populations and ensure that leaders of color are engaged and supported.

PPREP

15

- To build and strengthen community foundation leadership and capacity to help create more disaster ready and resilient communities in a 10-state Midwestern region.
 - ▣ Learning and leading
 - ▣ Tools and technical assistance
 - ▣ Grant resources
 - ▣ Network health and stewardship

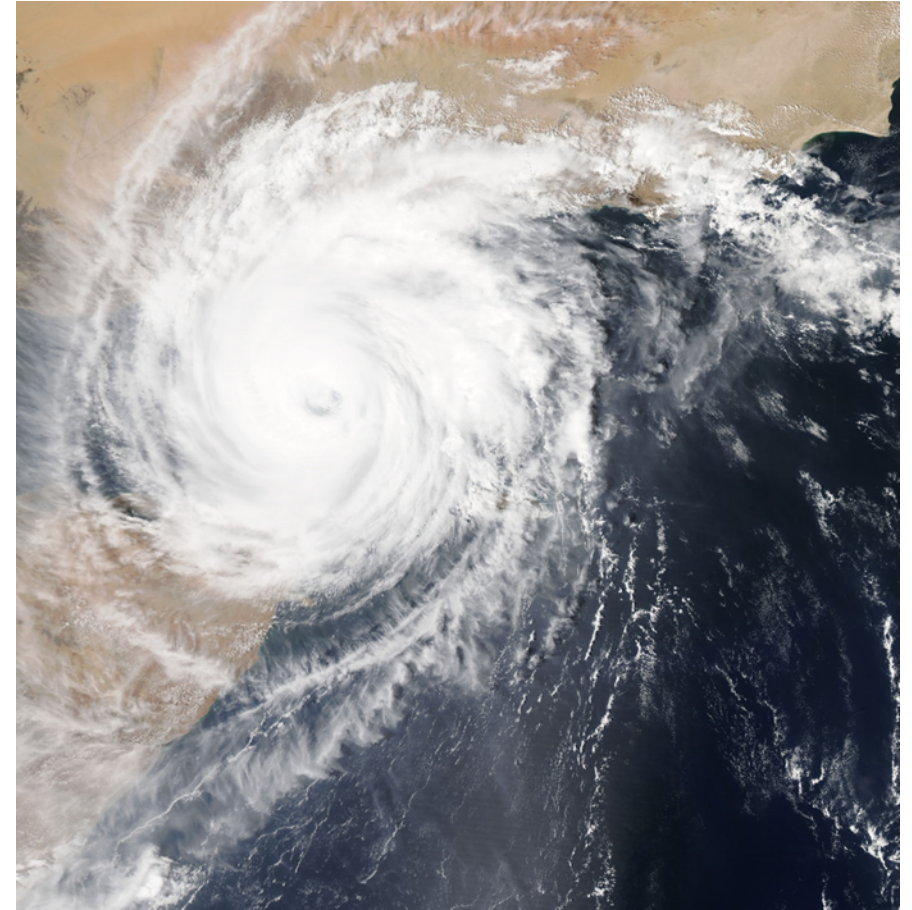


Center for Disaster Philanthropy
The when, where and how of informed disaster giving

When Waters Rise

16

- ❑ An initiative focused on equitable disaster recovery and resilience launched, June 2018.
- ❑ Targets community foundations and place-based funders' learning and exchange.
- ❑ Examines how local funders can foster and leverage equitable disaster recovery, rebuilding, and long-term resilience.



Center for Disaster Philanthropy
The when, where and how of informed disaster giving

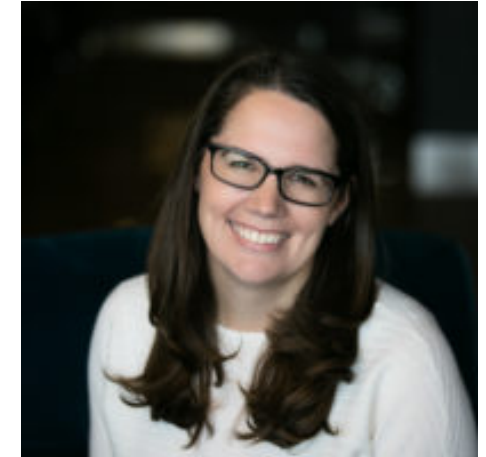
Q & A

17

- Submit questions using the Q & A box at the bottom of your screen.
- Use **#CDP4Recovery** to tweet insights.



Carmen James Randolph
Vice President for Programs,
Greater New Orleans Foundation



Maureen Lawless
Vice President and Director, Member
Services,
*Funders' Network for Smart Growth and
Livable Communities*



Center for Disaster Philanthropy
The when, where and how of informed disaster giving

Key Takeaways

18

- ❑ One size does not fit all.
- ❑ Begin by getting to know the community's leadership.
- ❑ It is important to grant “quick” dollars for community development work.
- ❑ Stay for the long haul.
- ❑ Collaborate and build coalitions.
- ❑ Inequity can be reduced by a focus on place.

Philanthropic Response

19

- ❑ CDP and Candid are tracking philanthropic donations to this pandemic.
- ❑ As of May 11, the total donations received stood at more than \$10.4 billion.
- ❑ CDP has a COVID-19 Response Fund that has awarded more than \$4.6 million to date.
- ❑ For more information, visit www.disasterphilanthropy.org.



Source: National Association of Free and Charitable Clinics



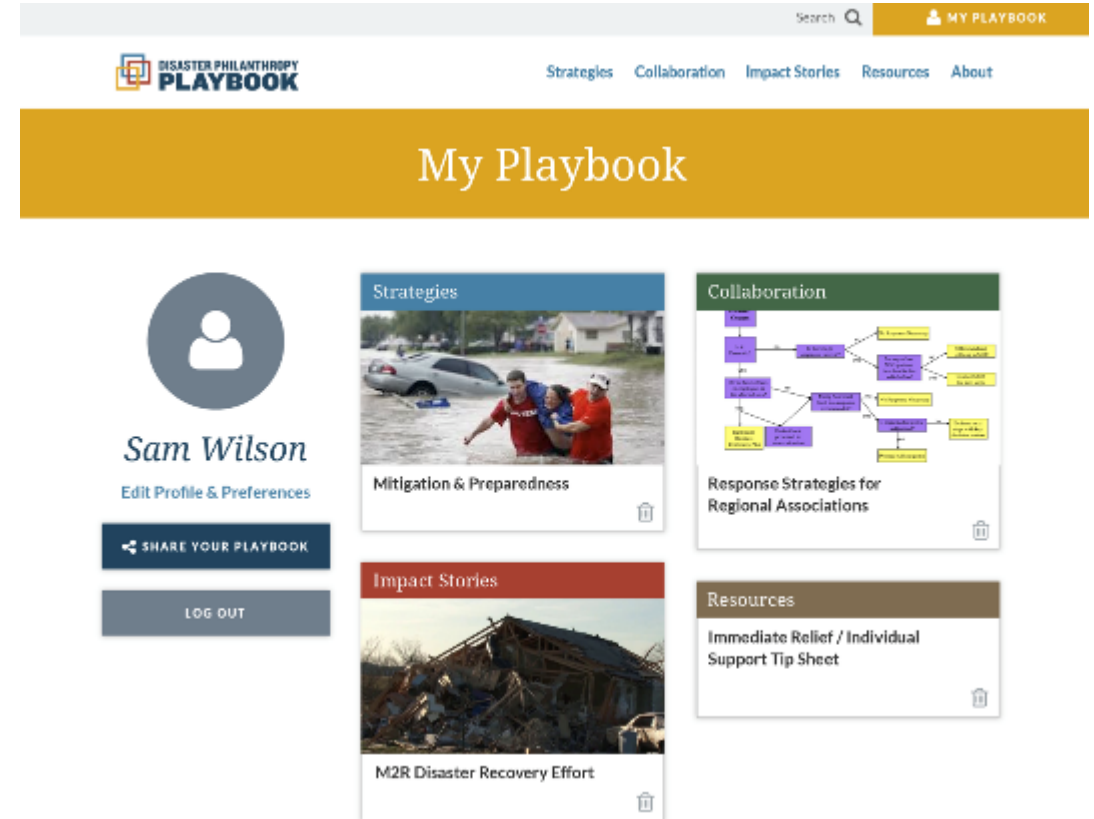
Center for Disaster Philanthropy
The when, where and how of informed disaster giving



DISASTER PHILANTHROPY PLAYBOOK

20

- ❑ The Disaster Playbook has a number of toolkits and resources to guide the philanthropic community in responding to future disasters.
- ❑ Learn more at www.disasterplaybook.org



Center for Disaster Philanthropy
The when, where and how of informed disaster giving

COVID-19 Series: Strategic Approaches for Funders

21

- Series of webinars taking place on the 2nd and 4th Tuesday of each month at 2 p.m. ET through July 14.
- The next webinar will be May 26: *COVID-19: How Philanthropy Can Stand Up for Vulnerable Populations*



Center for Disaster Philanthropy
The when, where and how of informed disaster giving

Questions?

For additional information, contact:

Sally Ray

Director of Strategic Initiatives

sally.ray@disasterphilanthropy.org



Center for Disaster Philanthropy

The when, where and how of informed disaster giving