

Measuring the State of Disaster Philanthropy 2020

Nov. 17, 2020

Candid.



Center for Disaster Philanthropy
The when, where and how of informed disaster giving

Moderator

2



Patty McIlreavy

President and CEO

Center for Disaster Philanthropy

Candid.



Center for Disaster Philanthropy
The when, where and how of informed disaster giving

How to Participate

3

- Use **#SODP2020** or **#CDP4Recovery** to tweet along during the webinar.
- Submit questions using Q & A box at the bottom of your screen.
- Look for webinar recording and summary at disasterphilanthropy.org.

Candid.



Center for Disaster Philanthropy
The when, where and how of informed disaster giving

Speakers & Agenda

4

- Disaster-Related Giving in 2018: Key Findings
- Philanthropic Response to Hurricane Florence and California Wildfires
- Q&A



Supriya Kumar
Global Partnerships Research
Manager,
Candid



Savi Horne
Executive Director,
Land Loss Prevention Project



David Little
Executive Vice President,
Programs &
Communications,
*North Valley Community
Foundation*

Candid.



Center for Disaster Philanthropy
The when, where and how of informed disaster giving

Thank You to Our Funder & Co-Sponsors

5

We appreciate the generous financial support from:



This webinar is co-sponsored by: **Candid.**



Stephanie Cuskley, CEO, Helmsley Charitable Trust

6



Center for Disaster Philanthropy
The when, where and how of informed disaster giving

Who We Are

7



Center for Disaster Philanthropy

- Founded in 2010.
- First full-time center advising donors on disaster-related giving.
- Our mission is to leverage the power of philanthropy to mobilize a full range of resources that strengthen the ability of communities to withstand disasters and recover equitably when they occur.

Candid.

- Created last year when Foundation Center and GuideStar joined forces.
- Through research, collaboration and training, Candid connects people who want to change the world to the resources they need to do it.

Disasters

8

- ❑ Disasters will happen, and philanthropy will be called upon to respond.
- ❑ Given the inevitability of disasters, it is imperative for funders to make use of their dollars in the most effective way possible.



Source: Forest Service NW



Source: Bob Behnken/NASA



Source: USDA

Philanthropy
and COVID-19
in the first half of 2020



Candid.

CDP Center for Disaster Philanthropy
The when, where and how of informed disaster giving

Philanthropy and COVID-19

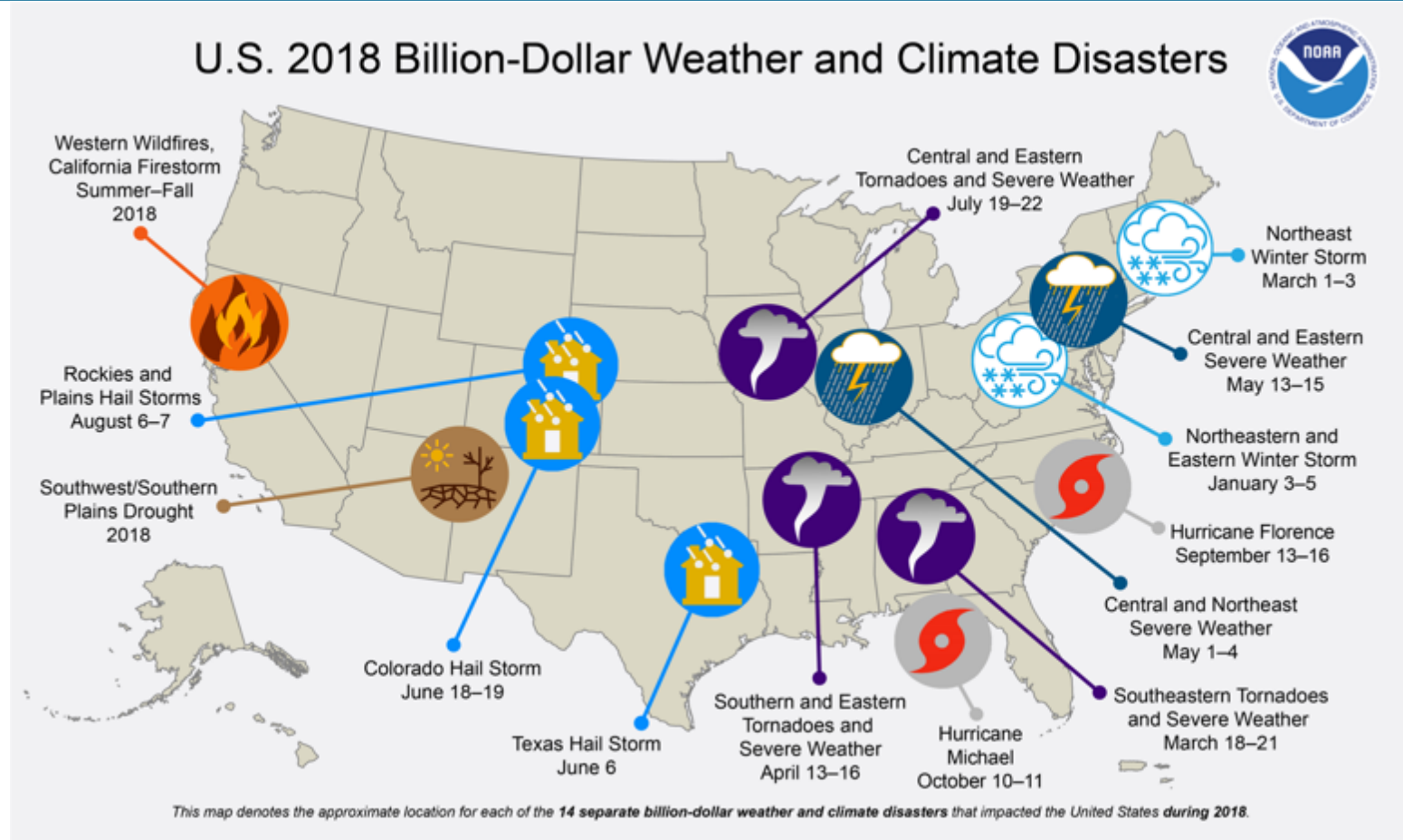
in the first half of 2020

A new report produced by

Candid. + **CDP** **Center for Disaster Philanthropy**
The when, where and how of informed disaster giving

2018 Billion Dollar Disasters

10



Candid.



Center for Disaster Philanthropy
The when, where and how of informed disaster giving

Questions for Philanthropy

11

- How did the funding community respond to disasters in 2018?
- How does the response of foundations fit into the larger landscape of disaster giving?
- What can funders do to become more effective in terms of disaster-related funding?

Candid.



Center for Disaster Philanthropy
The when, where and how of informed disaster giving

Taxonomy

12

DISASTER TYPES

COMPLEX HUMANITARIAN EMERGENCY

MAN-MADE ACCIDENT

GENERAL

NATURAL DISASTER

Drought

Extreme Temperature

Storm

Earthquake/Tsunami

Flood

Volcano

Epidemic

Mass Movement

Wildfire

DISASTER ASSISTANCE STRATEGIES



RESILIENCE,
RISK REDUCTION,
AND MITIGATION



PREPAREDNESS



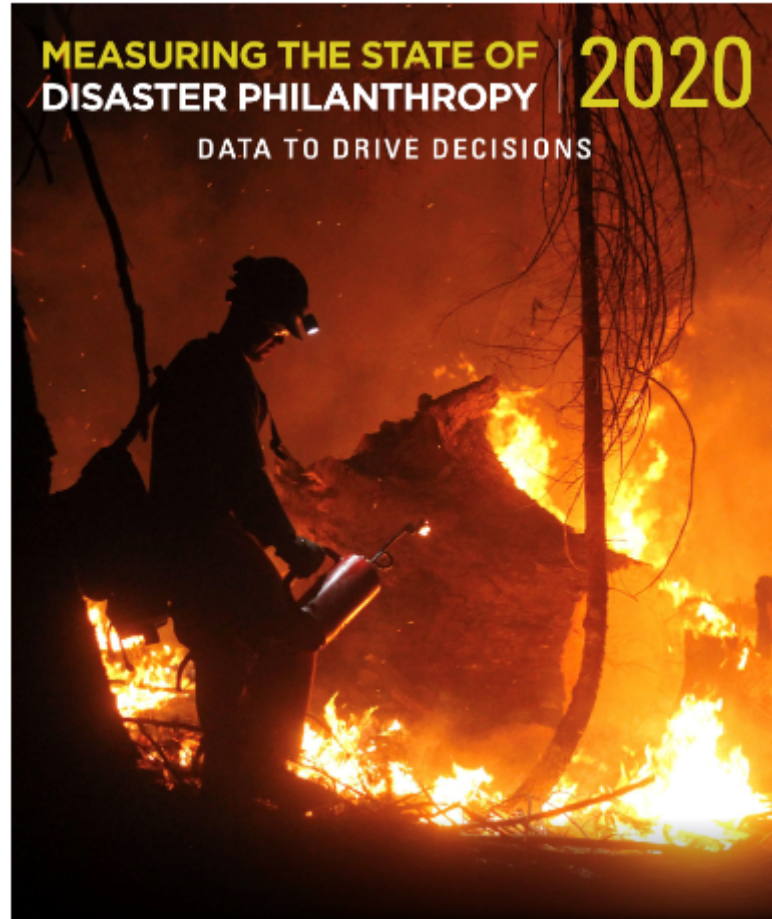
RESPONSE
AND RELIEF



RECONSTRUCTION
AND RECOVERY

2018 Analysis

13



Candid.

CDP Center for Disaster Philanthropy
The voice, vision and power of disaster philanthropy

THE LEON H. AND HARRY E.
HELMSLEY
FOUNDATION



Paradise, California four months after the Camp Fire.
Photo by Brennan Banks, CDP

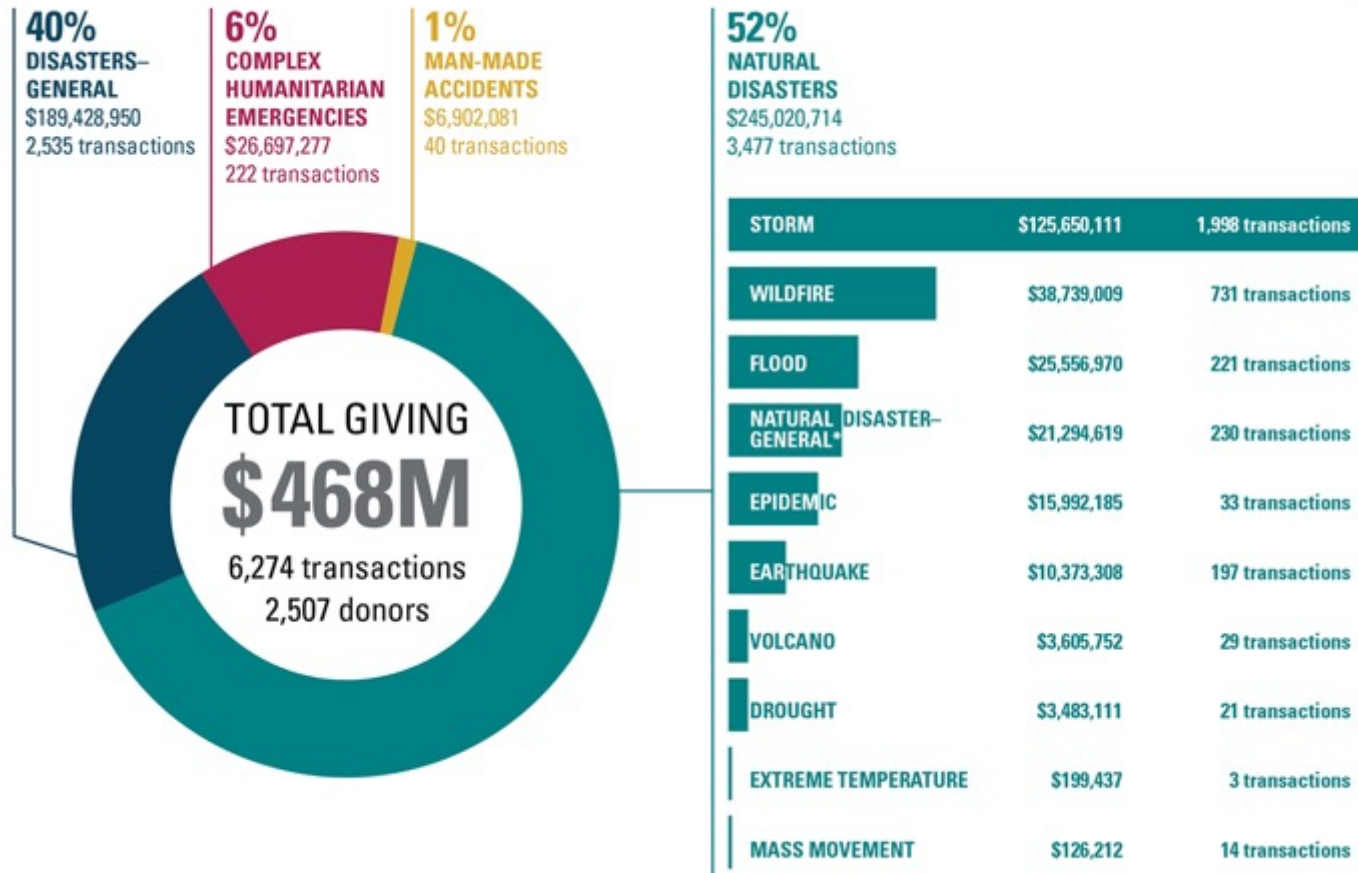


Severe flooding caused by Hurricane Florence.
Photo by Customs and Border Protection

Philanthropic Funding by Disaster Type

14

PHILANTHROPIC FUNDING BY DISASTER TYPE, 2018

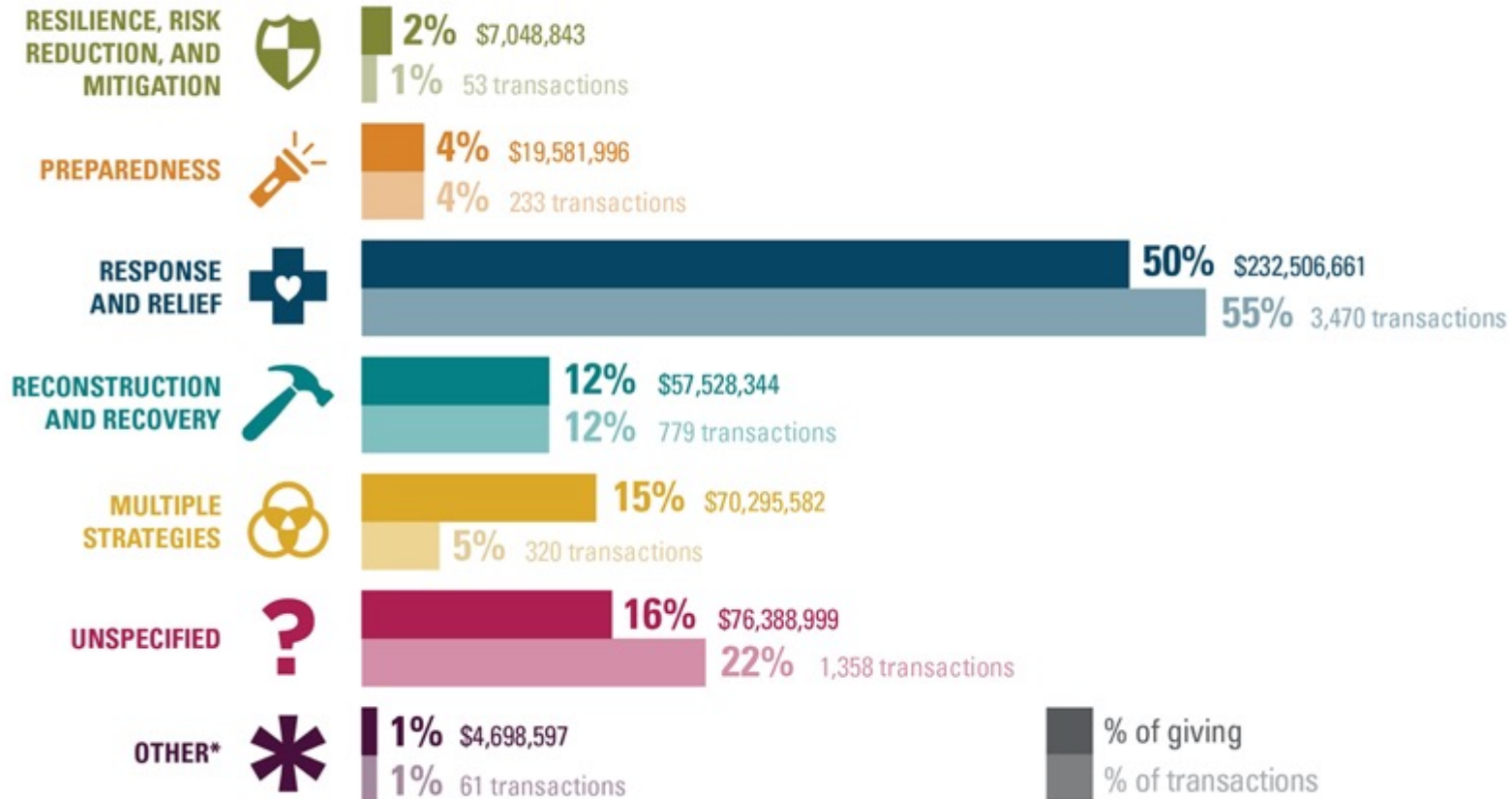


*Includes grants for general or multiple natural disasters

Disaster Assistance Strategy

15

PHILANTHROPIC FUNDING BY DISASTER ASSISTANCE STRATEGY, 2018

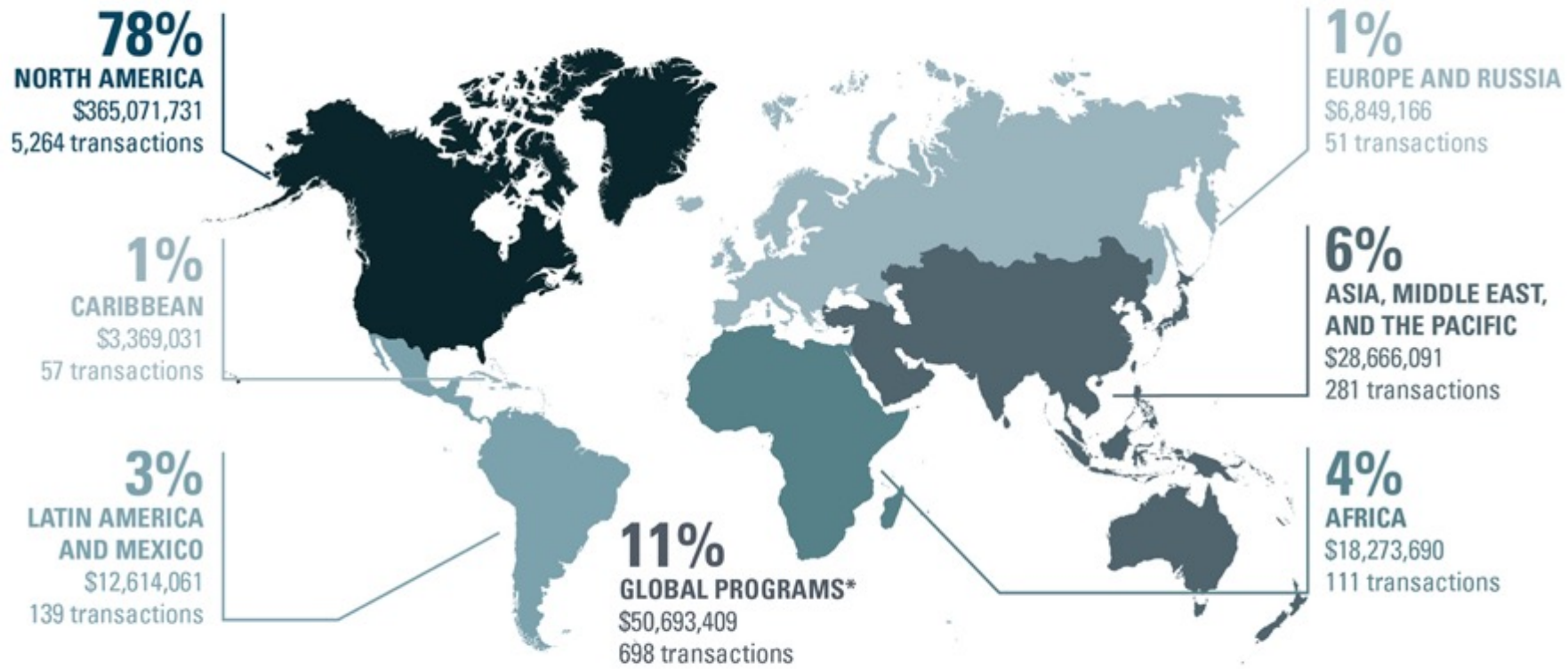


*Other includes grants for research, convenings, and other work that could not be categorized with any other assistance strategy.

Philanthropic Funding for Regions

16

PHILANTHROPIC FUNDING DISTRIBUTIONS BY REGION, 2018



*Funding that is not directed for a specific region but rather provides a global benefit.

Transactions may benefit multiple regions and would therefore be counted more than once. As a result, figures add up to more than 100 percent. North America includes Puerto Rico.

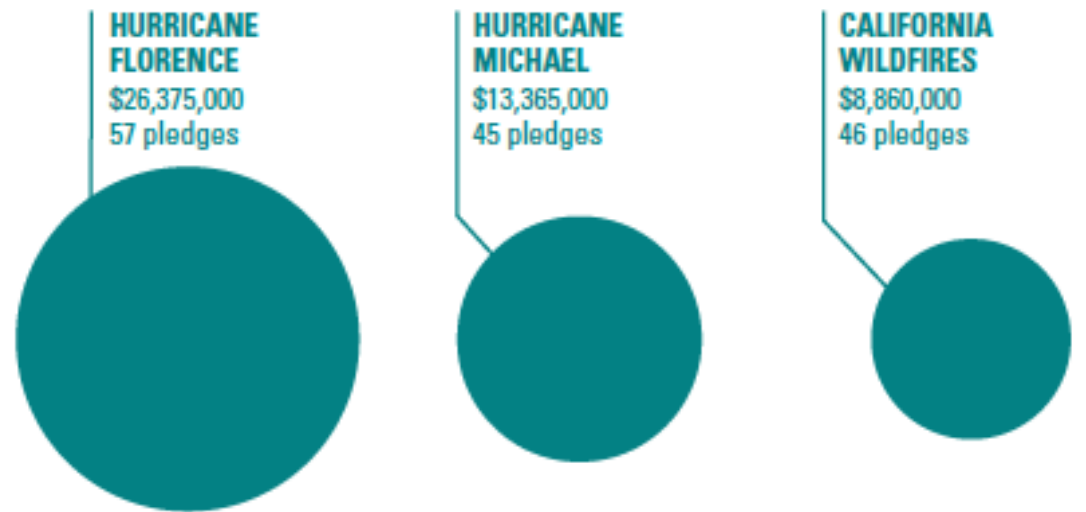
Corporate Giving

17

- Approximately \$206 million based on 2019 Giving in Numbers report by Chief Executives for Corporate Purpose (CECP)

Disaster Giving by Industry, 2018

Health care	\$86,345,000
Financials	\$37,520,000
Consumer discretionary	\$20,003,200
Consumer staples	\$19,421,600
Industrials	\$16,120,000
Technology	\$12,784,200
Energy	\$9,739,200
Utilities	\$3,281,000
Materials	\$772,800



Corporate Giving for specific disasters in 2018

U.S. Household Giving

18

TOP DISASTERS SUPPORTED

% of U.S. Households in 2018

California wildfires	11%
Hurricane Michael	9%
Hurricane Florence	8%
Continued support for 2017 disasters	5%
Africa & Middle East food crisis	4%
Continued support for disasters that occurred prior to 2017	3%

DISASTER GIVING VS. GIVING TO OTHER CAUSES

Among U.S. Households That Made a Charitable Donation in 2018

Gave to non-disaster-related activities only	61%
Gave to both disaster-related and non-disaster-related activities	35%
Gave to disaster aid efforts only	4%

Individual Giving

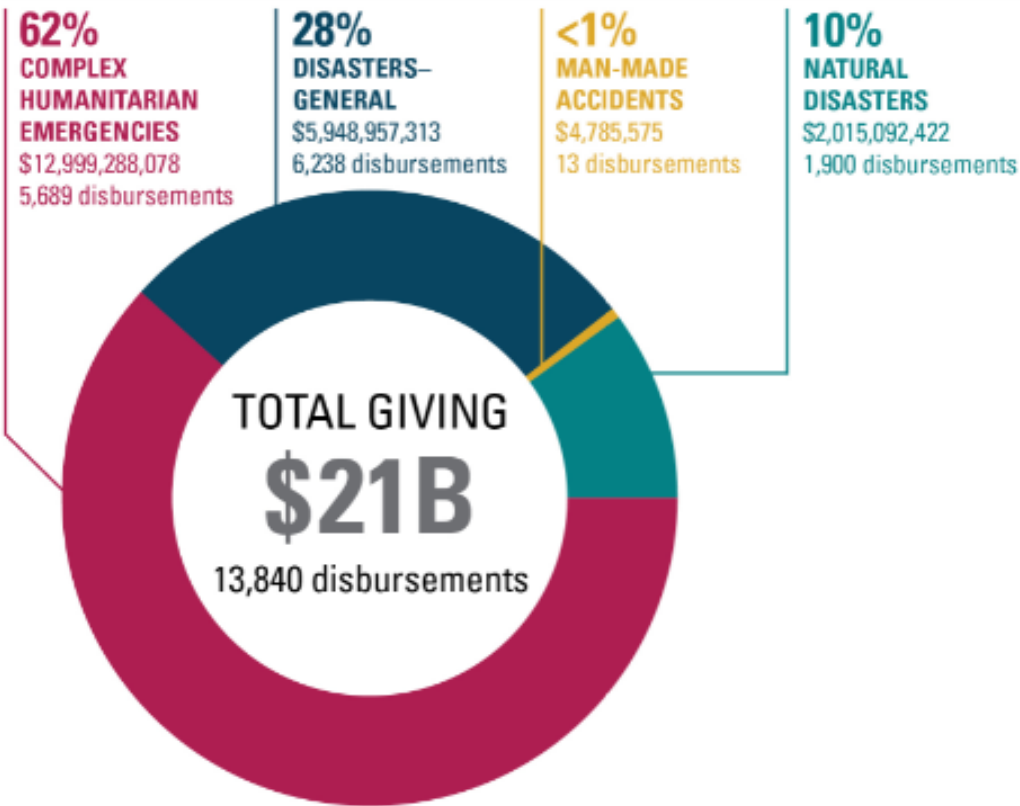
19

PLATFORM	DOLLAR AMOUNT	DISBURSEMENTS/PROJECTS
Network for Good	\$10.3 M	229,620 donations
GlobalGiving	\$9.0 M	276 projects
Fidelity Charitable Donor-Advised Funds	\$25.2 M	7,000 grants
Vanguard Charitable Donor-Advised Funds	\$9.2 M	2,042 grants

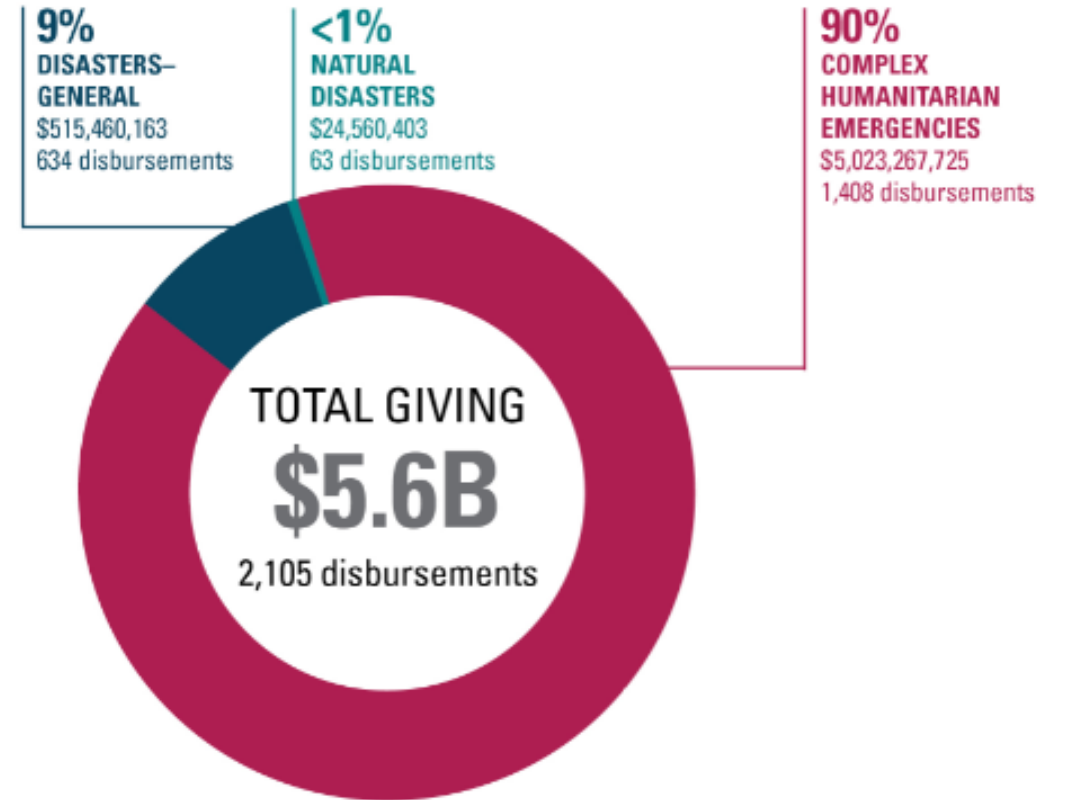
International Government Aid

20

OECD DAC DONORS, 2018



UN OCHA, NON-DAC DONORS, 2018



U.S. Government Aid

21

FEMA, 2018



The top recipient locations were Puerto Rico, Virgin Islands, and California.

STORMS	\$9,005,394,562	17,329 contributions
WILDFIRE	\$1,368,309,790	3,043 contributions
FLOOD	\$623,197,461	4,648 contributions
NATURAL DISASTER—GENERAL*	\$176,121,215	386 contributions
MASS MOVEMENT	\$21,404,272	88 contributions
VOLCANO	\$15,488,229	31 contributions
EARTHQUAKE	\$2,053,080	11 contributions

*Includes grants for general or multiple natural disasters.

Data was accessed in July 2020 from [fema.gov](https://www.fema.gov). FEMA and the federal government cannot vouch for the data or analyses derived from the data after it has been retrieved from the agency's websites.

- HUD: \$34.5 B
- EDA: \$125.6 M

Funding Sources - \$76 billion

22

PHILANTHROPIC FUNDING

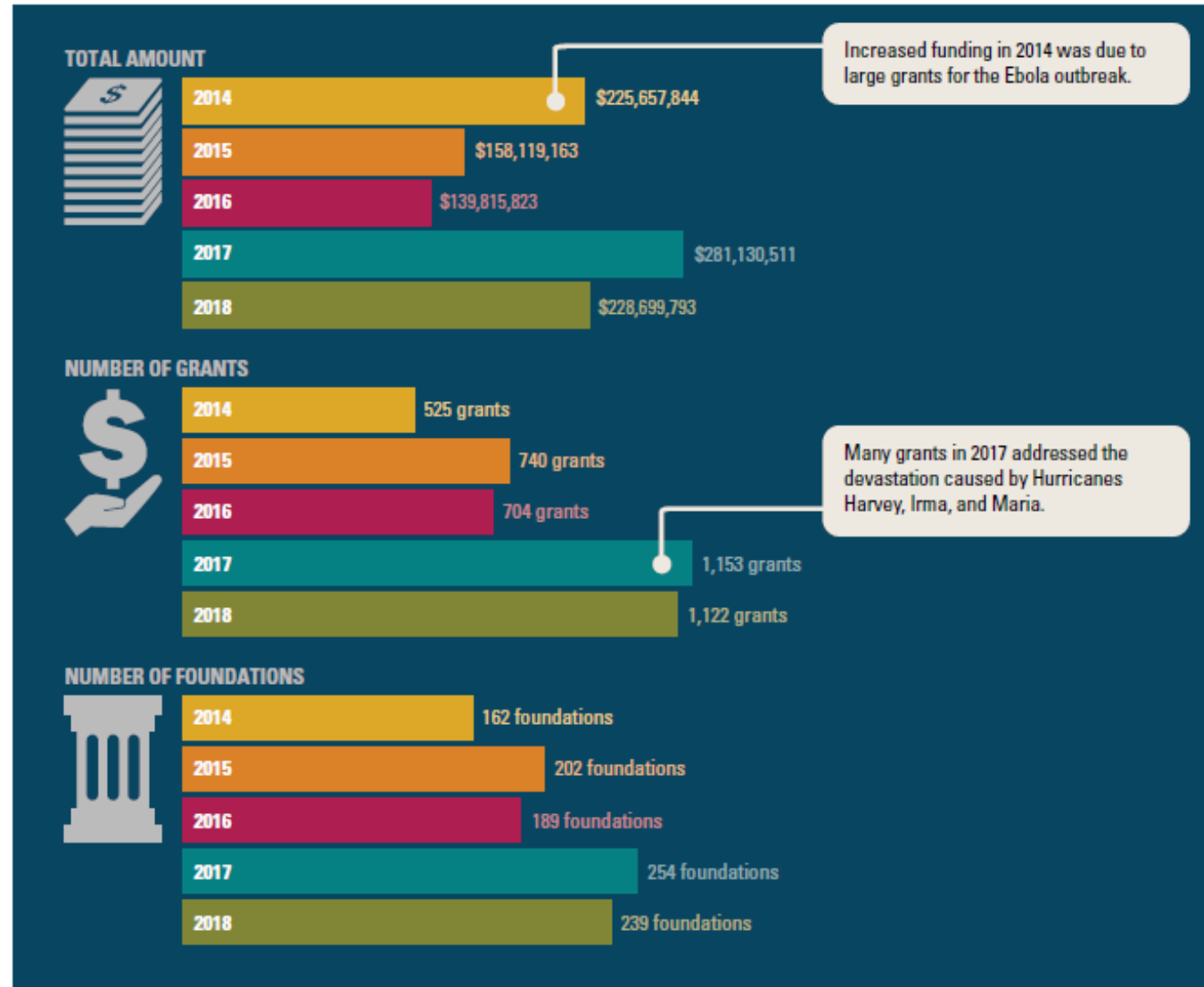
Institutional Philanthropy (U.S. foundations, public charities, non-U.S. donors)	\$468 M
Corporate Giving	\$206 M
Online Giving – Network for Good	\$10.3 M
Online Giving – GlobalGiving	\$9.0 M
Individual Giving – Fidelity Charitable DAFs	\$25.2 M
Individual Giving – Vanguard Charitable DAFs	\$9.2 M
U.S. Households	\$3 B

OTHER FUNDING

OECD: Development Assistance Committee	\$21 B
UN OCHA: Additional Bilateral/ Multilateral Aid	\$1.9 B
FEMA	\$15.6 B
HUD	\$2.7 B
EDA	\$125.6 M

U.S. Foundation Funding Trends, 2014-2018

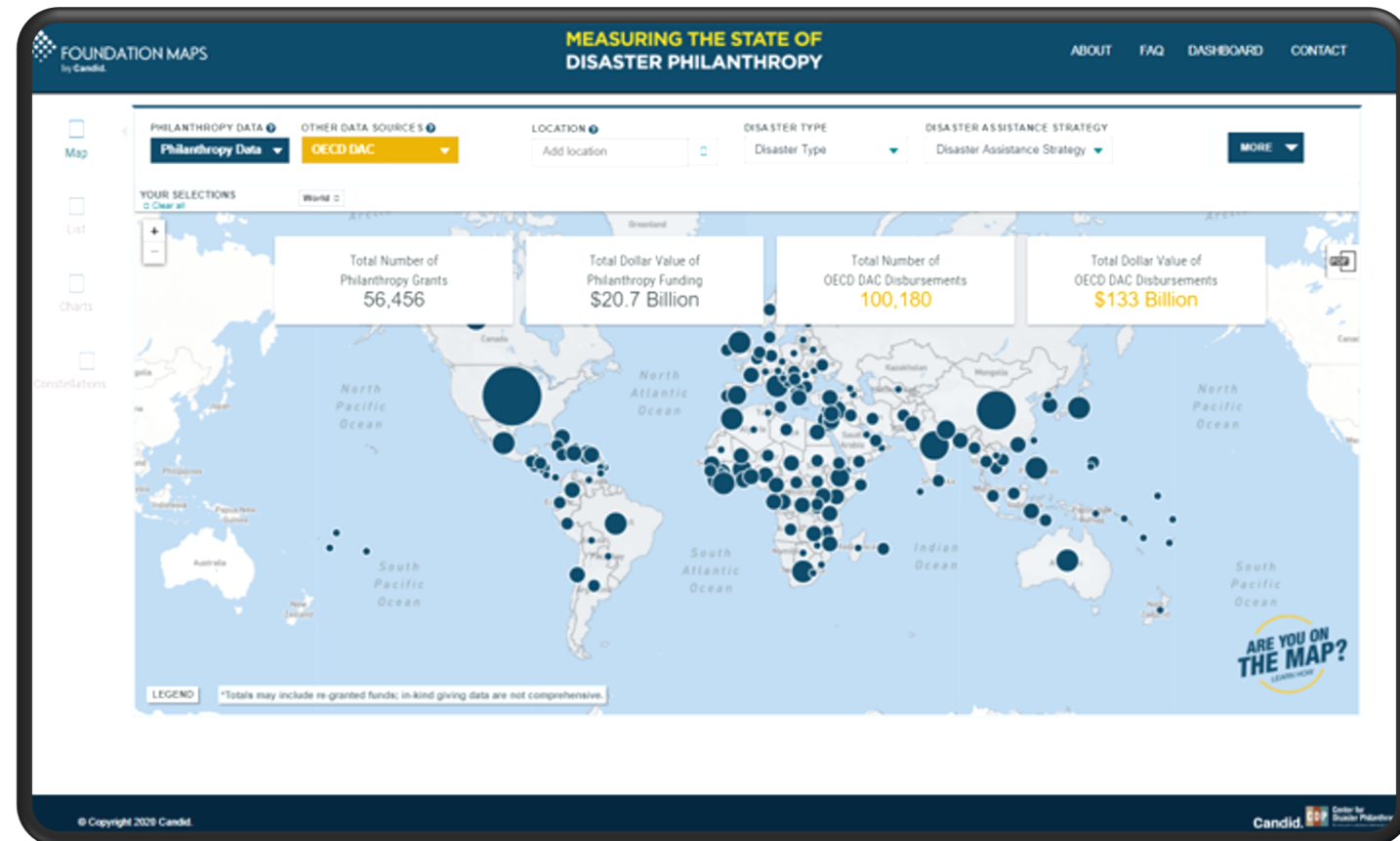
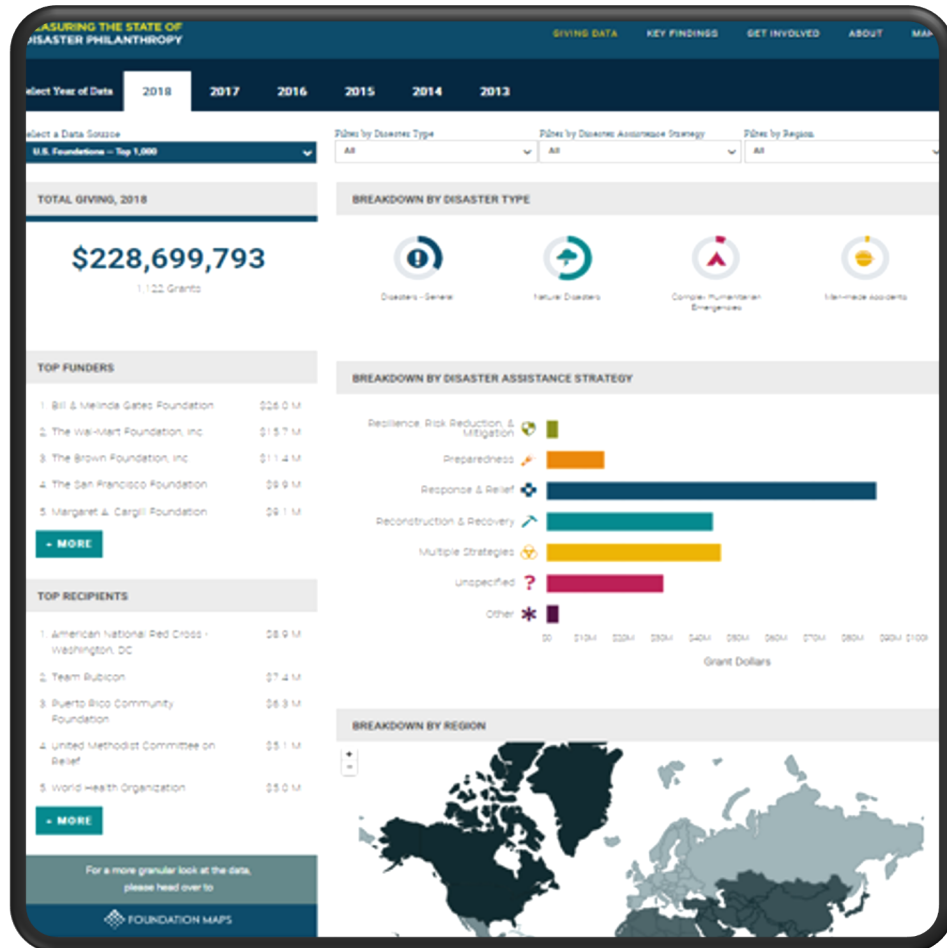
23



Online Tools

24

disasterphilanthropy.candid.org



Land Loss Prevention Projection

25



Savi Horne

Executive Director,
Land Loss Prevention Project



Center for Disaster Philanthropy
The when, where and how of informed disaster giving



About the Land Loss Prevention Project

The Land Loss Prevention Project (LLPP) is a non-profit public interest organization providing comprehensive legal services and technical support to North Carolina's financially distressed and limited resource farmers and landowners seeking to preserve their farms, homes, land and rural livelihoods. The LLPP was founded by the North Carolina Association of Black Lawyers in 1982 and incorporated in 1983.

African American Land Loss

African American land ownership reaching a peak of an estimated 16 to 19 million acres in 1920, according to the U.S. Department of Agriculture. This land was owned by 926,000 African Americans farmers, who constituted 14 percent of all farmers in the United States; that number dropped to fewer than 20,000 farmers owning about 2 million acres by 1997.
<https://naldc.nal.usda.gov/catalog/20698>.

Causes include:

- migration of millions of African Americans from the rural South to industrial cities in the North during the first part of the 20th century;
- discriminatory lending practices by the USDA and other entities; and
- lack of access to legal assistance and formal estate planning and other land transfer practices within African American communities which result in heir property, a form of joint property ownership that occurs when an owner of property dies without a will, or intestate, and their property passes according to state laws of intestate succession.

CDP Advances Mission-Driven Results

- Throughout the pandemic and with the support of the Center for Disaster Philanthropy, the LLPP, classified as an essential business by the state, has remained open, addressing foreclosure, FEMA-related concerns, farm recovery, farm lending difficulties, estate planning, and a range of issues seen in the context of a natural disaster.
- The LLPP achieved its goal of families being able to access legal services to reduce debt, secure real property, manage their transactions with federal and state agencies; preserve assets through will making; and gain greater financial literacy with community education providing a prophylaxis.
- Through individual direct legal intervention, technical assistance, outreach and policy innovation and implementation, the overall outlook for North Carolina's disaster-affected families has been substantially improved. Benefits include increased property retention, removal of barriers to assistance programs, enhanced food access, heightened farm business risk management, and family engagement in multi-generational planning as a safeguard against inherent co-ownership vulnerabilities.

CDP Advances Mission-Driven Results, continued

Addressing the Foreclosure Threat

- During the span of the grant, in credit-related matters threatening homes and farms, the LLPP achieved \$1,148,965 in monetary relief on behalf of clients.
- Over 450 people received foreclosure prevention assistance, with more than 599 receiving new information about disaster-related programming and services through a collaborative effort engaging various providers and resources.
- Wills and estates matters numbered 235.

CDP Advances Mission-Driven Results, continued

Furthering Community Power

The LLPP's robust technical assistance supported farmer groups and farmer networks throughout the state. Springing from the farmer network is a Latinx, woman-based collective farm/gardening effort that is providing produce for their families and their local community. Thus far, they have established multiple growing sites and have initiated a monthly food distribution in partnership with a food bank to address the impact of multiple hurricanes on community members.

CDP Advances Mission-Driven Results, continued

Safeguarding Access to Food

- The LLPP continued its collaborative engagement in county government-based local food initiatives, with participation further intensified, broadened, and made even more critical as the pandemic shapes and reshapes the challenge of achieving food security.
- Issues included ensuring access to farmers markets and multi-tiered operational safety, food distribution to vulnerable adults and children, information access among locales and coordination of regional responses, farmer engagement and agency in creating new processes, and financial support for the farm businesses themselves as producers negotiate additional challenges within the distressed economy to connect families to nutrition.

CDP Advances Mission-Driven Results, continued

Advancing Equity

- The LLPP has employed strategic collaborative strategies to ensure that Farm Bill implementation goes forward to set up a relending program at the appropriation authorized in 2018. The Farm Bill authorizes the Farm Service Agency to loan funds to qualified intermediaries to relend to individuals and entities seeking to resolve heir property issues and obtain clear title to farmland.
- In addition, the LLPP engaged in collaborative information sharing regarding the need to ensure that USDA's 2501 program for socially disadvantaged producers is fully funded.
- The LLPP also collaborates to provide information concerning the CARES Act and farmer inclusion and impact in the hurricane belt.

Pursuing a Path Forward

Needs:

- Further Implementation and Funding of Key Agricultural Programs
- Ongoing Support for Heir Property Owners
- Legal Reform (example: Uniform Partition of Heirs Property Act)
- Undergirding of Environmental Stewardship
- Interrogation of Land's Repurposing
- Uplifting “Farmer-centric” Solutions to Advance Food Security, Generational Wealth Building, and Sustainable Communities



Thank you.

Land Loss Prevention Project

919-682-5969

1-800-672-5839

P.O. Box 179

Durham, NC 27702

www.landloss.org

North Valley Community Foundation

35



David Little

Executive Vice President, Programs &
Communications,
North Valley Community Foundation



Center for Disaster Philanthropy
The when, where and how of informed disaster giving







Get Involved

39

- Improve currency, quality and quantity of data:
 - ▣ Foundations and corporate donors can share their data directly.
 - ▣ More precise grant descriptions, particularly around assistance strategy.
- Contact Supriya Kumar, supriya.kumar@candid.org, if you would like to add your data.

Candid.



Center for Disaster Philanthropy
The when, where and how of informed disaster giving

Phases of Disaster Giving

40

As a sector, we need to move our funding from being Reactive (response and relief) to being strategic (preparedness, resilience, risk reduction and mitigation and reconstruction and recovery).



Q & A

41

- Submit questions using the Q & A box at the bottom of your screen.
- Use **#SODP2020** or **#CDP4Recovery** to tweet insights.



Supriya Kumar
Global Partnerships Research
Manager,
Candid



Savi Horne
Executive Director,
Land Loss Prevention Project

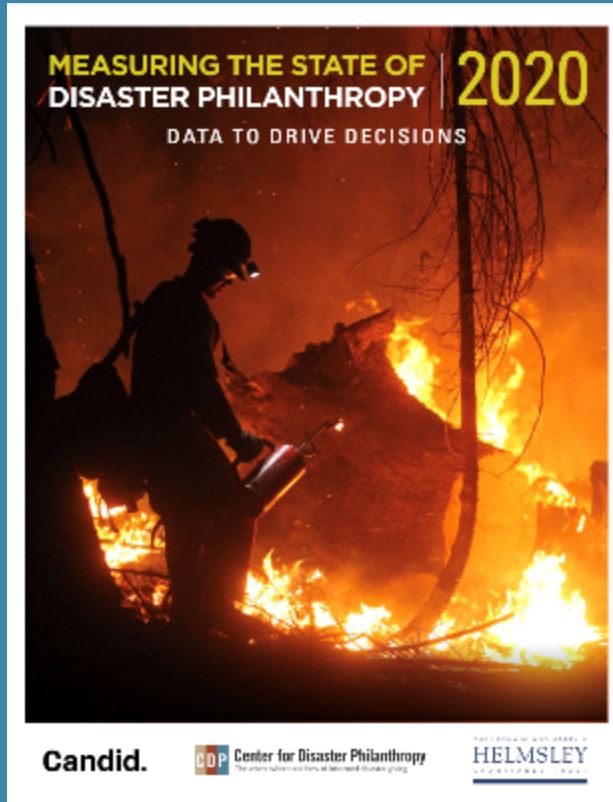


David Little
Executive Vice President,
Programs &
Communications,
*North Valley Community
Foundation*

Candid.



Center for Disaster Philanthropy
The when, where and how of informed disaster giving



disasterphilanthropy.candid.org

For additional information, contact:

Tanya Gulliver-Garcia

Tanya.Gulliver-Garcia@disasterphilanthropy.org

Candid.



Center for Disaster Philanthropy
The when, where and how of informed disaster giving