

# COVID-19 Philanthropy: Measuring One Year of Giving

*March 11, 2021*



**Center for Disaster Philanthropy**

The when, where and how of informed disaster giving

# Moderator

2



**Sally Ray**

Director of Strategic Initiatives,  
*Center for Disaster Philanthropy*

# Thank You to Our Funder & Co-Sponsors

3

This webinar is presented in conjunction with:

**Candid.**

And is co-sponsored by:



# How to Participate

4

- Look for webinar recording and summary at [disasterphilanthropy.org](https://disasterphilanthropy.org).
- Submit questions using Q & A box at the bottom of your screen.
- Use **#CDP4Recovery** to tweet along during the webinar.

## Land Acknowledgement

“Acknowledgment is a simple, powerful way of showing respect and a step toward correcting the stories and practices that erase Indigenous people’s history and culture and toward inviting and honoring the truth.”

<https://usdac.us/nativeland>

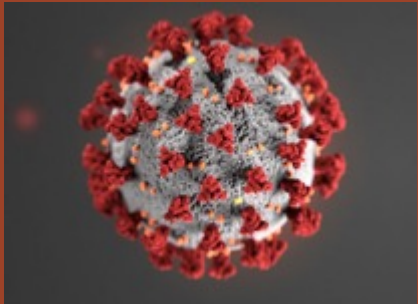


**Center for Disaster Philanthropy**  
The when, where and how of informed disaster giving

# Webinar Overview

6

## Agenda



### **Philanthropy & COVID-19: Measuring one year of giving**

- ❑ Broader context of COVID-19
- ❑ CDP's work on COVID
- ❑ Hear the data on the report
- ❑ Response to the report
- ❑ Direction to philanthropy



**Center for Disaster Philanthropy**  
The when, where and how of informed disaster giving

# 2020 COVID-19 By The Numbers

7

- Worldwide total cases: 118,776,703
- Worldwide deaths: 2,634,501
- Worldwide recoveries: 94,343,438
  
- U.S. total cases: 29,862,803
- U.S. deaths: 542,210
- U.S. recoveries: 20,640,270
- U.S. per capita: 9.13/100 people



*Source: Action Against Hunger, Fardosa Hussein*



**Center for Disaster Philanthropy**  
The when, where and how of informed disaster giving

# COVID-19 Challenges

8

- ❑ U.S. represents only 4% of the world population and yet 25% of the world's COVID cases and 21% of the deaths.
- ❑ **Black, Indigenous and People of Color (BIPOC)** communities across the U.S. have faced higher rates of infection and deaths, and lower rates of access to vaccination.
- ❑ **Food Insecurity:**
  - ❑ U.S. 35 million people to 54 million
  - ❑ U.S.: Children 11 million to 18 million
  - ❑ Globally: 149 million people to 272 million
  - ❑ 20% increase in food prices



**Center for Disaster Philanthropy**  
The when, where and how of informed disaster giving



# Root Causes

9



# CDP's COVID-19 Response Fund

10



As of the end of January 2021:

- ❑ **\$21.8 million**
- ❑ **137 grantees**
- ❑ **144 grants**



**Center for Disaster Philanthropy**  
The when, where and how of informed disaster giving

# Speakers

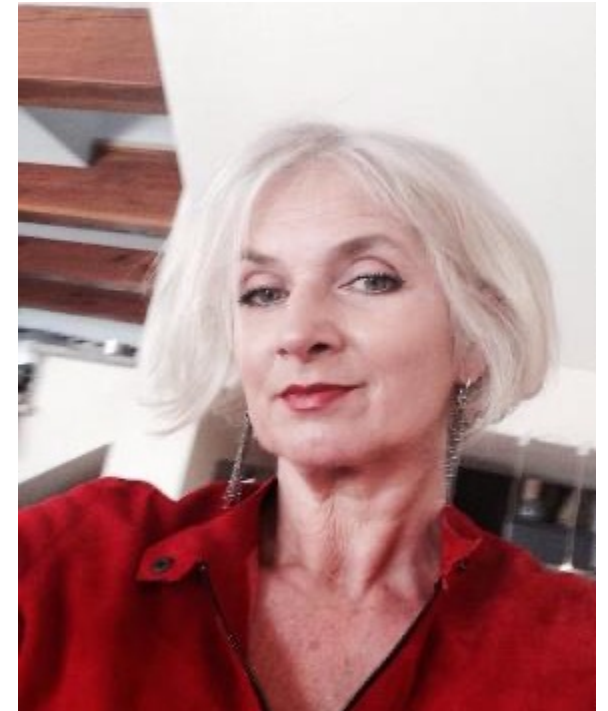
11



**Grace Sato**  
Director of Research  
*Candid.*



**Dr. David Maurrasse**  
Founder and President  
*Marga Incorporated*



**Clare Woodcraft**  
Executive Director  
*Centre for Strategic Philanthropy*



**Center for Disaster Philanthropy**  
The when, where and how of informed disaster giving



12

## Grace Sato, Director of Research



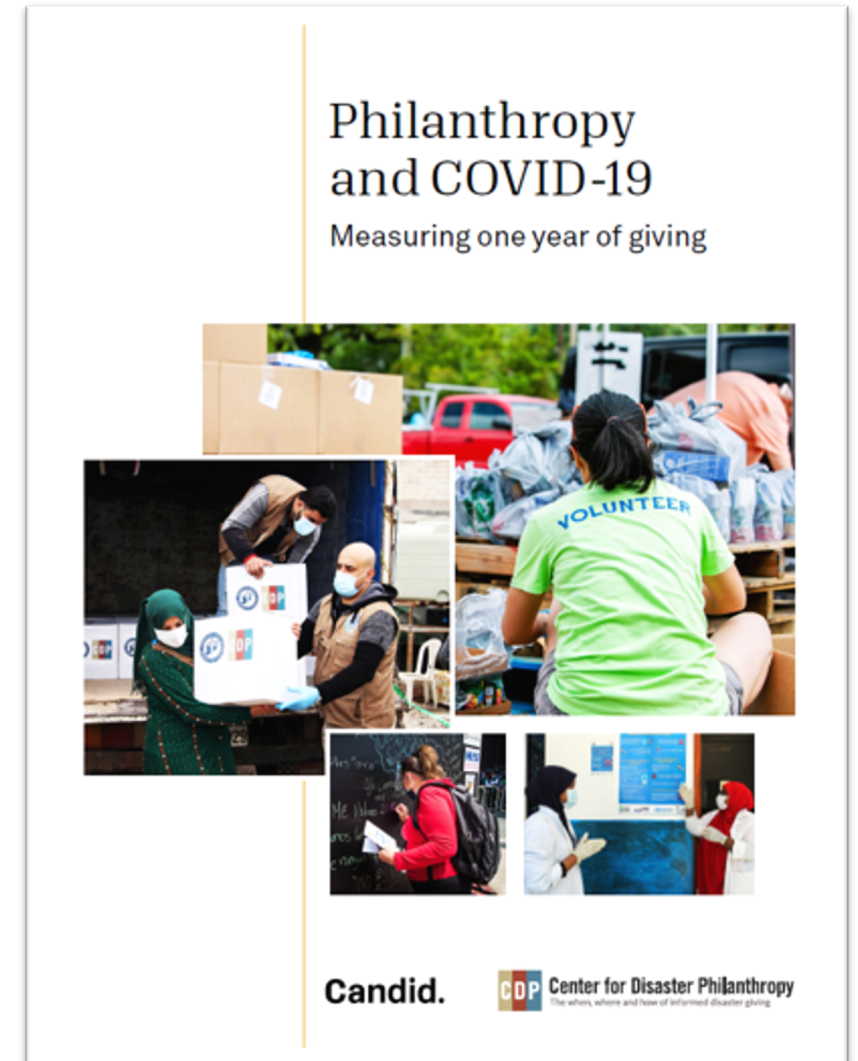
# Candid.



**Center for Disaster Philanthropy**  
The when, where and how of informed disaster giving

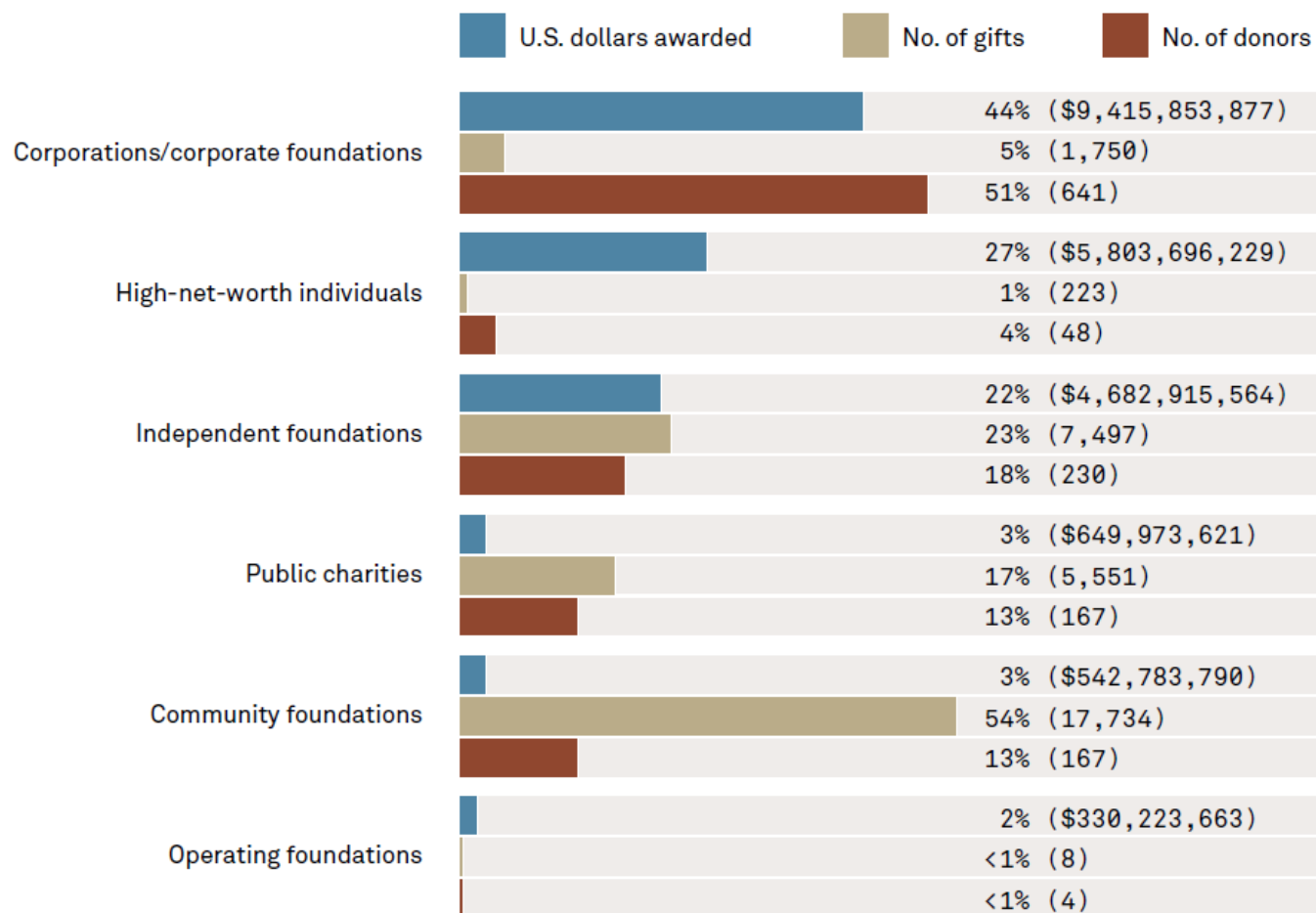
# About the data

- Collected by Candid as of January 20, 2021
  - We are still collecting data
- From news sources (in English), websites, direct reporting from funders
- Includes pledges and grants
- 63% of dollars went to unknown/multiple recipients



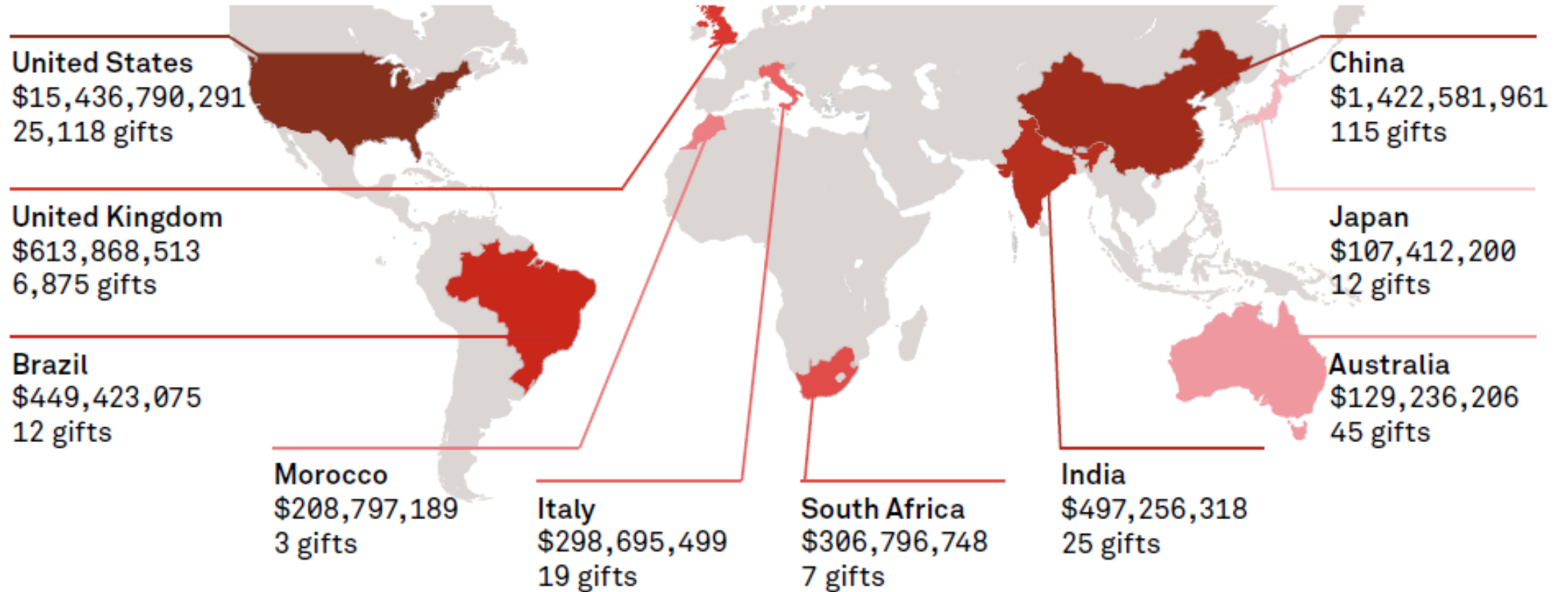
# We tracked \$20.2 billion for COVID-19

## Funding by donor type



- 44% of dollars came from corporations
- 54% of grants awarded by community foundations
- MacKenzie Scott accounted for 20%

# Global COVID-19 funding (with caveats)



# Changes from the first half of 2020

## Types of organizations that received funding

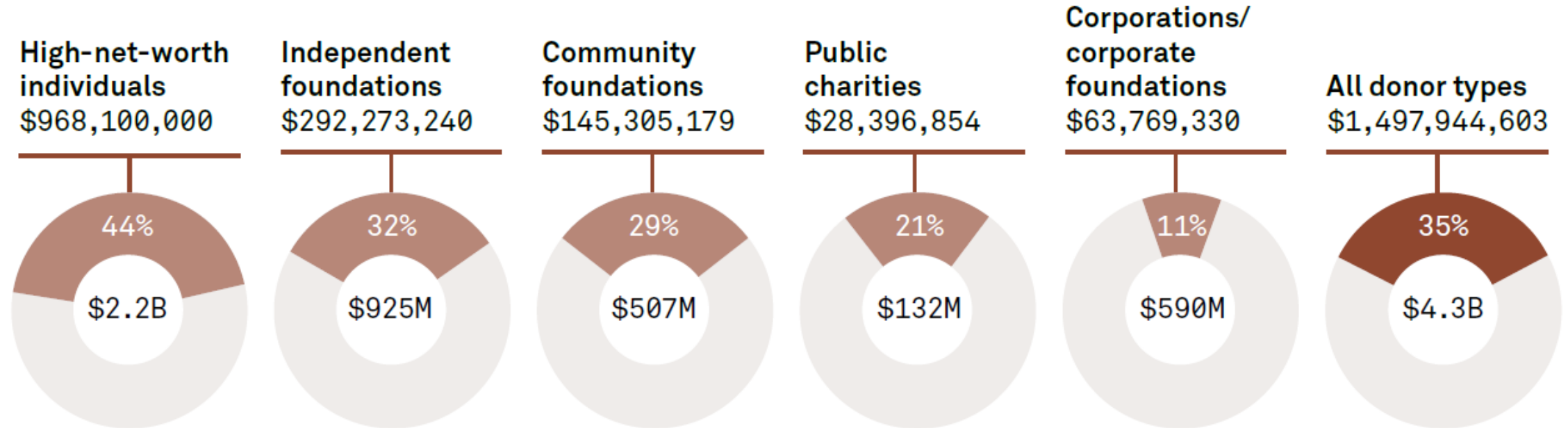
- Human services 28%
- Health 26%
- Education 20%



General support/flexible funding 39%



# 35% of US COVID-19 funding was designated for BIPOC communities

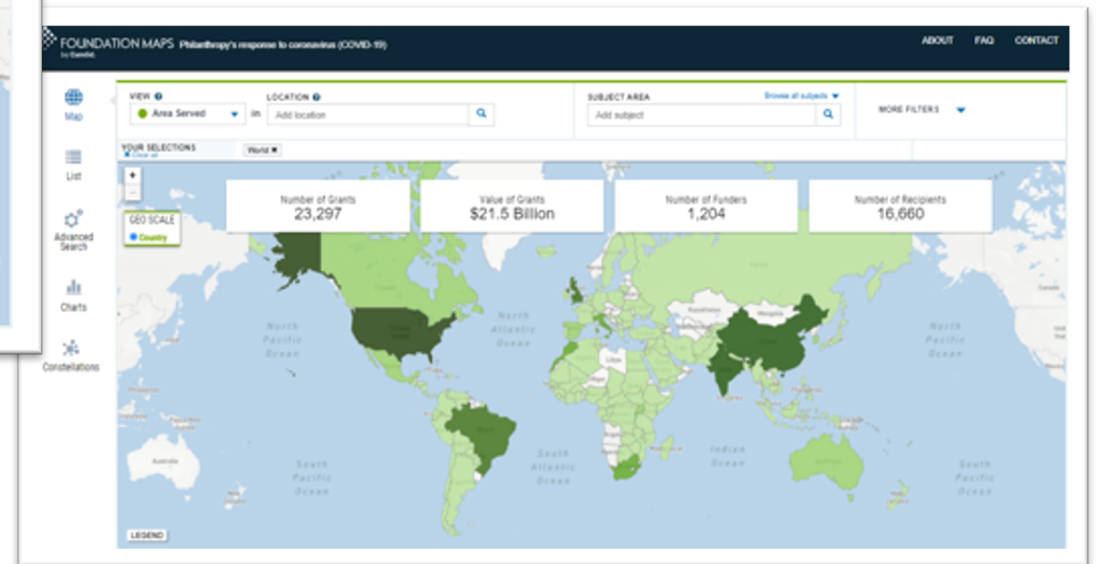


# Explore the data yourself

disasterphilanthropy.candid.org



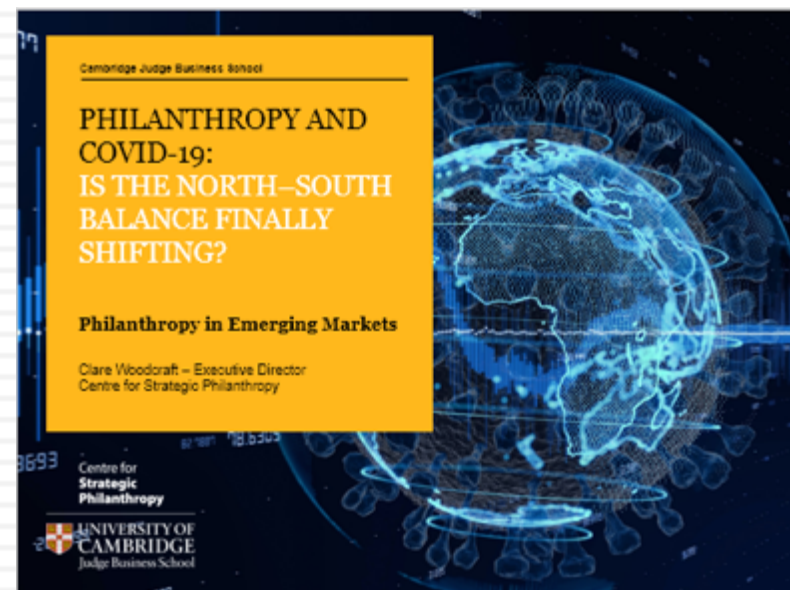
[candid.org/coronavirus](https://candid.org/coronavirus)



19

## Clare Woodcraft

*Centre for Strategic Philanthropy*



**Center for Disaster Philanthropy**  
The when, where and how of informed disaster giving

# COVID-19 and Power Balance

20

## □ Why the power balance matters

- ▣ Defines the parameters of best practice
- ▣ Contribute to institutional norms/voids
- ▣ Limits the input of local knowledge and expertise

## □ How COVID19 has shifted the power balance

- ▣ More flexibility and pragmatism
- ▣ More digitization, innovation and local data
- ▣ More networks, peer-peer learning and solidarity

Centre for  
**Strategic  
Philanthropy**



# Systems Change and Positive Impact

21

## □ How this can translate into sustained system change

- ▣ Fund **Networks** to improve infrastructure
- ▣ Build Global South Government-Philanthropy **Partnerships**
- ▣ Improve resilience through **Core Funding**

## □ With potentially positive outcomes for impact

- ▣ Greater diversity and inclusion
- ▣ Flatter hierarchies and broader ecosystems
- ▣ Stronger resilience and reduced dependency

22

**Dr. David Maurrasse**

Founder and President, *Marga Incorporated*



**Center for Disaster Philanthropy**  
The when, where and how of informed disaster giving

## Reaction to *Philanthropy and COVID-19 Year 1*

- The overall high volume of giving is not surprising given the extent of the pandemic as a disaster – transcending boundaries – a super disaster
- This is a global pandemic, yet it is experienced in places – a charge for community foundations and the development of local funds
- The increased flexibility of funding is intriguing – a discussion underway over recent years, but it took a pandemic to accelerate change – agree with recommendation to increase flexibility and general support
- The pandemic and our racial reckoning are intertwined – both highlight the persistence and extent of systemic racism – agree with recommendation for targeted giving for BIPOC/communities most adversely impacted
- Agree with report's recommendation on data. This is a continuous challenge.

*David Maurrasse, Founder & President*



# What are the ways in which funders can enable capacity to have a long-term impact in the future? [Examples of better efficiencies and collaborations among funders AND organizations?]

- The pandemic created immediate needs for relief – as report indicated – support for human services, funder rapid response, etc. But less for community and economic development or systems change
  - Fund organizations and initiatives designed for long term transformation at the community level and in policy
- Foundations alone cannot solve the breadth of challenge displayed by the pandemic – it is a multi-institutional challenge (government, universities, hospitals, and more)
  - Support and participate in strategic community partnerships (COVID funds may have laid some groundwork for collaboration)
- Explore *community driven philanthropy* – direct engagement with community-based constituents
  - Even beyond participatory grantmaking – comprehensive engagement on strategy
- Put communities and governance at the center; build on existing experience and solutions (what is known to work)
  - To focus funding, must practice priority-setting, maximize existing opportunities, and identify gaps

David Maurrasse, Founder & President





# Opportunities for philanthropy to reevaluate contributions it can make, in terms of immediate relief and longer-term recovery and reimagination:

- Target root causes and collective policy actions – The pandemic has underscored the reality of social determinants of health, economic inequities, educational disparities, unaffordable housing causing vulnerability for marginalized populations
- Acknowledge and challenge systemic racism and bring a racial equity lens
- The pandemic highlighted gender inequity – need more targeted funding for women and girls
- Treat disaster response as relief to recovery to re-imagination – depart from relief only approaches
- Emphasize community resiliency – strengthen capacity of CBOs, expand health infrastructure and preparedness for future pandemics/ emergency response
- Avoid going it alone – collaborate across foundations, but identify unique opportunities to contribute to cross sector collaboration (e.g. community foundations can be valuable conveners)

*David Maurrasse, Founder & President*



# Q and A

26

- Submit questions using the Q & A box at the bottom of your screen.
- Use **#CDP4Recovery** to tweet insights.



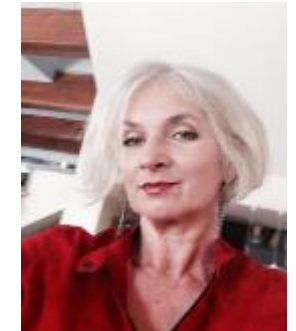
**Sally Ray**  
Director of Strategic  
Initiatives,  
*CDP*



**Grace Sato**  
Director of Research  
*Candid.*



**Dr. David Maurrasse**  
Founder and President  
*Marga Incorporated*



**Clare Woodcraft**  
Executive Director  
*Centre for Strategic Philanthropy*



**Center for Disaster Philanthropy**  
The when, where and how of informed disaster giving

# Key Takeaways

27

- ❑ Black, Indigenous and People of Color communities must be prioritized.
- ❑ This work cannot be done in isolation and root causes need to be addressed.
- ❑ Localization and prioritizing community knowledge is critical.
- ❑ Philanthropy needs to share power with grantees and communities.
- ❑ Funders should continue to fund unrestricted, flexible and large grants to enable recovery.

# CDP Resources

28

- ❑ CDP has a [California Wildfires Recovery Fund](#), [Atlantic Hurricane Season Recovery Fund](#), [Global Disaster Recovery Fund](#), [Disaster Recovery Fund](#) and [COVID-19 Response Fund](#).
- ❑ Detailed [Issue Insights](#).
- ❑ Regularly updated [Disaster Profiles](#).
- ❑ For more information, visit [www.disasterphilanthropy.org](http://www.disasterphilanthropy.org).



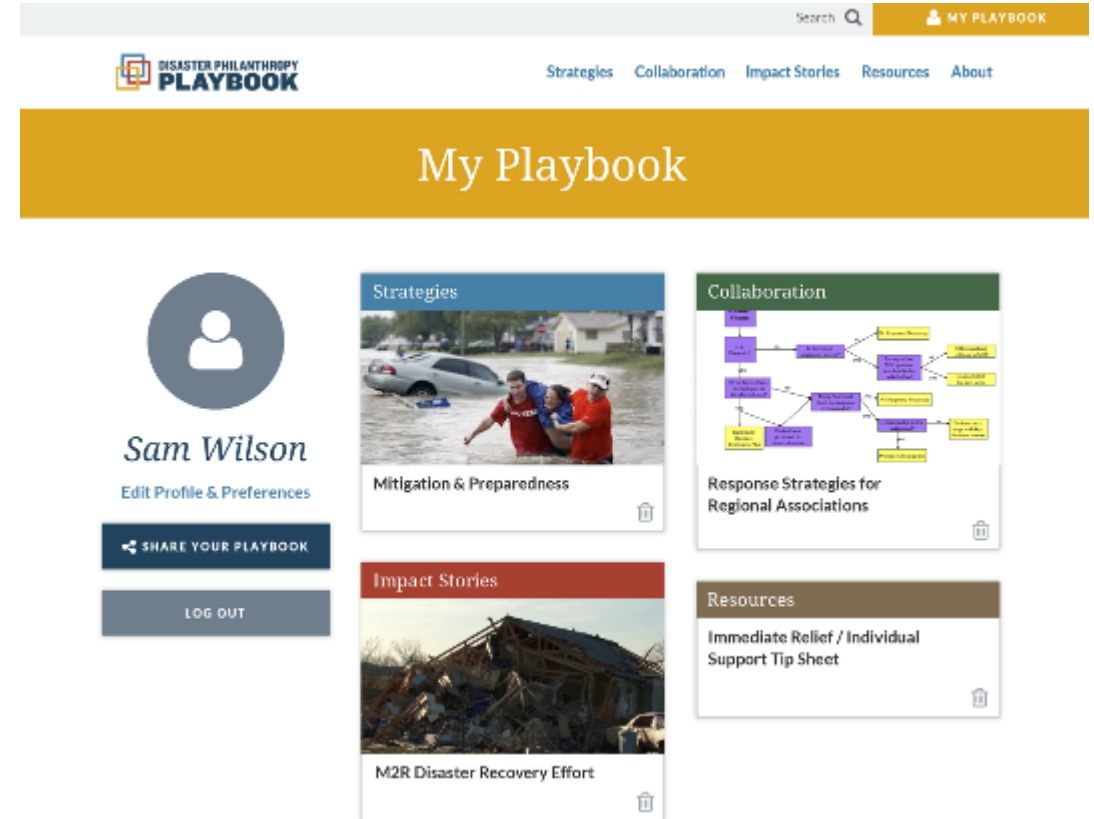
**Center for Disaster Philanthropy**  
The when, where and how of informed disaster giving



# DISASTER PHILANTHROPY PLAYBOOK

29

- The Disaster Playbook has a number of toolkits and resources to guide the philanthropic community in responding to future disasters.
- Learn more at [www.disasterplaybook.org](http://www.disasterplaybook.org)



**Center for Disaster Philanthropy**  
The when, where and how of informed disaster giving

# Questions?

For additional information, contact:

**Tanya Gulliver-Garcia**

*Director of Learning and Partnerships*

[Tanya.Gulliver-Garcia@disasterphilanthropy.org](mailto:Tanya.Gulliver-Garcia@disasterphilanthropy.org)



**Center for Disaster Philanthropy**

The when, where and how of informed disaster giving