

ANNUAL IMPACT

REPORT 2020



Center for Disaster Philanthropy
The when, where and how of informed disaster giving



WE KNOW
DISASTERS,
SO YOU DON'T
HAVE TO.

A PANDEMIC, HURRICANES, WILDFIRES, FLOODS AND HUMAN-MADE CRISES ARE THREATENING THE LIVES AND LIVELIHOODS OF BILLIONS WORLDWIDE. The increasing frequency and intensity of disasters create a critical need for knowing when to respond and how to do so effectively.

IMAGINE A WORLD
WHERE PEOPLE
CAN REBUILD,
RECOVER FROM
AND WITHSTAND
FUTURE DISASTERS.

WE TAKE OUT THE GUESSWORK BY HELPING DONORS FULLY LEVERAGE PHILANTHROPY to strengthen communities' ability to withstand disasters and recover when they occur.

BACKGROUND: PHOTO BY STAFF SGT. JOSIAH PUGH, LOUISIANA NATIONAL GUARD

LEFT: PHOTO COURTESY OF SYRIAN AMERICAN MEDICAL SOCIETY

TABLE OF CONTENTS

SPECIAL MESSAGE FROM LORI BERTMAN, BOARD CHAIR	4
SPECIAL MESSAGE FROM PATRICIA McILREAVY, PRESIDENT AND CEO	5
2020: AT A GLANCE.....	6
RESOURCE STEWARDSHIP	8
CDP COVID-19 Response Fund.....	8
CDP U.S. Wildfires Recovery Funds.....	10
CDP Atlantic Hurricane Season Recovery Fund.....	12
CDP Global Recovery Fund.....	14
CDP Disaster Recovery Fund	16
Midwest Early Recovery Fund.....	17
EDUCATIONAL RESOURCES.....	18
DIVERSITY, EQUITY AND INCLUSION (DEI)	19
PARTNERSHIPS	19
THANK YOU TO OUR LOYAL DONORS	20
FINANCIALS	21
ABOUT THE CDP.....	22
BOARD OF DIRECTORS AND STAFF	23



A SPECIAL MESSAGE FROM **LORI BERTMAN** BOARD CHAIR

AFTER THE DEVASTATION AND TRAGEDY FROM HURRICANE KATRINA, THE CENTER FOR DISASTER PHILANTHROPY (CDP) CO-FOUNDERS ERIC KESSLER, REGINE WEBSTER AND I BELIEVED THAT PHILANTHROPY COULD PLAY A SMALL BUT MIGHTY ROLE IF DIRECTED STRATEGICALLY AND FLEXIBLY THROUGHOUT THE ENTIRE DISASTER CYCLE, INCLUDING RECOVERY.

We saw the need for an organization dedicated to assisting funders to become the disaster grantmakers they needed to be to meet their core missions amid disasters and climate crises. Most importantly, we understood the need to focus on the underserved disproportionately affected by disasters because of systemic marginalization.

In 2020, the organization created from that shared vision – CDP – celebrated 10 years of proven leadership in guiding domestic and international funders and communities confronting hurricanes, wildfires, pandemics, complex humanitarian emergencies and other crises.

CDP has come a long way since it responded to Hurricanes Isaac and Sandy, two of the first large-scale domestic disasters after its founding. Since then, it has given more than \$60 million in grants, grown its talented staff to 17 team members and brought on a new CEO to take us to the next level.

The increasing ferocity of disasters of the last decade has reinforced my belief that all philanthropists should have a giving strategy for times of crises. As the pandemic and the increasing intensity of disasters from natural hazards have shown, the need will arise. And your local communities will thank you for being a partner in their preparedness and recovery.

I am proud of all that CDP has accomplished over the past 10 years. Looking back on 2020, I find it truly remarkable to see the echoes of our original concept present throughout the seamless execution of the mission by the team. As a founder, outgoing board chairperson and disaster philanthropist, I am grateful to the entire CDP team, its community partners and donors for all they have done and all they have yet to do. And I look forward to continuing my work with CDP as the incoming board chair emeritus.

The increasing ferocity of disasters of the last decade has reinforced my belief that all philanthropists should have a giving strategy for times of crises. As the pandemic and the increasing intensity of disasters from natural hazards have shown, the need will arise. And your local communities will thank you for being a partner in their preparedness and recovery.



A SPECIAL MESSAGE FROM PATRICIA McILREAVY PRESIDENT AND CEO

2020 WAS A YEAR THAT FELT LIKE A DECADE.
A HARBINGER OF WHAT MAY COME AS CLIMATE
CHANGE, SOCIAL UPHEAVALS, GLOBAL INEQUALITIES
AND POVERTY CONTINUE TO STRAIN THE SOCIO-
ECONOMIC FABRIC OF HUMANITY.

2020 was also a year of awakening. Records broke as philanthropy led the way with billions of dollars in donations, as cities and towns in the U.S. and abroad hosted marches for social justice and big pharma became public health champions.

For the Center for Disaster Philanthropy (CDP), it was a year when our mission — leveraging the power of philanthropy to strengthen the ability of communities to withstand disasters and recover equitably — came into its own. With the introduction of a new three-year strategy and leadership changes during a pandemic, CDP could have faltered in our efforts. Instead, the team leaned in, showing leadership and vision across our multiple work areas.

Steadfast in our commitment to communities affected by disasters, CDP staff informed and guided philanthropy as multiple crises struck. We developed streamlined systems to further our effectiveness as a donor to grantee partners. We were agile and innovative in our grantmaking, striving to get funds as local as possible. We were a vocal champion, highlighting needs and proposing solutions.

Throughout 2020, we broke some records of our own. We disbursed 193 grants to 176 organizations working in 50 countries. We supported a diversity of needs — aiding people recovering from wildfires, hurricanes, floods, the pandemic, a rare derecho, forced population movements and beyond. We received funding from new sources, including a single donation of \$10 million. We challenged ourselves to be the change we wished to see.

We listened to grantee partners, following their lead on what recovery looked like for them and how our funds would be of best use. From the expected — the provision of PPE and school supplies — to the unexpected — census support and small business bridge loans, our grantee partners delivered for their communities.

In recognition of our efforts, magazines, newspapers and **CNN Heroes: An All-Stars Tribute** recommended CDP as a charity to support.

As we look into 2021 and what it may bring, CDP is thankful for the incredible generosity of our donors, the partnership of our grantees and the collaborations of our clients. We take into the future our learning that even in the darkest of times, humanity calls on us to continue to care deeply and provide hope to communities in times of disaster.

As we look into 2021 and what it may bring, CDP is thankful for the incredible generosity of our donors, the partnership of our grantees and the collaborations of our clients. We take into the future our learning that even in the darkest of times, humanity calls on us to continue to care deeply and provide hope to communities in times of disaster.

2020 AT A GLANCE

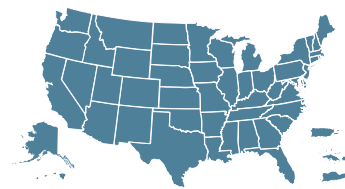
We provide expert advice and resources while also managing domestic and international disaster funds on behalf of corporations, foundations and individuals through targeted, holistic and localized grantmaking to strengthen communities' ability to withstand disasters and equitably recover when they occur. With our focus on medium- and long-term recovery, the life cycle of a philanthropic investment in CDP's efforts can be anywhere from six months to three years, as we ensure that the gift has the greatest impact at the time it is most needed.

OUR FUNDS

\$50.1M
RAISED

\$29.9M
AWARDED

173
ORGANIZATIONS
SUPPORTED



ACROSS THE U.S.
Plus D.C., Puerto Rico, U.S. Virgin Islands



50 COUNTRIES



In response to COVID-19, HURRICANES & TYPHOONS, WILDFIRES, FLOODING, EARTHQUAKE, COMPLEX HUMANITARIAN EMERGENCIES and various LOW-ATTENTION DISASTERS.

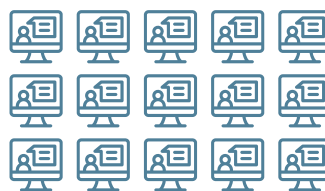
193
GRANTS

OUR CONSULTING SERVICES

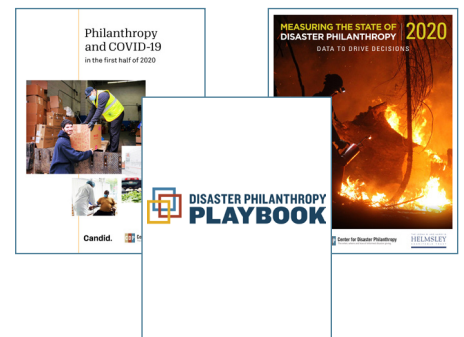
17

CLIENTS representing community foundations and corporations

OUR EDUCATIONAL RESOURCES



15 WEBINARS



And **BLOGS**, **DISASTER PROFILES**, **ISSUE INSIGHTS**, **REPORTS**, **TOOLKITS**, **EVENTS** and **COMMENTARIES**

OUR MAJOR RECOGNITIONS



One of eight nonprofits featured in **2020 CNN Heroes: An All-Stars Tribute**

\$10M

Unrestricted gift for our COVID-19 Response Fund from philanthropist **MacKenzie Scott**

2020 BEST CHARITY LISTS

GOOD HOUSEKEEPING

The Washington Post

TOWN&COUNTRY

A YEAR OF HARDSHIPS, COMMUNITY AND HOPE

2020 WAS A YEAR THAT CHALLENGED COMMUNITIES WORLDWIDE WITH DISASTERS UPON DISASTERS. The global COVID-19 pandemic and its wholesale impact on people's lives – from health and livelihoods to education and the arts – was the backdrop of many of the other disasters that governments, the private sector, nonprofits and donors were called upon to respond.

According to the [National Oceanic and Atmospheric Administration](#), 22 “billion-dollar disaster events,” which capture a mere fraction of the scale of the human impact, caused \$95 billion in total damages and claimed 262 lives in the U.S. in 2020. We witnessed firsthand how climate change exacerbates natural disasters: Last year's historic North American wildfire season broke records in California and Colorado. By the end of 2020, we saw the most active and fifth costliest Atlantic hurricane season with 31 named storms, major flooding in the Midwest, a catastrophic derecho in Iowa and deadly tornadoes in Tennessee.

Additionally, the disproportionate impact of COVID-19 on Black, Indigenous and People of Color (BIPOC) communities in the U.S. alongside the murder of George Floyd sparked a national reckoning with racism, white supremacy, and systemic social, health and political disparities. Social injustice was the [second pandemic of 2020](#).

From Venezuela to the Sahel to Yemen, many parts of the world continued to wrestle with [complex humanitarian emergencies](#) caused by conflict, climate change, drought, famine, economic challenges and other conditions. Fires, flooding, earthquakes and other natural disasters hit billions of people across the world.

In response, we reinforced our commitment to providing expert advice, resources, and domestic and international funds that are community-informed, locally focused and equity-centered. We intentionally gave our fund directors the flexibility to tap concurrently into different funding streams so they can **meet the evolving multi-disaster needs of our grantee partners.** Together with CDP, our partners and donors gave with confidence, knowing that our collective efforts help communities recover from disasters stronger than before.

BACKGROUND: PHOTO BY CHRISTOPHER MICHEL

RIGHT: PHOTO COURTESY OF THE NATIONAL ASSOCIATION OF FREE AND CHARITABLE CLINICS





COVID-19 Response Fund

We support containment, response and recovery for those most affected by the global pandemic. Our grantee partners address urgent needs and tackle systemic issues that hinder the equitable recovery of Black, Indigenous and People of Color communities, low-income households, women, immigrants and refugees, older adults, people with disabilities, and other vulnerable populations.

IN
2020:



By the end of 2020, **more than 1.8 million had died and more than 61 million had recovered from COVID-19 while the global pandemic overwhelmed health care, social and economic infrastructures worldwide.** Our team believed that efforts to educate, inform, provide basic needs and prevent the spread of the coronavirus worldwide were critical to long-term recovery. [Grants from CDP's COVID-19 Response Fund](#) included **rapid-response support for immediate needs, especially in low-income and communities of color, such as medical supplies and personal protective equipment, direct cash, educational resources for students and teachers, mental health services, hygiene kits, information campaigns and more.** A number of grants provided co-funding with other CDP disaster funds as we recognized the impact of multiple disasters on communities.

Many institutional, corporate and individual donors across the country stepped up in support of the Fund to help meet unparalleled needs in communities in the U.S. and around the world. For example, more than 170 athletes, including Stephen Curry, Simone Biles, Michael Phelps and Jack Nicklaus, participated in **Athletes for Relief**, which raised more than \$265,000. **MacKenzie Scott** donated \$10 million in unrestricted support. Coca-Cola Foundation and Humana donated \$2 million and \$5 million, respectively. Linksoul donated all proceeds from the sale of Geoff Cunningham-designed t-shirts to CDP.

As a result, the CDP COVID-19 Response Fund was – and still is – our largest pooled fund.



PHOTO BY SGT. AMOURIS COSS, U.S. ARMY NATIONAL GUARD

IMPACT HIGHLIGHT

Project HOPE

PROJECT HOPE launched one of the first online COVID-19 training programs for front-line health care workers worldwide. Educational materials were made available in six different languages, reaching 150 countries and more than 79,000 COVID-19 responders. With CDP's support and in partnership with the experts at DisasterReady.org and SweetRush, Project HOPE converted the live training modules into free, on-demand online courses for front-line workers.

[Read more.](#)

Atlanta Wealth Building Initiative (AWBI)

Not long after the COVID-19 pandemic started, CDP supported the **AWBI COVID-19 SMALL BUSINESS RELIEF FUND**, which provided cash and technical assistance to help businesses with scenario planning, cash flow analysis, marketing and more. This model helped more than 65 Black-owned businesses such as Toy Box, which managed to sustain its business and thrive. Toy Box also expanded the reach of its curriculum by selling culturally-minded STEAM boxes to schools.

DONOR HIGHLIGHT

Ultimate Kronos Group

"We partnered with the Center for Disaster Philanthropy because we were confident in their ability to identify and provide support in the areas of greatest need both in the short term and in the longer term. Through their consultative, collaborative approach, we were able to fund meaningful relief efforts around the globe where our employees live and work," said Heather Geronemus, director of public relations and corporate social responsibility of UKG.

We are thankful for UKG's support, as well as that of their employees who stepped up and made significant contributions to our COVID-19 Response Fund. **Thank you, UKG!**



U.S. Wildfires Recovery Funds

We work directly with local nonprofits, donors and community members as they rebuild and recover from wildfires. We invest in recovery programs that build stronger communities while also supporting mitigation and preparedness so they can keep pace with the increasing trend and threat of wildfires.

IN
2020:

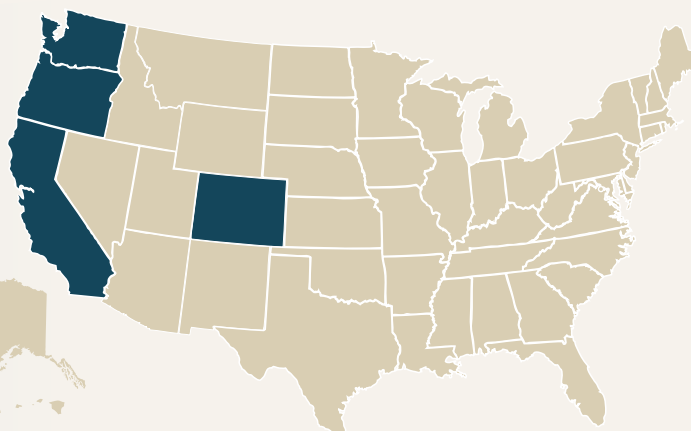


\$2.1M

AWARDED TO

7 A graphic consisting of seven small, dark red hexagons arranged in a cluster.

ORGANIZATIONS FOR
WILDFIRE RELIEF IN
CALIFORNIA, COLORADO,
OREGON & WASHINGTON



As in many disasters, recovery from wildfires takes years. COVID-19 made response and recovery efforts even more challenging in 2020.

Through our [2019 California Wildfires Recovery Fund](#), we mobilized resources to support Sonoma County's **predominantly Latinx migrant and farm-working communities** affected by the 2019 Kincaid Fire that destroyed almost 400 buildings, burned more than 77,000 acres and disrupted the local economy.

Through community partners, we supported **disaster case management**, including **financial assistance**, the local long-term recovery group, pro-bono legal services, and mental health and PTSD programs for Latinx youth.

In 2020, we converted our annual California wildfires fund to a standing fund to proactively fundraise as wildfires threaten [California](#) due

to worsening drought and weather conditions each year. Our support helped World Central Kitchen serve and distribute [58,000 meals to first responders and evacuees of the CZU Lightning Complex Fire](#). We also funded **language translation services** to ensure that LNU Complex Fire and Glass Fire survivors can access critical services.

We built relationships and shared expertise among community members affected by Colorado's Cameron Peak Fire, East Troublesome Fire and Calwood Fire as first steps toward supporting long-term recovery.

Through CDP, donors, such as [Google.org](#) and [First Republic Bank](#), their employees and all who gave through campaigns like those hosted by [The Daily Show](#) help communities recover stronger after wildfires.



PHOTO COURTESY OF FOREST SERVICE NW

IMPACT HIGHLIGHT

Latino Community Foundation (LCF)

LCF AND THEIR JUST RECOVERY PARTNERS have been working to fill ongoing language and cultural responsiveness gaps in every disaster since 2017. In 2020, a Google.org-funded CDP grant supported efforts such as professional interpreting services for multi-sector emergency calls and staffing a 3.5-acre encampment in Napa so that Latino and Indigenous families were not left to suffer in the shadows. [Read more.](#)

DONOR HIGHLIGHT

Bohemian Foundation

BOHEMIAN FOUNDATION is a private family foundation that supports local, national and global efforts to build strong communities. The Colorado-based organization has been an engaged and generous partner of CDP's for the last three years, providing general operating grants and supporting hurricane recovery efforts. When disaster struck closer to home, Bohemian Foundation turned to CDP to provide medium- and long-term support to Colorado residents affected by the 2020 wildfires. **Thank you, Bohemian Foundation!**



Atlantic Hurricane Season Recovery Fund

We support initiatives that prioritize communities devastated by Atlantic hurricanes, especially those facing systemic barriers to equitable recovery. We focus on meeting medium- and long-term needs such as rebuilding homes and livelihoods, mental health services and other challenges identified by the affected communities that arise as recovery efforts progress.



By the time the record-breaking [2020 Atlantic Hurricane Season](#) ended in November with 31 named storms, 430 people had lost their lives and affected areas were left with an aggregate \$47 billion worth of damages.

Additionally, COVID-19 posed additional challenges in communities that were still recovering from 2018 and 2019 hurricanes. Through our grantee partners, we funded programs to **repair and rebuild homes, support livelihoods, provide stable access to water, sanitation and hygiene, improve emergency shelters**, and support other recovery and **preparedness initiatives**.

In 2020, we also renamed our annual hurricane funds to a standing [Atlantic Hurricane Season Recovery Fund](#) to enable proactive fundraising,

which allows us to focus on mitigative projects in addition to medium- and long-term recovery.

With the support of donors such as **The Patterson Foundation, The Crown Family Philanthropies, MKM Foundation** and **Newton and Rochelle Becker Charitable Trust**, we provided our grantee partners with vital resources to help Atlantic Hurricane survivors, especially those that have been systemically marginalized, recover and better withstand future disasters.



PHOTO BY STAFF SGT. JOSIAH PUGH, LOUISIANA NATIONAL GUARD

IMPACT HIGHLIGHT

Water Mission, Bahamas 2019 HURRICANE DORIAN

WATER MISSION and its partners have been strengthening Marsh Harbour's municipal water systems using innovative solar technology since Hurricane Dorian devastated the Abacos Islands. CDP funded rain catchment with treatment systems in six area schools, providing children with reliable, safe water. It also supported "Abaco Sunny Waters," a field of solar panels that will be integrated into the local power grid, supplying reliable and efficient solar power to run local water systems.

DONOR HIGHLIGHT

First Republic Bank

Early in the pandemic, San Francisco-based **FIRST REPUBLIC BANK** was looking for a partner to help with their philanthropic efforts. They turned to CDP and quickly became a loyal donor, supporting our COVID-19 Response Fund and California Wildfires Recovery Fund. First Republic also stepped up when hurricanes struck across the country by providing additional grant dollars to the Atlantic Hurricanes Recovery Fund.

Thank you, First Republic!



Global Recovery Fund

We support medium- and long-term recovery after an international disaster or complex humanitarian emergency. Some donors choose to support a specific disaster, while others entrust us to allocate funding where it is needed most.



In its second year, the [CDP Global Recovery Fund](#) provided philanthropists a flexible, efficient solution to address medium- to long-term recovery at sudden-onset disasters or protracted humanitarian crises.

In 2020, we awarded World Wildlife Fund a two-year \$1.19 million grant, our largest international grant, to support Indigenous fire management and species and habitat restoration and recovery in areas affected by the [Australian bushfires](#). We funded technical and institutional programs that increase protections of Indigenous lands and prevent the spread of COVID-19 in the [Brazilian Amazon](#). We supported structural repairs to historically and culturally significant homes damaged by the [Beirut explosion](#). We backed small business support, maternal and pediatric health care, and surgical treatment near or within [Yemen's conflict zones](#).

Our grants also funded hospital rehabilitation, care for victims of violence and at-risk teenagers, and treatment and prevention of disease outbreaks in [Venezuela](#). We supported campaigns to address hunger and gender-based violence, provide access to clean water, and prevent the spread of COVID-19 among Indigenous and remote rural communities along the [Colombia-Venezuela border](#).



PHOTO COURTESY OF EUROPEAN UNION/ECHO, CC BY-SA.20

IMPACT HIGHLIGHT

Mercy Corps, Yemen COMPLEX HUMANITARIAN EMERGENCY

Mervat, a university student with disability, small business owner and sole breadwinner, faced bankruptcy. She used a grant from **MERCY CORPS'** CDP-funded "Pathway to Sustainable Livelihoods" program to buy a mobile cart to sell sweets, toiletries and stationary next to her neighborhood school and the busy Birbasha market. "With the profits from my cart, I am now earning enough to pay for my school fees, my parents' medicine and our everyday needs!" said Mervat.

DONOR HIGHLIGHT

T. Rowe Price Foundation

As a part of the **T. ROWE PRICE FOUNDATION's** philosophy, they note that "We recognize that meaningful and lasting change cannot happen overnight," which aligns perfectly with CDP's focus on medium- to long-term disaster recovery. We are grateful that the Foundation's leadership saw the need for support worldwide, as they made a major contribution to fund work in areas affected by the Australian Bushfires.

Thank you, T. Rowe Price Foundation!



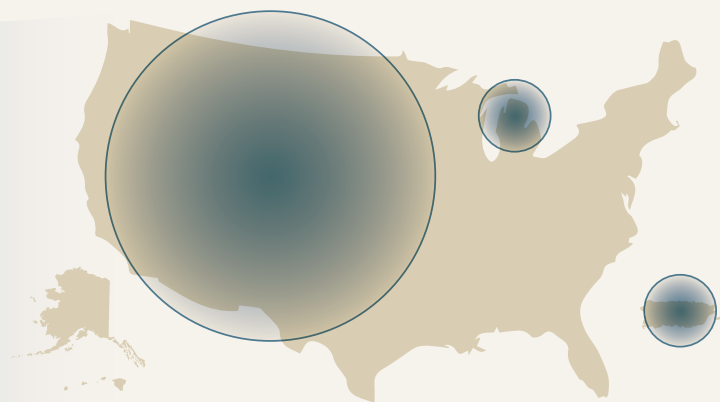
Disaster Recovery Fund

We support efforts across the entire disaster life cycle, from disaster preparedness to long-term recovery in response to emergencies in the U.S. Most of our donors trust us to allocate investments where they are needed most.

IN
2020:

\$251K
RAISED

\$153K
AWARDED TO
3 
ORGANIZATIONS IN
RESPONSE TO
EARTHQUAKES AND
FLOODING



Disasters can happen anytime and anywhere. From earthquakes to flooding, large to small unnamed disasters, these crises can devastate families and entire communities.

Through our [Disaster Recovery Fund](#), we invest in long-term strategic recovery, rebuilding and prevention efforts to strengthen communities in the U.S. and U.S. territories and position them to withstand future disasters.

In 2020, with funding from donors, we supported efforts to [repair and maintain community water](#)

[infrastructure](#) after the Puerto Rico earthquake. With additional support from Google.org, we also funded a disaster preparedness program specially designed to assist Puerto Ricans with disabilities.

Moreover, we restored or replaced wells to provide [safe water to residents](#) affected by the failure of two dams in Michigan.

Donations from this fund also provided vital support for community recovery from 2020 North American wildfires in states other than California and Colorado.

DONOR HIGHLIGHT

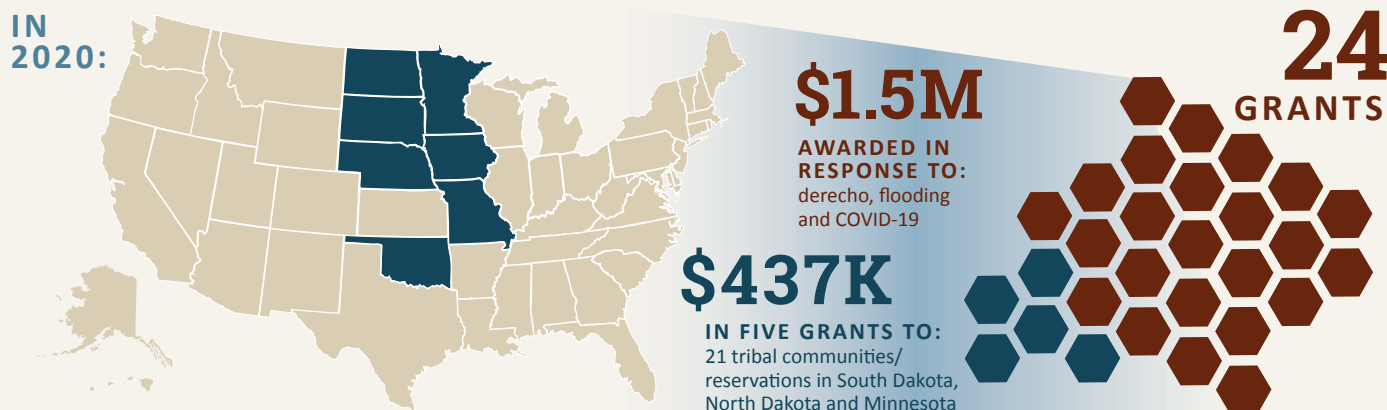
The Lisa and Douglas Goldman Fund

THE LISA AND DOUGLAS GOLDMAN FUND is a private foundation committed to providing support for charitable organizations that enhance our society. A regular and generous partner of CDP's work, the Fund understands the importance of investing in medium- to long-term recovery efforts like the Disaster Recovery Fund. **Thank you to The Lisa and Douglas Goldman Fund!**



Midwest Early Recovery Fund

We support the needs of populations that are disproportionately affected by low-attention disasters in the Midwest, including systemically marginalized communities. Our pre-existing presence, relationships and dedication to the Midwest and Native and Tribal communities facilitate a more effective recovery when disaster strikes.



Not all catastrophes that devastate communities in the U.S. make headlines. These low-attention disasters include tornadoes, flooding, earthquakes, landslides and wildfires that typically affect the Midwest and the Native nations that call this region home.

Through our [Midwest Early Recovery Fund](#), with the support of [Margaret A. Cargill Philanthropies](#), we continued to build local capacity to provide early to long-term disaster recovery services, meet the needs of those disproportionately affected and promote solutions that lead to equitable, holistic community recovery.

In 2020, in response to a destructive derecho, storms that caused severe flooding and COVID-19, we funded [disaster case management](#) to advocate for and help survivors access vital resources, [repair/rebuild construction managers](#) and [disaster recovery coordinators](#) (many were also bilingual service providers and representatives of affected communities), and [psychosocial wellness initiatives](#). We supported our community partners with [technical assistance](#) and [advocacy, connecting them with other funders and each other](#).

IMPACT HIGHLIGHT

White Swan Recovery Group YANKTON SIOUX TRIBE, LAKE ANDES, SOUTH DAKOTA

Major flooding that persisted from spring through fall destroyed roads, damaged homes (including mold infestation) and heightened food insecurity among White Swan's 300 tribal residents. With CDP's support, the community can now do mold remediation without relying on outside assistance. Its community center is also increasing its capacity to become a food pantry for the residents of this isolated reservation. [Read More](#).

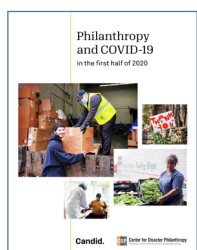


EDUCATIONAL RESOURCES

We provided grantmakers and donors with valuable data, expert insights, tools and resources on strategic practices that effectively support post-disaster recovery, preparation and mitigation through our [Issue Insights](#), [Disaster Profiles](#) and [blog](#) as well as:

Webinars

We featured CDP and other field experts in 15 webinars to discuss topics such as [responding to multiple crises amid COVID-19 and climate change](#), [racial disparities and disasters](#) and [making effective rapid-response grants](#).

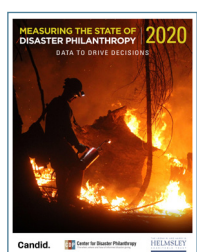


Philanthropy and COVID-19 Brief

In partnership with **Candid**, the brief tracks how institutional grantmakers and high net-worth donors gave during the first six

months of the global pandemic. Mainstream news outlets such as **CNBC** and trade publications such as **Inside Philanthropy** and **Alliance Magazine** covered the report.

[Learn More.](#)



Measuring the State of Disaster Philanthropy 2020

This edition of our annual research report examines how the philanthropic community

responded to 2018 disasters such as **Hurricane Michael**, **the Sulawesi earthquake**, and **the civil unrest in Syria and Yemen**. What lessons can we take from how donors responded to these disasters?

[Learn More.](#)



Disaster Philanthropy Playbook

We added timely content and stories of impact in this comprehensive guide to help the

philanthropic community plan for future disasters through effective practices and innovative approaches:

Mental Health, Grief and Bereavement

Explores how disasters affect mental health, grief and bereavement and provides a tipsheet and compilation of resources to help funders respond effectively. This toolkit was produced in partnership with the New York Life Foundation.

Crisis Communications

Helps grantmakers prepare a plan for communicating with internal and external stakeholders in times of disasters.

[Learn More.](#)

Speaking Engagements

Amid the pandemic, our team continued to share expertise as featured speakers in **44 podcasts, regional and national events, virtual and in-person conferences, and webinars**. Our chief executive, Patricia McIlreavy, also visited Nasdaq's MarketSite and rang the Closing Bell in March.

Commentaries

Our staff continued to provide thought leadership to grantmakers and donors through articles on CDP's blog and other sites including **Center for Effective Philanthropy's** blog and **Charity Navigator**.



RACISM IS A
PANDEMIC

PHOTO BY EHIMETALOR AKHERE UNUABONA ON UNSPLASH

DIVERSITY, EQUITY AND INCLUSION (DEI)

IN 2020, WE BEGAN IMPLEMENTING AN EQUITY-CENTERED STRATEGIC PLAN THAT WILL CONTINUE TO GUIDE OUR WORK DURING THE NEXT TWO YEARS.

The disproportionate impacts of COVID-19 on Black, Native American, Asian American and Latinx communities alongside the racial injustices that inspired a worldwide movement to end white supremacy, racial bigotry and misogyny added fuel to our organization-wide journey in diversity, equity and inclusion.

We created a **DEI staff task force** to begin drawing up a roadmap for CDP's equity journey, assembling resources and creating safe space for team members for candid conversations about what racial and intersectional equity means for each of us individually, as an organization with power and privilege striving to serve marginalized communities and as members of the philanthropic community.

In a **statement of solidarity** with changemakers working to address systemic racism, we committed to using our philanthropic resources and platform to help create real transformative change and stand up for what is right, just and fair.

In partnership with **CONVERGE**, we held a **series of facilitated staffwide trainings** in July and September to explore unconscious bias, racial and intersectional equity, and institutionalized racism in philanthropy.

Our equity journey is just beginning. In the coming year, we commit to charting our path forward, including articulating CDP's guiding principles and the steps we're taking to walk the talk in our operations, policies and practices.

PARTNERSHIPS

Through our collaborative partnerships, we provided the broader community of grantmakers and donors with practical information to respond quickly and effectively to disasters. These partnerships include the **COUNCIL ON FOUNDATIONS, UNITED PHILANTHROPY FORUM, INTERACTION, NATIONAL VOAD** and **CHARITY NAVIGATOR**.



THANK YOU TO OUR LOYAL DONORS

**WE ARE GRATEFUL TO THE FOLLOWING
DONORS THAT HAVE SUPPORTED OUR WORK
FOR AT LEAST THREE CONSECUTIVE YEARS.
YOUR TRUST IN US AS STEWARDS OF YOUR
GIVING IS HELPING OUR COMMUNITIES
RECOVER STRONGER.**

Lori Bertman
Bohemian Foundation
Capital Group
Margaret A. Cargill Philanthropies
Jeannine & J. Richard Commander
The Crown Family
Andrew Delaney Foundation
Duck and Bettina Charitable Gift Fund
Enterprise Holdings Foundation
Google.org
The Conrad N. Hilton Foundation
Patty Hodgins
Penelope Ingalls
Sheela Kangal
Kate Kaplan
The Klarman Family Foundation
Maine Community Foundation
MKM Foundation
Charles Stewart Mott Foundation
Oklahoma City Community Foundation
The Patterson Foundation
Irene W. and C.B. Pennington Foundation
Susan Pollack
T. Rowe Price Foundation
Steelcase Foundation
The UPS Foundation
The Wallace Foundation
Westfield Insurance Foundation

BACKGROUND: PHOTO COURTESY OF FOREST SERVICE NW

LEFT: PHOTO BY STAINLESS IMAGES ON UNSPLASH

FINANCIALS

We thank all our donors for supporting our efforts to provide our grantee partners worldwide with vital resources so that communities most affected by disasters can recover stronger than before. We appreciate the numerous donors who chose to support our general operations and provide CDP the flexibility associated with such gifts. Because of your generosity and the hard work of our community partners, 2020 was our most impactful year yet.

	FOR THE YEAR ENDED 12/31/16	FOR THE YEAR ENDED 12/31/17	FOR THE YEAR ENDED 12/31/18	FOR THE YEAR ENDED 12/31/19	FOR THE YEAR ENDED 12/31/20
REVENUES					
Contributions and Grants	\$4,219,632	\$21,254,221	\$7,058,152	\$13,467,017	\$54,654,603
Consulting Fees	173,583	250,773	567,355	353,880	306,365
In-Kind Contributions	-	-	-	-	140,473
Interest and Other Income	5,201	26,086	106,235	60,254	108,968
TOTAL REVENUES	\$4,398,416	\$21,531,080	\$7,731,742	\$13,881,151	\$55,210,409
EXPENSES					
Program Services	\$2,262,441	\$2,253,485	\$16,909,383	\$12,586,363	\$32,033,983
Management & General	197,874	242,985	244,781	357,003	406,988
Fundraising	155,967	126,071	271,419	354,267	418,489
Total Expenses	\$2,616,282	\$2,622,541	\$17,425,583	\$13,297,633	\$32,859,460
Change in Net Assets	\$1,782,134	\$18,908,539	\$(9,693,841)	\$583,518	\$22,350,949
Cash and Cash Equivalents	\$1,319,053	\$9,509,877	\$12,759,784	\$11,408,827	\$33,079,782
Certificates of Deposit	\$-	\$12,001,072	\$1,001,444	\$-	\$1,002,227
Net Assets Without Donor Restrictions	\$815,758	\$2,415,638	\$3,210,887	\$2,214,287	\$7,715,659
Net Assets With Donor Restrictions	\$4,019,105	\$21,327,764	\$10,838,674	\$12,418,792	\$29,268,369

The decrease in contributions and net assets and the increase in program services expenses between 2018 and 2017 are a result of significant dollars raised for disasters that occurred in 2017 (such as Hurricanes Harvey, Irma and Maria) that were granted out in 2018. The increase in contributions, program services expenses and net assets in 2020 are primarily a result of the COVID-19 Response Fund.



ABOUT THE CENTER FOR DISASTER PHILANTHROPY

MISSION

Leverage the power of philanthropy to mobilize a full range of resources that strengthen the ability of communities to withstand disasters and recover equitably when they occur.

VISION

A world where the impact of disasters is minimized by thoughtful, equitable and responsible recovery for all.

Since 2010, CDP has awarded more than \$60.5 million in grants in response to hurricanes, wildfires, pandemics, complex humanitarian emergencies and other disasters worldwide.

BACKGROUND: PHOTO BY PHIL ROEDER, CC BY 2.0

LEFT: PHOTO COURTESY OF FOREST SERVICE NW

2020 BOARD OF DIRECTORS

Nancy Anthony

Executive Director, Oklahoma City Community Foundation

Lori Bertman BOARD CHAIR

President and CEO, Irene W. and C.B. Pennington Foundation

Kenneth Jones BOARD SECRETARY AND TREASURER

Vice President and Chief Financial Officer,
The John D. and Catherine T. MacArthur Foundation

Kathleen Loehr

Principal, Kathleen Loehr & Associates

Christine Riley Miller

Director of Sustainability, Samsonite LLC

Joe Ruiz BOARD VICE CHAIR

Director, UPS Humanitarian Relief Program,
The UPS Foundation

Sabrena Silver

Partner, White and Case LLP

Anita Whitehead

Principal, KPMG and Board Chair,
KPMG US Foundation

Sam Worthington

CEO, InterAction

STAFF

Brennan Banks

Director of Recovery Funds
Plantation, Florida

Nancy Beers

Senior Associate
Albert Lea, Minnesota

Suri Clark

Program Manager, CDP COVID-19
Response Fund
Houston, Texas

Jennifer Commander

Chief Financial Officer
Arlington, Virginia

Cari Cullen

Director, Midwest Early Recovery Fund
West Fargo, North Dakota

Ruja Entcheva

Marketing and Communications
Manager
Sarasota, Florida

Robin Fender

Development Associate
Silver Spring, Maryland

Tanya Gulliver-Garcia

Director of Learning and Partnerships
New Orleans, Louisiana

Liz Joseph

Operations Associate
Oak Hill, Virginia

Kim Maphis Early

Senior Associate
Nashville, Tennessee

Devin Mathias

Director of Development
State College, Pennsylvania

Patricia McIlreavy

President and CEO
Washington, D.C.

Kristina Moore

Director of Marketing and
Communications
Denver, Colorado

Sally Ray

Director of Strategic Initiatives
Cypress, Texas

Heidi Schultz

Program Manager
Sioux Falls, South Dakota

Regine Webster

Vice President
Nashville, Tennessee

Matthew Woodall

Writer
Regina, Saskatchewan (Canada)

Natalie Worthan

Manager, Systems and Special Projects
Barboursville, Virginia

COVER PHOTOS (CLOCKWISE FROM TOP LEFT): PHOTO BY SGT. AMOURIS COSS, U.S. ARMY NATIONAL GUARD; PHOTO COURTESY OF FOREST SERVICE NW; PHOTO COURTESY OF MEALS ON WHEELS; PHOTO BY BRYAN PATRICK FOR LATINO COMMUNITY FOUNDATION; PHOTO COURTESY OF ACTION AGAINST HUNGER

BACK COVER PHOTOS (CLOCKWISE FROM TOP LEFT): EUROPEAN UNION/ECHO; PHOTO COURTESY OF FOREST SERVICE NW; PHOTO BY STAFF SGT. JOSIAH PUGH, LOUISIANA NATIONAL GUARD; PHOTO COURTESY OF CATHOLIC CHARITIES OF THE DIOCESE OF SANTA ROSA; PHOTO COURTESY OF NATIONAL ASSOCIATION OF FREE AND CHARITABLE CLINICS

disasterphilanthropy.org



@FUNDS4DISASTER



/FUNDS4DISASTER



@FUNDS4DISASTER



/COMPANY/CENTER-FOR-DISASTER-PHILANTHROPY



Center for Disaster Philanthropy
The when, where and how of informed disaster giving

ONE THOMAS CIRCLE, NW, SUITE 700
WASHINGTON, DC 20005
PHONE: 202-464-2018