

Hurricane Ida: Funding Urgent Needs and Long-Term Recovery

September 2, 2021



Center for Disaster Philanthropy

The when, where and how of informed disaster giving

Moderator

2



Patty McIlreavy

President and CEO

Center for Disaster Philanthropy



Center for Disaster Philanthropy
The when, where and how of informed disaster giving

Thank You to Our Co-Sponsors

3

This webinar is co-sponsored by:



How to Participate

4

- ❑ Look for the fully captioned webinar recording and summary at disasterphilanthropy.org.
 - ▣ Live captioning is available now via Zoom. Click on Closed Caption/Live Transcript to access it.
- ❑ Submit questions using Q & A box at the bottom of your screen.
- ❑ Use **#CDP4Recovery** to tweet along during the webinar.
- ❑ Complete the survey upon leaving the webinar.

Land Acknowledgement

“Acknowledgment is a simple, powerful way of showing respect and a step toward correcting the stories and practices that erase Indigenous people’s history and culture and toward inviting and honoring the truth.”

<https://usdac.us/nativeland>



Center for Disaster Philanthropy
The when, where and how of informed disaster giving

Hurricane Ida Update

6

- ❑ Hurricane Ida made landfall as an upper-level Category 4 hurricane, only 5 mph short of Category 5.
- ❑ Ida is tied with the 1856 Last Hurricane and 2020's Hurricane Laura as the strongest storms to make landfall in Louisiana.
- ❑ Over 1 million customers lost power, including the entire city of New Orleans.
- ❑ As of the morning of Sept. 2, there are 918,501 outages in Louisiana.



Photo credit: EntergyNOLA



Center for Disaster Philanthropy
The when, where and how of informed disaster giving

Speakers

7



Tanya Gulliver-Garcia
Director of Learning and Partnerships
Center for Disaster Philanthropy



Jessica Vermilyea
Executive Director
Lutheran Social Services Disaster Response



Jessica Vermilyea
Executive Director
*Lutheran Social Services Disaster
Response*



Center for Disaster Philanthropy
The when, where and how of informed disaster giving



Tanya Gulliver-Garcia

Director of Learning and Partnerships

Center for Disaster Philanthropy



Center for Disaster Philanthropy
The when, where and how of informed disaster giving

Flooding in LaPlace and Lafitte, Louisiana.

Photo credit: [LDWF](#)



Center for Disaster Philanthropy
The when, where and how of informed disaster giving



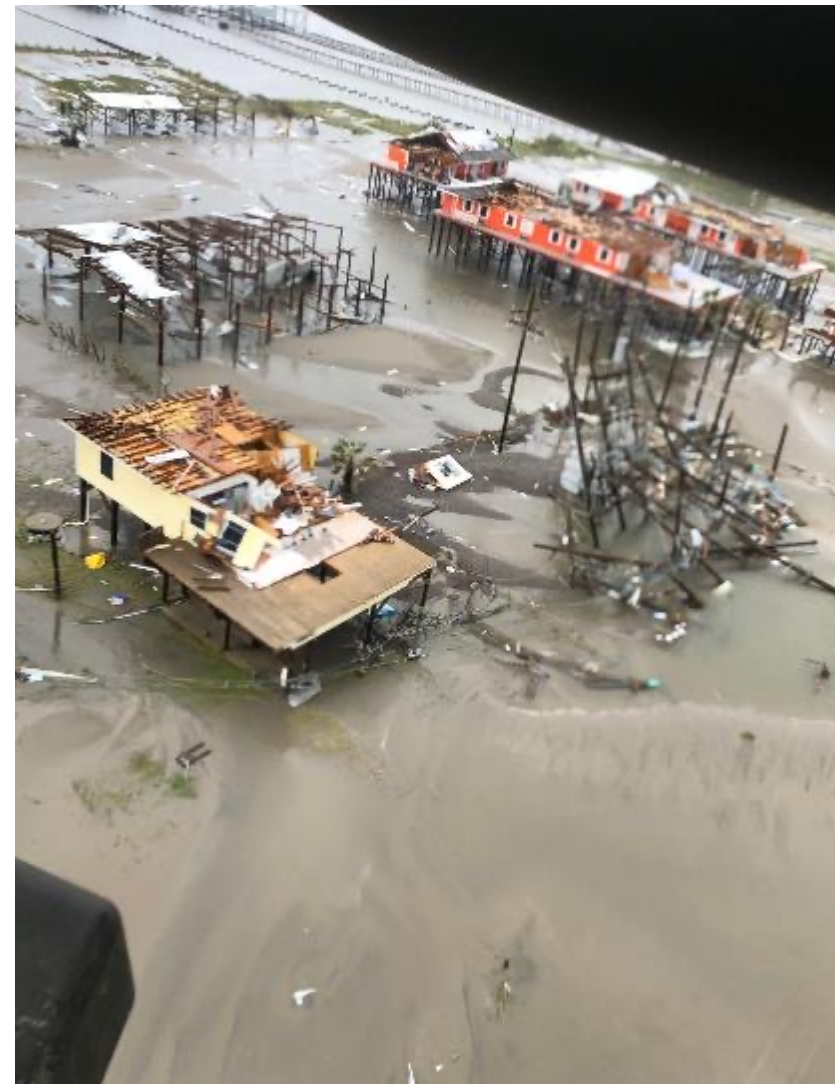
Hundreds of people were rescued from flooded areas in LaPlace and Lafitte. Photo credit: [LDWF](#)



Center for Disaster Philanthropy
The when, where and how of informed disaster giving



Damage in Louisiana.
Photo credit: [LA National Guard](#)





Ice is in high demand with the power out and temperatures in the 90s with heat indices of up to 108 degrees.



Damage in New Orleans. Photo credit: [NOLAReady](#)



Center for Disaster Philanthropy
The when, where and how of informed disaster giving



There is extensive damage to power lines throughout the affected area.

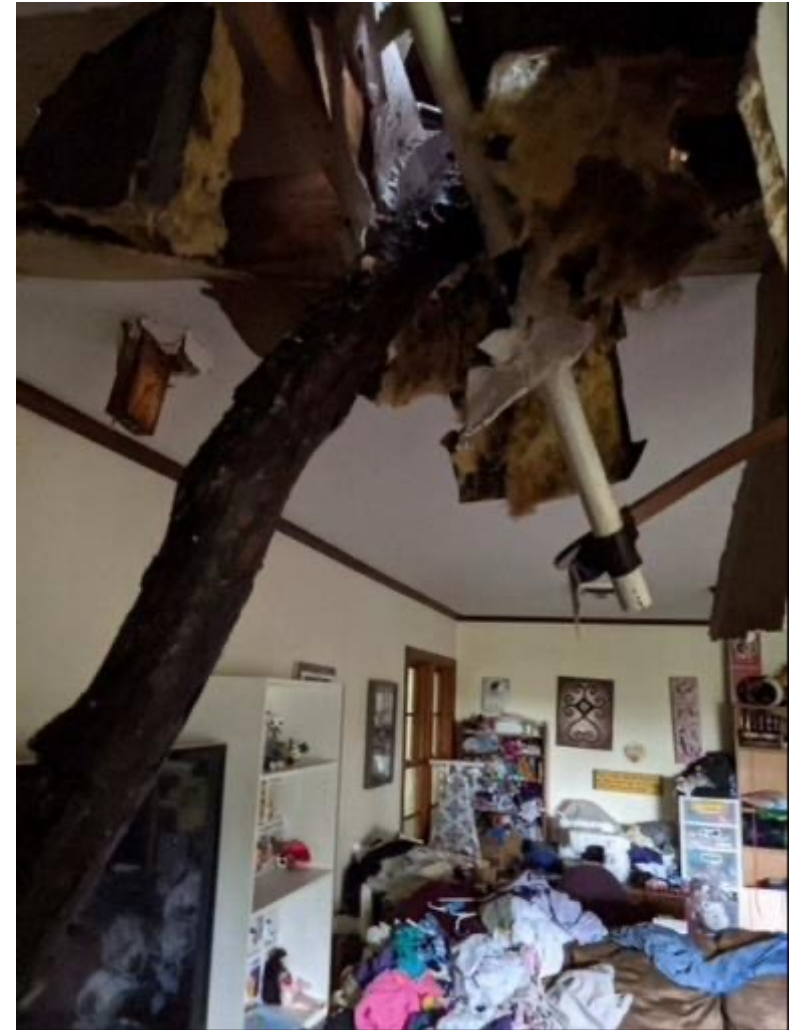




Due to loss of electricity, intersection lights are out. Photo credit: [NOLAReady](#)



Damage to a home in Louisiana.



Center for Disaster Philanthropy
The when, where and how of informed disaster giving



Louisiana's governor has asked evacuees not to return yet as power lines, trees and debris continue to pose hazards. Photo credit: [NOLAReady](#)



More than half the fuel stations in New Orleans and Baton Rouge were out of gasoline Wednesday morning. Lines are half a mile long.





Damage to a home in Louisiana.



Center for Disaster Philanthropy
The when, where and how of informed disaster giving

Q and A

21

- Submit questions using the Q & A box at the bottom of your screen.
- Use **#CDP4Recovery** to tweet insights.



Patty McIlreavy
President and CEO
*Center for Disaster
Philanthropy*



Jessica Vermilyea
Executive Director
*Lutheran Social
Services Disaster
Response*



Tanya Gulliver-Garcia
Director of Learning and
Partnerships
*Center for Disaster
Philanthropy*



Center for Disaster Philanthropy
The when, where and how of informed disaster giving

Key Takeaways for Funders

22

- ❑ Take the long view.
- ❑ Recognize there are places private philanthropy can help that government agencies might not.
- ❑ All funders *are* disaster philanthropists.
- ❑ Share best practices and learn lessons from past disasters.
- ❑ Trust the experts.



Entergy Corp. bucket trucks staged in Louisiana before Ida.



Center for Disaster Philanthropy
The when, where and how of informed disaster giving

CDP Resources

23

- ❑ Detailed [Issue Insights](#).
- ❑ Recordings of [past webinars](#).
- ❑ Regularly updated [Disaster Profiles](#).
- ❑ Monthly [newsletter](#).
- ❑ For more information, visit www.disasterphilanthropy.org.



Photo credit: NOLA FD



Center for Disaster Philanthropy
The when, where and how of informed disaster giving

CDP Atlantic Hurricane Season Recovery Fund

24

- The CDP Atlantic Hurricane Season Recovery Fund will support medium and long-term recovery needs stemming from Hurricane Ida.
- To learn more, visit www.disasterphilanthropy.org



Photo credit: NOLAReady



Center for Disaster Philanthropy
The when, where and how of informed disaster giving

Our Next Webinar

25



Photo by [Matthew Ball](#) on [Unsplash](#)

Join us **Sept. 9 at 2 p.m. ET** for our next webinar: **COVID-19's Long Tail: Developing a Mental Health Strategy for Recovery**



Center for Disaster Philanthropy
The when, where and how of informed disaster giving

Questions?

For additional information, contact:

Regine A. Webster

Vice President

regine.webster@disasterphilanthropy.org



Center for Disaster Philanthropy

The when, where and how of informed disaster giving