

# Afghanistan's earthquake: When a disaster meets a humanitarian crisis



*Photo Credit: IOM Afghanistan, 2022*

July 7, 2022

CENTER FOR DISASTER PHILANTHROPY



# Patty McIlreavy

President and CEO  
Center for Disaster Philanthropy



@funds4disaster

#CDP4Recovery







## HOW TO PARTICIPATE

### **Submit questions.**

Use Q & A box at the bottom of your screen.

### **Use #CDP4Recovery to tweet along.**

Follow CDP: @funds4disaster

### **Complete the survey.**

The link will open as you exit the webinar.

### **Look for the fully captioned webinar recording and summary at [disasterphilanthropy.org](https://disasterphilanthropy.org).**

Live captioning is available now via Zoom. Click on Closed Caption/Live Transcript to access it.

Photo Credit: [Wanman Uthmaniyyah](#) on [Unsplash](#)

# Thank you to our co-sponsors



**CHARITY NAVIGATOR**  
Your Guide To Intelligent Giving



**givingCOMPASS**



Network of Engaged  
International Donors





# Land Acknowledgment

“Acknowledgment is a simple, powerful way of showing respect and a step toward correcting the stories and practices that erase Indigenous people’s history and culture and toward inviting and honoring the truth.”

<https://usdac.us/nativeland>

CDP’s Land Acknowledgment is inspired by Dawn Knickerbocker, Native Americans in Philanthropy.

## QUESTIONS

### During the webinar, we'll discuss:

1. What does long-term recovery look like in the context of Afghanistan?
2. How do you navigate ongoing needs from the complex humanitarian emergency and immediate needs from the earthquake?
3. How can funders support recovery while respecting sanctions?



Photo Credit: [Sohaib Ghyasi](#) on [Unsplash](#)

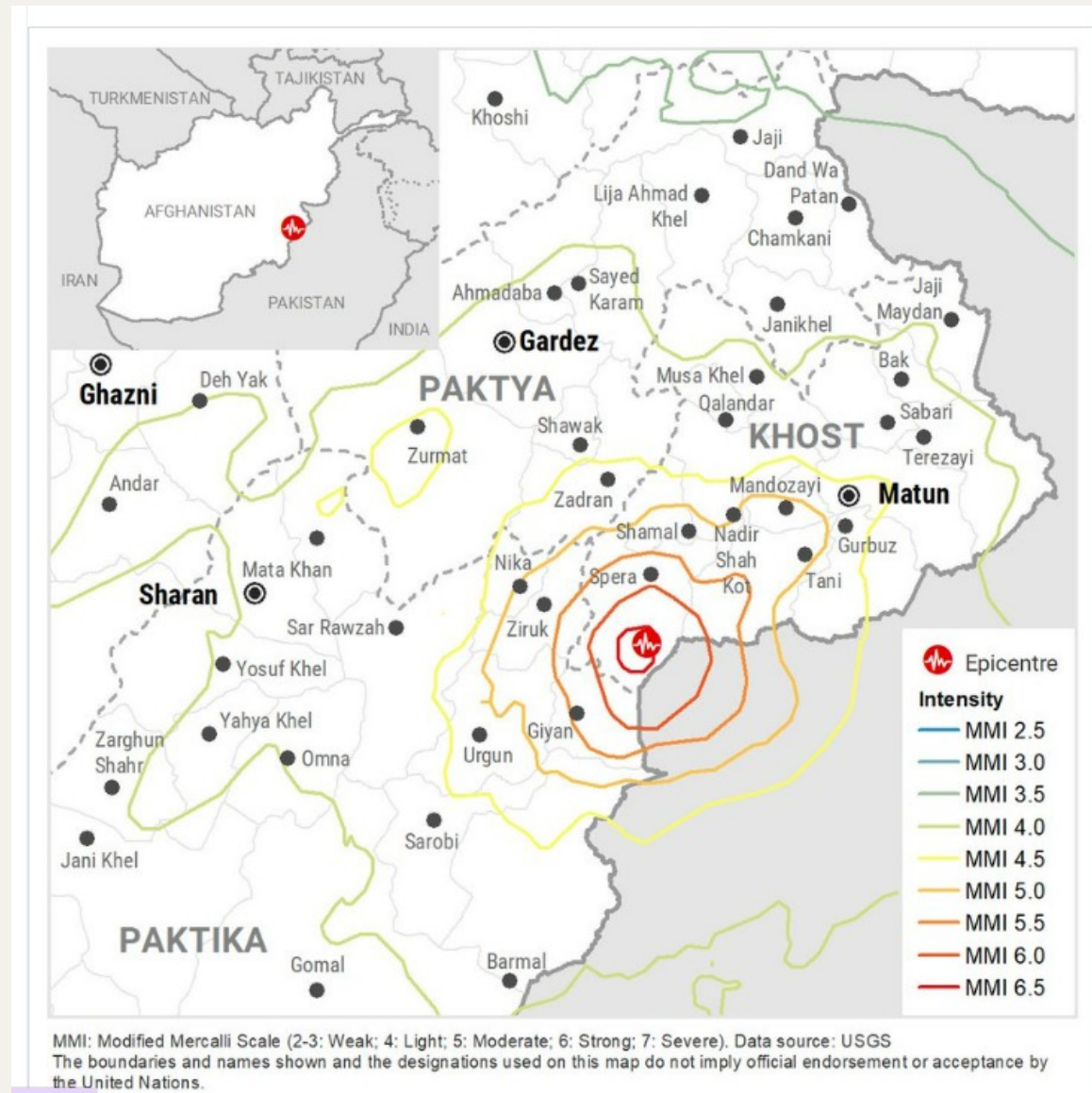


# Afghanistan Overview

- [24.4 million](#) people will be in humanitarian need in 2022, more than half the country's population.
- Afghanistan still faces the [highest prevalence](#) of insufficient food consumption globally
- 92% of the population faces [insufficient food consumption](#). Around [9.6 million](#) children are unable to secure food daily.
- Conflict in 2021 forced more than [700,000](#) people in Afghanistan to flee their homes, 59% of which were children.
- As of May 31, [2,069,703 Afghan refugees](#) were registered in the neighboring countries of Iran, Pakistan, Tajikistan, Uzbekistan and Turkmenistan. More than 1.2 million refugees are in Pakistan.
- More than [78,000](#) Afghans have been resettled in the U.S. in recent months, making this the largest U.S. resettlement effort in decades.

## June 22, 2022 earthquake

- 5.9 magnitude
- 6.2 miles deep
- 1,100 plus dead, many more injured
- 2,000 homes destroyed, 10,000 homes at risk



Source: [OCHA Afghanistan](#)



# Speakers

Thank you to our guests for joining us today.

#CDP4Recovery



**Hsiao-Wei Lee**

Deputy Country Director for  
Programme and Operations

World Food Programme -  
Afghanistan



**Federico Motka**

Head of Emergencies and  
Humanitarian Portfolio

Vitol Foundation



**Haqmal Munib**

Program Quality Coordinator  
CARE Afghanistan

# Hsiao-Wei Lee

Deputy Country Director for Programme  
and Operations

World Food Programme - Afghanistan



#CDP4Recovery





# Food Insecurity in Afghanistan

## Unprecedented levels of hunger across the country:

- **Nearly half of the population are facing severe hunger** (18.9 million people facing crisis or emergency levels of food insecurity).
- This is a **70% increase compared to the same period in 2020** as hunger has deepened year on year.
- Urban households are suffering from hunger at similar rates to rural households.
- Food is falling further and further out of reach for most people as prices continue to increase.
- **More than 60% of households are resorting to drastic coping strategies** such as selling household goods, assets, borrowing food and begging.
- **3.8 million children are estimated to be malnourished** with over 100,000 at risk of dying if treatment is not received.

## Key drivers:

- Economic collapse in the second half of 2021
- Three years of drought over past five years
- Impact of Covid-19
- Decades of conflict
- Ripple effects of the Ukraine crisis on food, fertiliser and agricultural input prices threaten to deepen food insecurity.

PROJECTED: harvest/post-harvest (JUNE – NOVEMBER 2022)

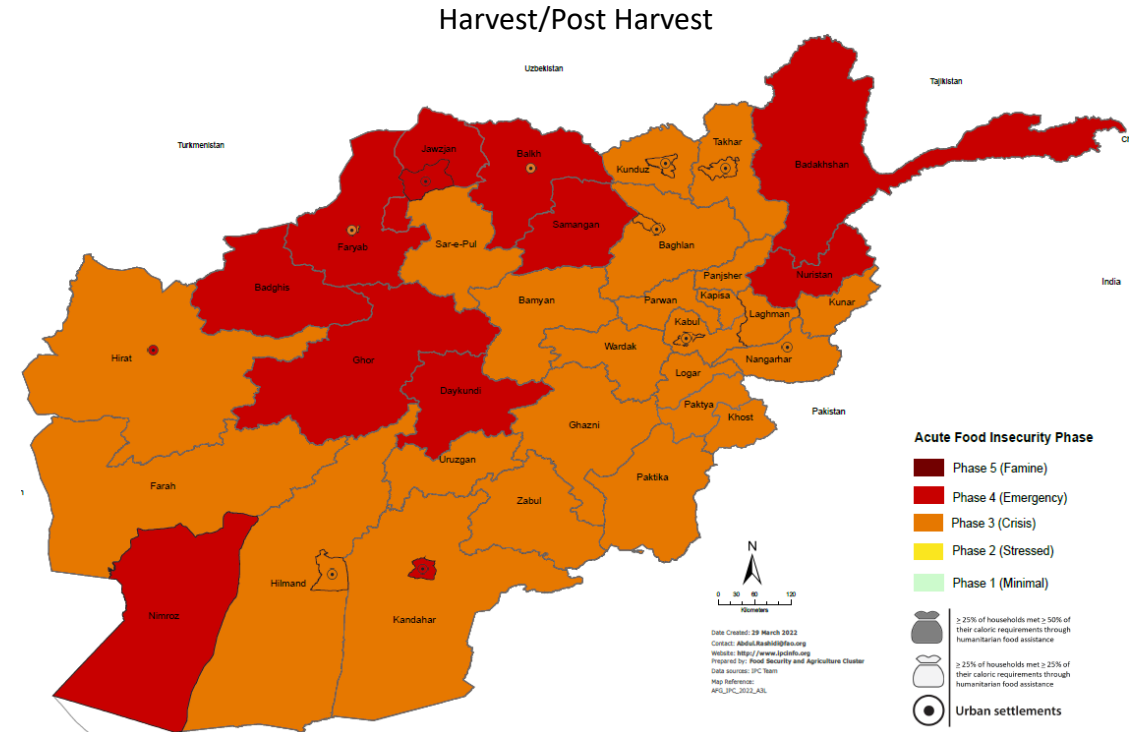


18.9 M

45% of the population analysed

People facing acute food insecurity (IPC Phase 3+) IN NEED OF URGENT ACTION

Phase 5	000 000 People in Catastrophe
Phase 4	6 M People in Emergency
Phase 3	12.9 M People in Crisis
Phase 2	14.5 M People in Stress
Phase 1	7.9 M People minimally food insecure

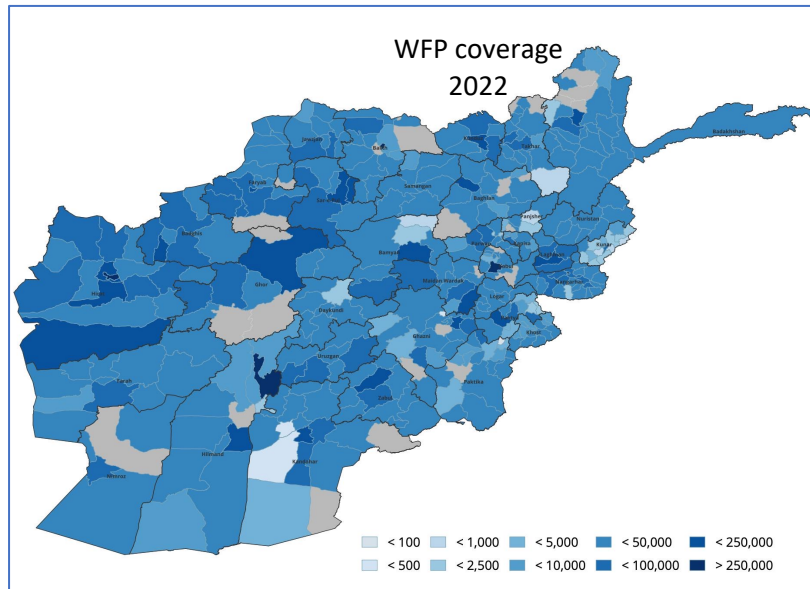


# WFP Response in Afghanistan

## WFP supports people in Afghanistan through:

- Emergency Food and Cash assistance to help people meet their food requirements
- Nutrition support to prevent and treat malnutrition in women and children.
- School feeding programmes to help encourage boys & girls education.
- Resilience building activities including asset creation, vocational skills training and value chains support.

In 2022, WFP has so far supported 19 million people with over half a million metric tons of food and nutrition items and USD 150 million in cash-based assistance across all 34 province.





# Earthquake and other shocks

## Earthquake response:

- On June 22, a **5.9 magnitude earthquake** struck southeastern Afghanistan devastating already vulnerable communities in Paktika and Khost provinces.
- At least 1,000 people have been killed, 1,500 injured and **362,000 people need humanitarian assistance** and support to rebuild their lives.
- **WFP** has so far provided **emergency food assistance to 42,000 people** to meet 100 percent of their food and nutrition needs.
- **WFP is providing logistics and air transport** to the humanitarian community providing storage space, communications equipment and flights to the earthquake affected areas.

## Flood response:

- **5,250 people identified to need food assistance following flash floods** in over 10 provinces.
- To date, **WFP has reached 3,660 people** and distributions are ongoing.

## Conflict related:

- **In Sar-e-Paul**, at least **10,500 people have been displaced** by ongoing conflict and need emergency food assistance.
- **In Panjshir**, the security situation remains tense with sporadic conflict. No new displacements reported and WFP operations continue.





# WFP requirements

- WFP requires USD 1.55 billion from July to December 2022, having received nearly USD 500,000 million. **WFP still faces a gap of over USD 1 billion to support 16 million people.**
- This includes, USD 172 million for winter prepositioning, earthquake and flood response as well as increased costs related to the Ukraine crisis.
- Ahead of the winter and start of the lean season, WFP aims to preposition 150,000 metric tons of food and nutrition assistance for 2.2 million people in areas that will become inaccessible as early as October 2022.
- It is critical for WFP to receive funds to purchase this food now to ensure it is delivered and prepositioned in time.



# Haqmal Munib

Program Quality Coordinator

CARE Afghanistan



#CDP4Recovery





# CARE's work in Afghanistan



- In Afghanistan since 1961
- Majority of the team are Afghans
- Focus on:
  - women's social and economic empowerment
  - health care
  - livelihood assistance
  - providing vulnerable households with cash assistance and essential food and non-food items.

# CARE's four main long-term program pillars

## Health, Equity and Rights

- Mobile Health Team / local service delivery
- Basic Health-Trauma CARE
- Nutrition
- Psycho-social Support
- GBV response through
- Referral of complicated health cases to registered health facilities
- Referral pathway mapping
- COVID Response
- Cash for SAM and MAM

## Resilience

- DRR (awareness, structure, governance)
- Women Social and Economic Support
- Livelihood interventions (VT, cfw, FfW, business development /employment support, SME support)
- Agriculture, green house, value chain support, farmer training..
- Road rehabilitation, canal cleaning, irrigation structure, protection wall – gabion weaving, creating community assets
- Livestock distribution and support

## CBE Education – primary

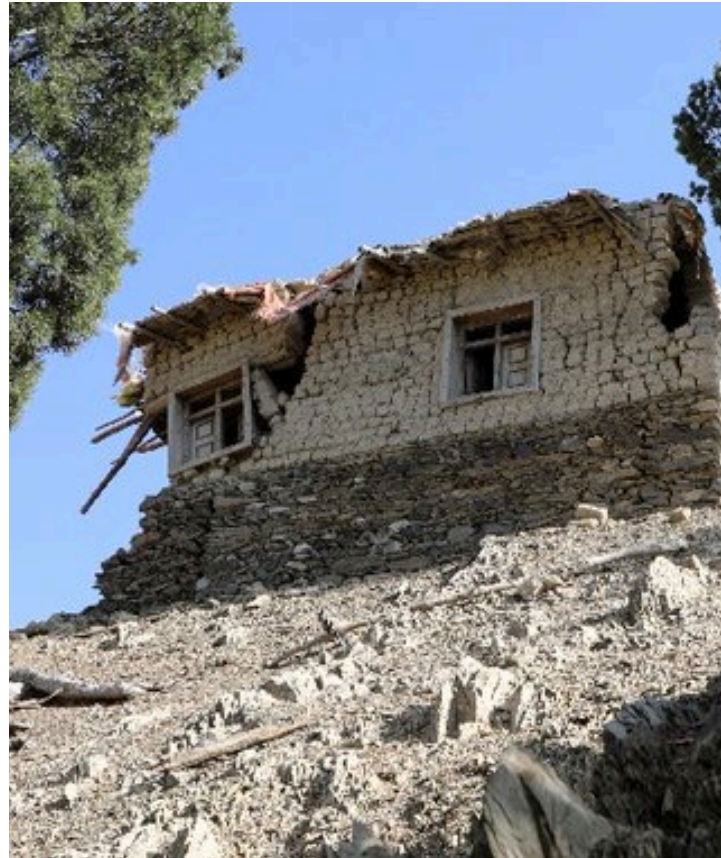
- Accelerated learning
- Early Childhood Development
- Lower Secondary
- Scholarship
- School Improvement Plan
- Teacher training
- Governance
  - Schools Management Committee (SMC) establishment and support
  - Villager Education Committee (VEC) Support and engagement
- Education in Emergency (EiE)

## Humanitarian/ Emergency

- Multi-purpose cash Assistance
- Non-food item (winterization, hygiene)
- Cash for food
- Cash for winter
- Cash for rent
- Shelter upgrade
- Mobile Health Clinics/team



# Needs in Afghanistan



- Education
- Emergency Shelter
- NFI
- Food security and agriculture
- Health
- Nutrition
- Protection
- WASH





## Earthquake Amid Crisis

Afghanistan is already in the grip of an alarming hunger crisis, exacerbated by drought, displacement, skyrocketing food prices, the COVID-19 pandemic, and a catastrophic economic crisis, with nearly 19 million people now facing acute hunger. This earthquake is another devastating blow for the Afghan people who need our support now, more than ever.

# Federico Motka

Head of Emergencies and Humanitarian  
Portfolio

Vitol Foundation



#CDP4Recovery





# Q&A

Submit questions using the Q & A box at the bottom of your screen.

#CDP4Recovery



**Patty McIlreavy**

President and CEO  
Center for Disaster  
Philanthropy



**Hsiao-Wei Lee**

Deputy Country Director for  
Programme and Operations  
World Food Programme,  
Afghanistan



**Federico Motka**

Head of Emergencies and  
Humanitarian Portfolio  
Vitol Foundation



**Haqmal Munib**

Program Quality Coordinator  
CARE Afghanistan



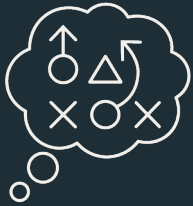


## NEXT STEPS AND ACTIONS

- 1. Support local and established organizations.**
- 2. Fund emergencies and crises.**
- 3. Learn about the rules but don't be afraid.**

Photo Credit: [Joel Heard](#) on [Unsplash](#)

# Expert Resources



## Disaster Philanthropy Playbook



## Website

- Blogs, Issue Insights, Disaster Profiles, Weekly Disaster Updates



## Webinars



## Special Reports

- Measuring the State of Disaster Philanthropy
- COVID-19 and Philanthropy
- U.S. Household Disaster Giving Report



## CDP Staff

- Speaking engagements, Analyses, Opinion Pieces, Consulting Services



**disasterphilanthropy.org**





## OUR NEXT WEBINAR

### **Climate refugees: Supporting receiving communities**

July 14, 2 p.m. ET/1 p.m. CT

[disasterphilanthropy.org/events](https://disasterphilanthropy.org/events)

*U.S. Navy photo by Mass Communication Specialist 3rd Class  
Sean Galbreath*



# Thank You

For additional information, contact:

**Tanya Gulliver-Garcia**

Tanya.Gulliver-Garcia@disasterphilanthropy.org

CONNECT WITH US

DISASTERPHILANTHROPY.ORG

@FUNDS4DISASTER

