

**The webinar
will begin in a
few moments...**

**Please
answer the
poll while
you wait for
the webinar
to begin.**



Photo: [Flickr](#)

**The webinar
will begin in a
few moments...**

**Please
answer the
poll while
you wait for
the webinar
to begin.**

It gets hotter every year: How to proactively fund the heat crisis



Photo credit: Canva

April 11, 2024

CENTER FOR DISASTER PHILANTHROPY





HOW TO PARTICIPATE

Submit questions.

Use Q & A box at the bottom of your screen.

Complete the survey.

The link will open as you exit the webinar.

Live captioning is available now via Zoom. Click on Closed Caption/Live Transcript to access it.

Thank you to our co-sponsors



Land Acknowledgment

“Acknowledgment is a simple, powerful way of showing respect and a step toward correcting the stories and practices that erase Indigenous people’s history and culture and toward inviting and honoring the truth.”

<https://usdac.us/nativeland>

CDP’s Land Acknowledgment is inspired by Dawn Knickerbocker, Native Americans in Philanthropy.



AT THE END OF THE WEBINAR, DONORS WILL:

- **Have a greater understanding of the links between climate change and heat.**
- **Learn how philanthropy can help address heat's impacts globally.**
- **Build awareness of heat's inequitable impacts.**

Photo by [redcharlie](#) on [Unsplash](#)

My Heat Context

TORONTO DISASTER RELIEF COMMITTEE

6 Trinity Square, Toronto, ON M5G 1B1
Phone: 416-599-TDRC (8372) Fax: 416-599-5445
Email: tdrc@tdrc.net Website: www.tdrc.net



Introduction:

My name is Tanya Gulliver and I am on the Management Team of the Toronto Disaster Relief Committee¹. For the past year I have been closely following the issue of heat emergencies including looking at Toronto's Hot Weather Response Plan as



“Climatologists are predicting that the summer of 2007 will be the hottest on record, something I am sure we will hear most years from now on.”

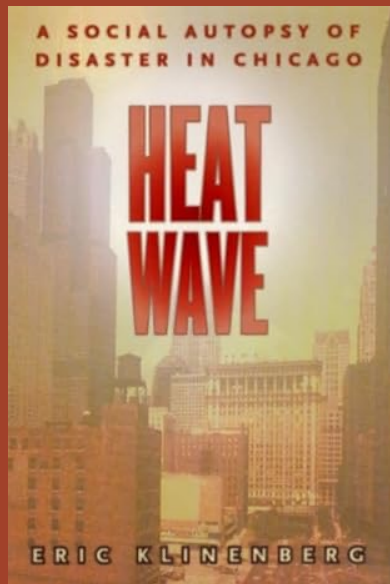
- Tanya Gulliver-Garcia, April 2007

Heat Definitions

- No standardized definition of heat.
- Acclimatization affects how you experience heat (solutions must match reality).
- National Weather Service: “a period of abnormally hot weather generally lasting more than two days.”
- World Meteorological Organization: “five or more consecutive days during which the daily maximum temperature surpasses the average maximum temperature by 5 °C (9 °F) or more.”

Heat History

- July 13-20, 1995 – Chicago, IL
 - 700 people died
 - “Heat Wave: A Social Autopsy of a Disaster In Chicago” by Eric Klinenberg



- June to mid-August 2003
 - Excess mortality 30-70,000 deaths – primarily older adults
 - France and Paris hit the hardest

| Country | Casualties |
|-------------|------------|
| France | 14 082 |
| Germany | 7 000 |
| Spain | 4 200 |
| Italy | 4 000 |
| UK | 2 045 |
| Netherlands | 1 400 |
| Portugal | 1 300 |
| Belgium | 150 |

INSERM: "Surmortalité liée à la canicule de l'été 2003", AP September 25, 2003

Pictures: https://www.unisdr.org/files/1145_ewheatwave.en.pdf and <https://www.amazon.com/Heat-Wave-Autopsy-Disaster-Chicago>

Speakers

Thank you to our guests for joining us today.

#CDP4Recovery



Nidhi Upadhyaya

Deputy Director, Global Policy
and Finance

Atlantic Council's Adrienne
Arsht-Rockefeller Foundation
Resilience Center



Dr. Braden Kay

Extreme Heat Program
Manager

California Governor's Office of
Planning and Research



Joseph Karanja

Bill Anderson Fund Fellow

Arizona State University

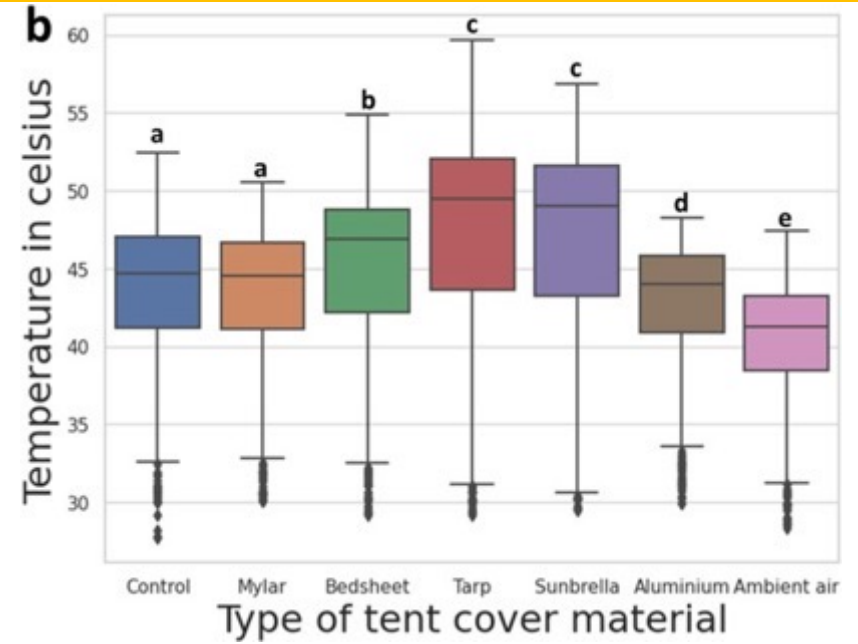
All of Government Approach



- Statewide Heat Action Plan
- Heat Ready CA
- Heat Warning System
- Extreme Heat and Community Resilience Grant Program



Who is most at risk and why?



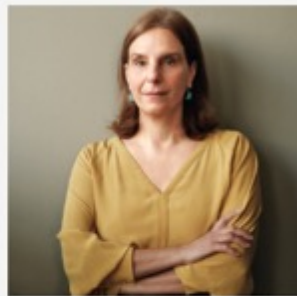
CHIEF HEAT OFFICERS

- Extreme heat poses great risks to cities every year and will continue to worsen going forward.
- As urban population growth continues to rise, so too will the number of people impacted by this threat. By 2050, heat waves will affect more than 3.5 billion people worldwide, affecting human lives and livelihoods.
- To address this danger, Arsht-Rock created and piloted the world's first Chief Heat Officer (CHO) positions.
- These officials are responsible for unifying their city governments' responses to extreme heat. They are charged with accelerating existing heat protection efforts and initiating new work to reduce the risks and impacts of extreme heat for their residents and constituents.



Jane Gilbert

CHIEF HEAT OFFICER, MIAMI,
FLORIDA



Eleni Myrivili

GLOBAL CHIEF HEAT OFFICER,
UN HABITAT & ARSHT-ROCK



Eugenia Kargbo

CHIEF HEAT OFFICER,
FREETOWN, SIERRA LEONE



Elissavet Bargianni

CHIEF HEAT OFFICER, ATHENS,
GREECE



**Krista Milne &
Tiffany Crawford**

CHIEF HEAT OFFICERS,
MELBOURNE, AUSTRALIA



Bushra Afreen

CHIEF HEAT OFFICER, NORTH
DHAKA, BANGLADESH

Action Tracks



Build Public Awareness and Notification

Ex. Heat awareness and education strategies, emergency alerts and early warning, and data accessibility and heat modeling



Strengthen Community Services and Response

Ex. Cooling centers and resilience hubs, community infrastructure, and support for local and regional extreme heat response plans



Increase Resilience of Our Built Environment

Ex. Infrastructure, building retrofit, cool roof and pavement technologies, and air conditioning



Utilize Nature-based Solutions

Ex. Community greening and gardens, urban forestry, and greenbelts



Program Vision

This program will offer planning and implementation grants for heat relief and long-term resilience to extreme heat.

Supporting a statewide movement to build resilience to extreme heat through:

- placemaking & place-keeping
- immediate response & long-term resilience
- job creation
- protecting the health of Californians who are most vulnerable to extreme heat

Program Values

Place and Belonging

Enterprise and Job Creation

Indigenous Land Stewardship

Co-benefits and Systems
Thinking

Inclusion and Language Justice

Support Technology Dev &
Innovative Design

Harm Reduction and Healing

Community Resilience for All
Hazards

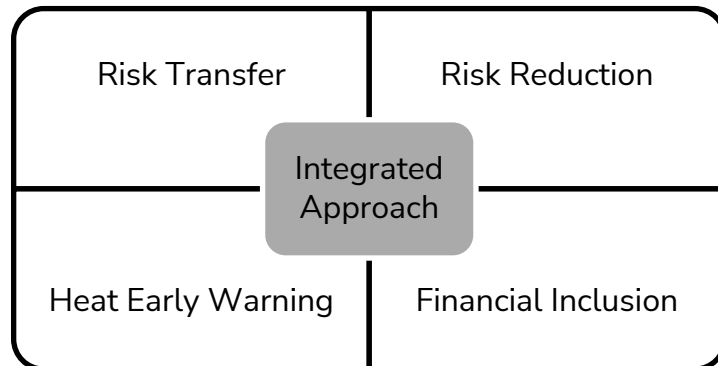
EXTREME HEAT PROTECTION INITIATIVE

With partners SEWA and Blue Marble, we are catalyzing transformation at a global scale to build the resilience of those most vulnerable to the impacts of extreme heat through the **Extreme Heat Protection Initiative**.

THE PROBLEM

Climate change will **nearly double** the number of heat wave days in India from an average of 15 under current conditions to 30 by 2050.

OUR INTEGRATED APPROACH



GENERAL PROJECT DETAILS



21,000 women in India



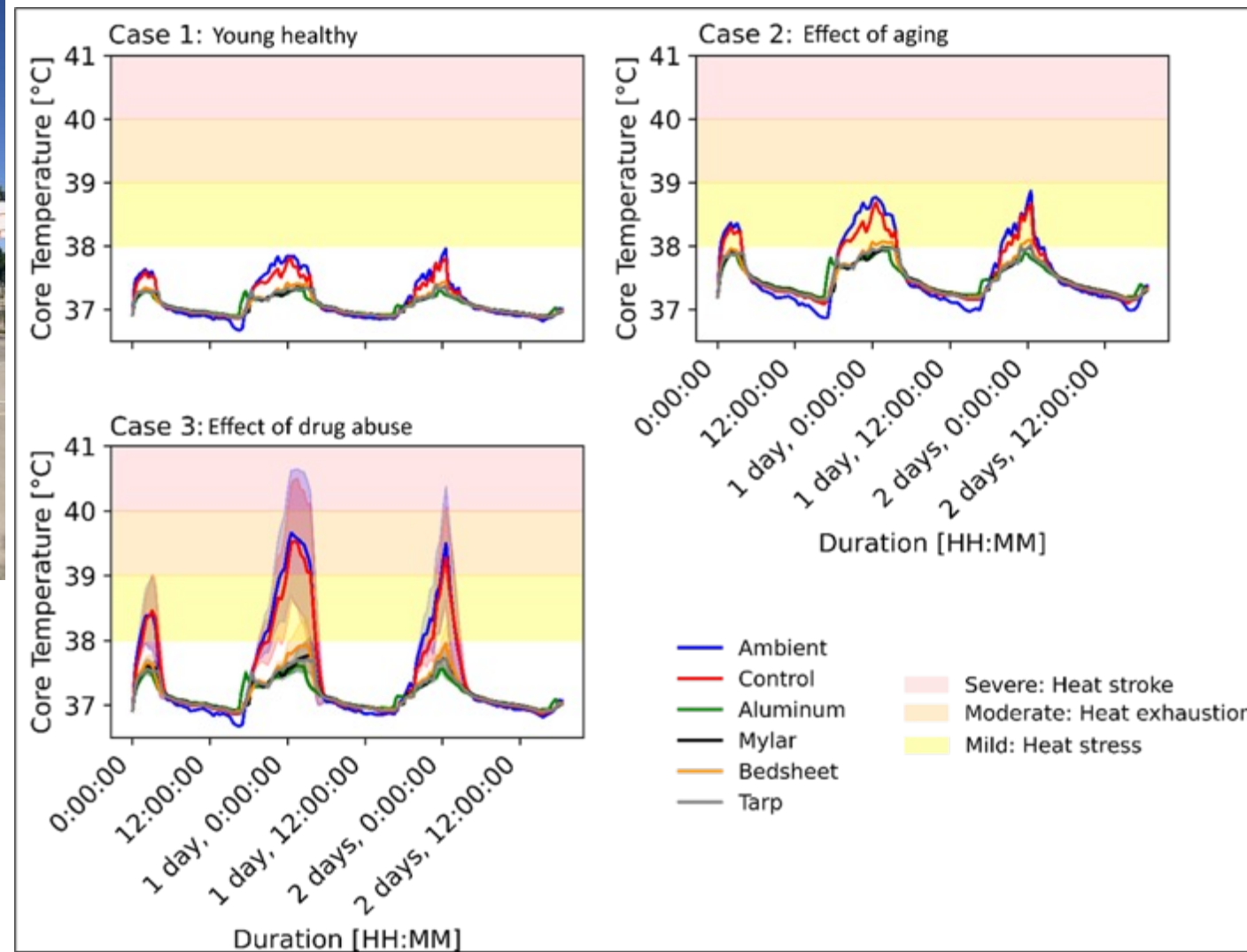
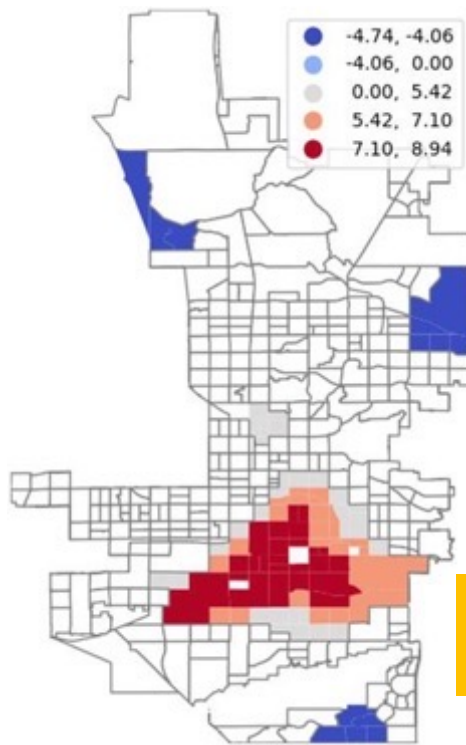
World's first parametric insurance aimed at recovering lost wages due to climate-driven extreme heat

Atlantic Council

Adrienne Arsht-Rockefeller Foundation Resilience Center



Blue Marble



How are people uniquely affected?



Hazards Concurrence

COP28 CALL FOR COLLABORATION

- The Call for Collaboration is an opportunity for the public and private sectors to come together to accelerate investment in and action for climate resilience.
- The financial system has the potential to drive transformational change towards climate-resilient countries, communities, businesses, and natural ecosystems.
- In 2023, Arsht-Rock conducted 7 roundtables with banking, insurance and investment, country delegates and public finance institutions, 6 webinars to formulate key policy messages around private finance needs to accelerate existing solutions.

CALL FOR COLLABORATION

Enhancing the enabling
environment to
accelerate the
mobilisation of private
finance for adaptation
and resilience

Implementation Grants

Track A: Build Public Awareness and Notification

- Neighborhood resilience events
- Educational programming
- Assistance applying for and receiving community services
- “Cool Buddy” programs
- Placemaking projects and informational signage
- Art and culture projects for awareness
- Youth empowerment and leadership
- Public awareness camp

Track B: Strengthen Community Services and Response

- Mutual Aid
- Basic first aid training
- Heat survival packs
- Home energy saving toolkits
- Community Resilience Center Activities
- Transportation to/from community resources during heat events
- Environmental monitoring systems
- Apprenticeships

Implementation Grants

Track C: Increase Resilience of our Built Environment

- Cool and smart surfaces
- Shade structures
- Water fountains
- Splash pads
- Transit shelters (shade and cooling enhanced)
- Active and passive cooling infrastructure in key community buildings and resilience hubs
- Cool home pilot projects

Track D: Utilize Nature-based Solutions

- Tree planting
- Residential tree program
- Tiny forests
- Cool community gardens
- Green stormwater infrastructure pilots
- Nature-based playgrounds or shaded playgrounds
- Cool ecosystems work
- Maintenance for nature-based solutions



HEAT REGISTRIES

A Guide for Helping Vulnerable
People During Extreme Heat

2012

NEXT STEPS FOR FUNDERS

Create a local plan and staff it!

**Include at-risk communities in
planning and response.**

**Consider the other impacts of
extreme heat in your community
and the world.**

Photo credit: Tanya Gulliver-Garcia

Expert Resources



Disaster Philanthropy Playbook



Website

- Blogs, Issue Insights, Disaster Profiles, Weekly Disaster Updates



Webinars



Special Reports

- Measuring the State of Disaster Philanthropy
- COVID-19 and Philanthropy
- U.S. Household Disaster Giving Report



CDP Staff

- Speaking engagements, Analyses, Opinion Pieces, Consulting Services



disasterphilanthropy.org



OUR UPCOMING WEBINAR

Corporate Disaster Philanthropy

May 9, 2024, at 1 p.m. ET/12 p.m. CT

disasterphilanthropy.org/events

Photo by [Adeolu Eletu](#) on [Unsplash](#)

Thank You

For additional information, contact:

Tanya Gulliver-Garcia

Tanya.Gulliver-Garcia@disasterphilanthropy.org

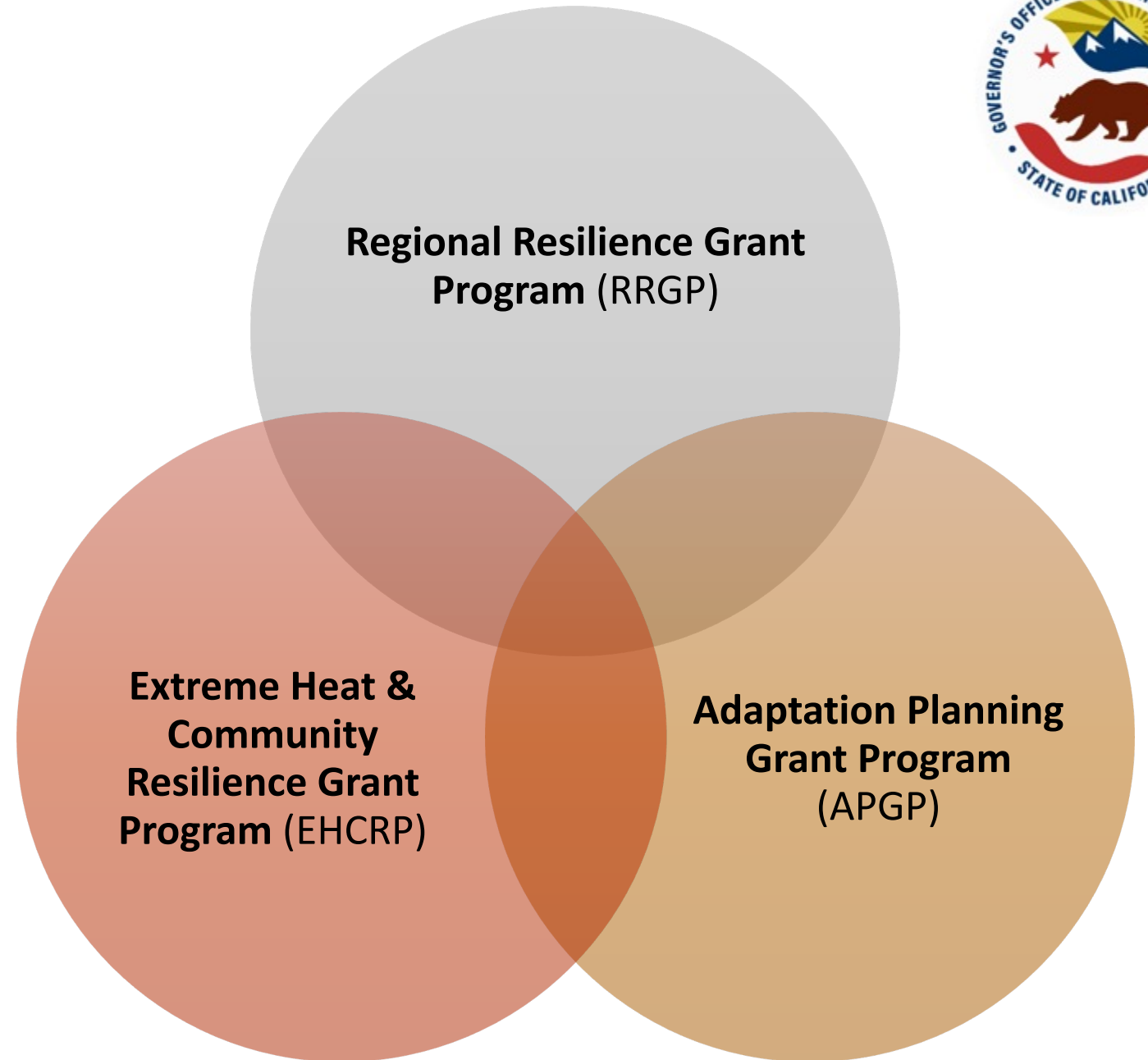
CONNECT WITH US

DISASTERPHILANTHROPY.ORG

@FUNDS4DISASTER



ICARP Grant Programs



Moving Forward



Radical Inclusion

Demonstrate inclusion through deep investment in language justice, racial equity-centered approaches, LGBTQ+ centered programs, indigenous knowledge informed design and solutions focusing on access and functional needs communities



Holistic Community Resilience

Use data and vulnerability assessments while enhancing existing assets and practices that support community connections and using existing skills and knowledge.



New Economy Workforce Development

Fund projects that support solutions that create work in indigenous land stewardships, the healing arts and social work, and creative facilitation and art/culture making.



Permanently-funded Landscape Transformation

In addition to funding pilot projects we need changes in building codes and landscape/stormwater standards, while investing in infrastructure by creating long-term funding streams (i.e. Tucson Storm to Shade program)

Overview

Small Planning Grants

\$100,000-\$250,000

\$3 Million Total

Small Implementation Grants

\$100,000-\$450,000

\$3 Million Total

Large Planning Grants

\$300,000-\$750,000

\$5 Million Total

Large Implementation Grants

\$500,000-\$4 Million

\$9 Million Total