

**The webinar
will begin in a
few moments...**

**Please
answer the
poll while
you wait for
the webinar
to begin.**



Photo: [Flickr](#)

**The webinar
will begin in a
few moments...**

**Please
answer the
poll while
you wait for
the webinar
to begin.**

U.S. severe weather: How funders can support recovery



Photo: Flooding in Texas, May 6, 2024. (Credit: Texas Division of Emergency Management via [X](#))

June 27, 2024

CENTER FOR DISASTER PHILANTHROPY





HOW TO PARTICIPATE

Submit questions.

Use Q & A box at the bottom of your screen.

Complete the survey.

The link will open as you exit the webinar.

Live captioning is available now via Zoom. Click on Closed Caption/Live Transcript to access it.

Thank you to our co-sponsors



Land Acknowledgment

“Acknowledgment is a simple, powerful way of showing respect and a step toward correcting the stories and practices that erase Indigenous people’s history and culture and toward inviting and honoring the truth.”

<https://usdac.us/nativeland>

CDP’s Land Acknowledgment is inspired by Dawn Knickerbocker, Native Americans in Philanthropy.

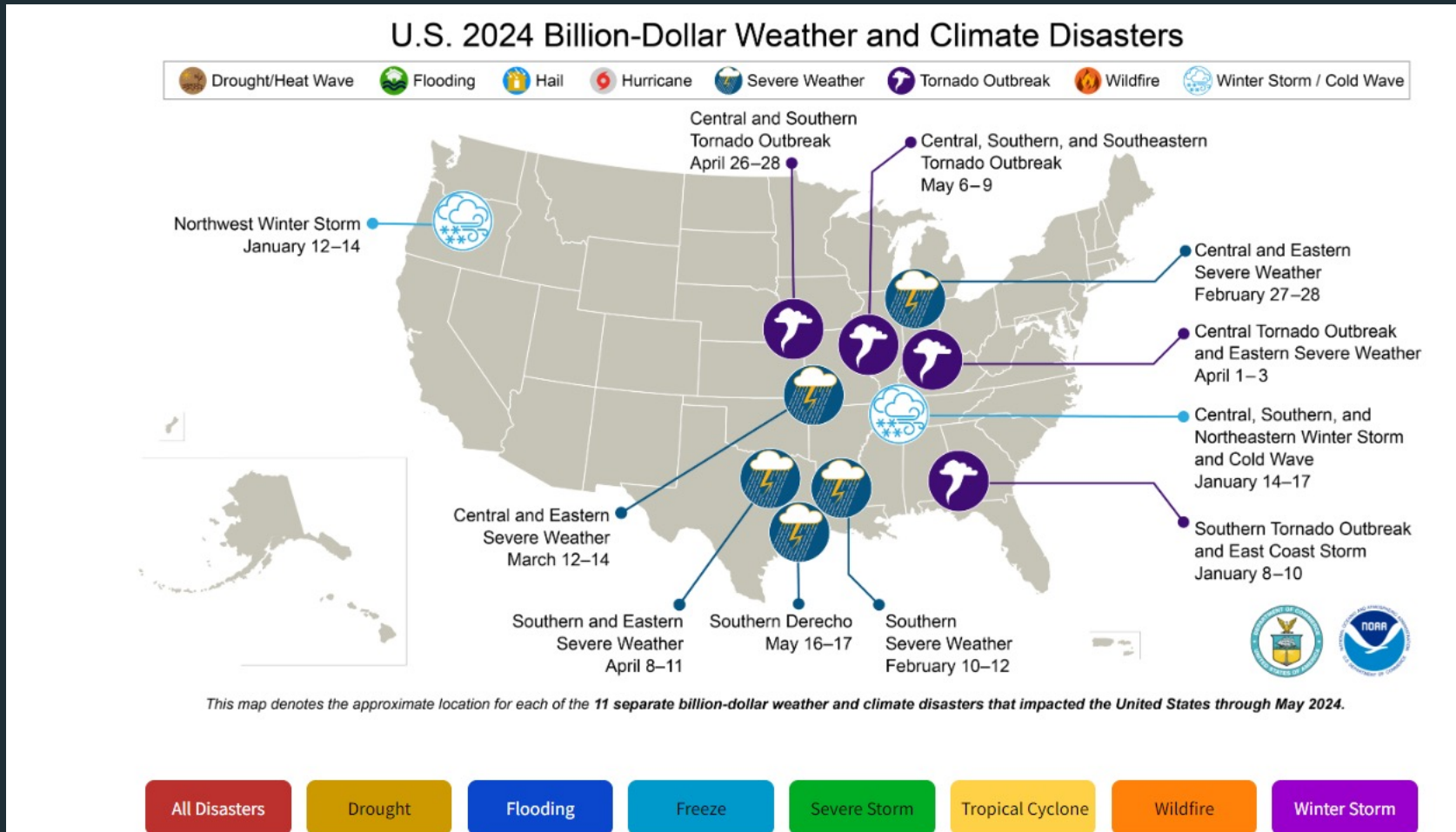


AT THE END OF THE WEBINAR, DONORS WILL:

- **Understand the connection of climate change to this year's severe weather.**
- **Learn how to plan your emergency giving strategy before a disaster hits.**
- **Understand how to address root causes that make marginalized populations more at risk from the impacts of severe weather so they can recover quicker and more equitably from disasters.**

Photo: Storm damage in Texas, May 18, 2024. Credit: Office of Commissioner Lesley Briones via [X](#)

Billion-dollar disasters as of May 2024 – 11 disasters



Speakers

Thank you to our guests for joining us today.

#CDP4Recovery



Barb Mayes-Boustead

NOAA Coordinator for the
Climate Ready Nation
Initiative



Amy Carol Dominguez

Program Director, Crisis
Emotional Care Team
Vibrant Emotional Health



Thomasina Burns

Co-Executive Director
Houston Responds



Kari McCann Boutell

President
Iowa Council on
Foundations

Community Stress Load Threshold

A country or community's capacity to absorb the shock of a chronic disaster, such as a pandemic or war, depends on the foundational issues and stressors already present. It can be difficult to recover on its own when a community accumulates stressors that bring it to a tolerance limit.

Measure the Cumulative Stress Load in a Community

Acute Stressors

Health, economic, and environmental crises; police-community conflicts (**Disaster 1 & 2**)

Chronic Stressors

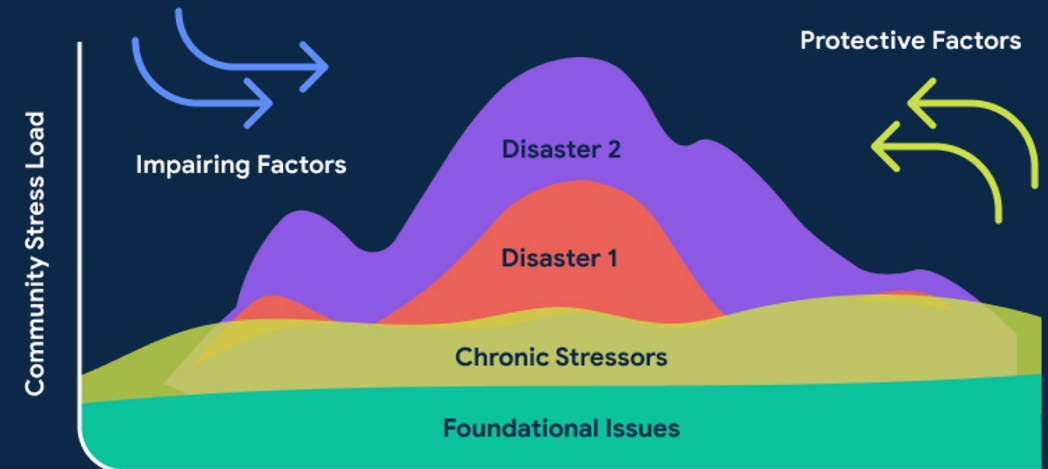
Community violence, war, low income/resources, poor population health, housing instability, lack of political representation, and population loss

Foundational Issues

Unemployment, low trust in institutions, intergenerational poverty, racism and discrimination as examples

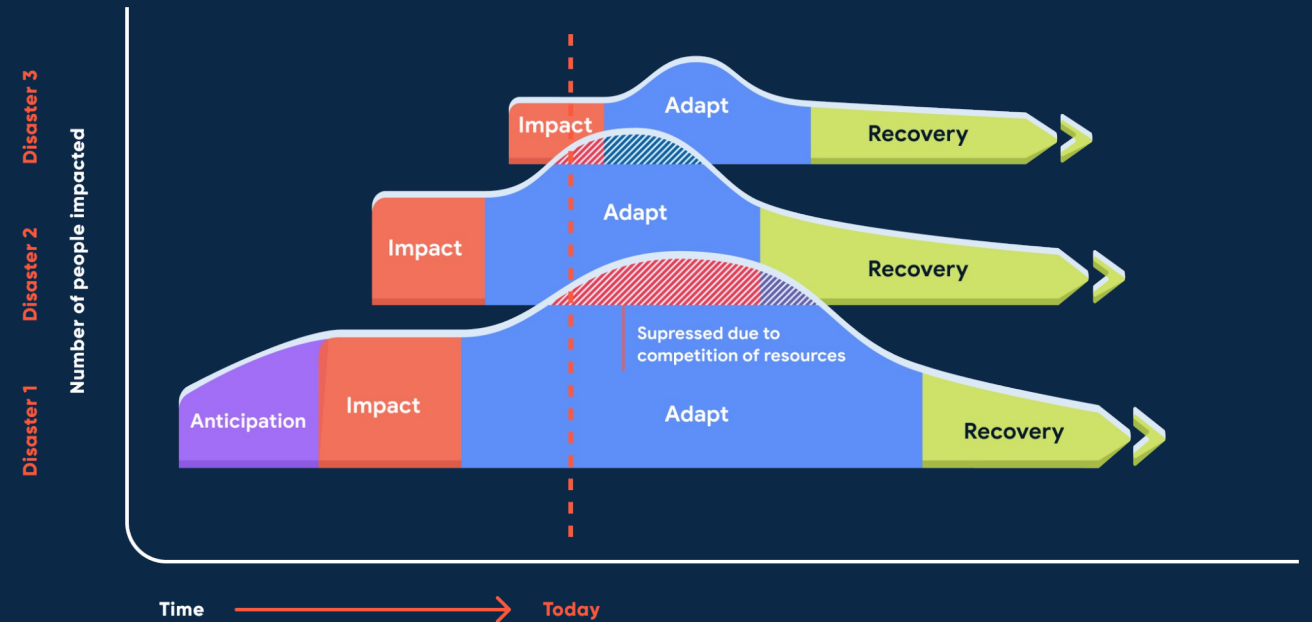
Mitigating the Cumulative Stress Load in a Community

Stakeholders can strengthen **Protective Factors** and address **Impairing Factors** to stay below the load threshold.



Community Balance Sheet

Communities may have ongoing disasters that can result in decreased resources. When survivors, responders and other community members work together, within each phase, these overlaid crises can be decreased to improve the community's ability to problem solve and recover.





NEXT STEPS FOR FUNDERS

Network beyond your usual partners.

Strengthen the capacity of communities – both hard infrastructure and organizations.

Recognize the need for increased investments.

Photo: Texas Game Wardens assist with evacuation and rescue operations following flooding in central and east Texas, May 2, 2024. Credit: Texas Game Warden via [X](#)

Expert Resources



Disaster Philanthropy Playbook



Website

- Blogs, Issue Insights, Disaster Profiles, Weekly Disaster Updates



Webinars



Special Reports

- Measuring the State of Disaster Philanthropy
- COVID-19 and Philanthropy
- U.S. Household Disaster Giving Report



CDP Staff

- Speaking engagements, Analyses, Opinion Pieces, Consulting Services



disasterphilanthropy.org



OUR UPCOMING WEBINAR

#NoNaturalDisasters: Changing the narrative on disasters for philanthropy

July 11 at 1 p.m. ET/12 p.m. CT

disasterphilanthropy.org/events

Aerial survey of damage in northern Puerto Rico after Hurricane Maria, Sept. 26, 2017 . [U.S. Air Force photo](#) by Airman 1st Class Nicholas Dutton

Thank You

For additional information, contact:

Tanya Gulliver-Garcia

Tanya.Gulliver-Garcia@disasterphilanthropy.org

CONNECT WITH US

DISASTERPHILANTHROPY.ORG

@FUNDS4DISASTER

