

The webinar
will begin in a
few moments...

Please
answer the
poll while
you wait for
the webinar
to begin.



The webinar
will begin in a
few moments...

Please
answer the
poll while
you wait for
the webinar
to begin.

Photo: [Flickr](#)

Feminist humanitarian funding approaches in climate and disaster crises

August 8, 2024

CENTER FOR DISASTER PHILANTHROPY



Women attend a session led by the Forum for Women in Development, Democracy and Justice (FODDAJ) in Taruwes Village, Kajiado East, Kenya. Photo courtesy of [FODDAJ](#)

CDP

HOW TO PARTICIPATE

Submit questions.

Use Q & A box at the bottom of your screen.

Complete the survey.

The link will open as you exit the webinar.

Live captioning is available now via Zoom.

Click on Closed Caption/Live Transcript to access it.

Photo credit: [Atlanta Wealth Building Initiative](#)



Thank you to our co-sponsors



Land Acknowledgment

“Acknowledgment is a simple, powerful way of showing respect and a step toward correcting the stories and practices that erase Indigenous people’s history and culture and toward inviting and honoring the truth.”

<https://usdac.us/nativeland>

CDP’s Land Acknowledgment is inspired by Dawn Knickerbocker, Native Americans in Philanthropy.



AT THE END OF THE WEBINAR, DONORS WILL:

- **What a feminist humanitarian approach means.**
- **The challenges and structural inequities in the current, mainstream humanitarian response structure.**
- **How donors can incorporate feminist principles and approaches in their grantmaking.**



How we define the term 'feminist'

- Being intersectional, inclusive, holistic, collaborative, and committed.
- Putting women and girls (all self-identifying women and girls) and gender-diverse people at the centre.
- Ensuring dignity of women, girls and gender diverse people; driving transformation, dismantling patriarchy; and challenging exclusion.
- Leaving no-one behind, ensuring safety and safe spaces, and accountability and transparency.
- Recognising power dynamics, and taking action to address them, to shift power where necessary, and always using power responsibly.
- Being self-reflective, and open to adapting and changing, to ensure feminist principles are consistently upheld.
- Working together as a movement for the rights of women, girls and gender diverse people; for human rights; and justice for all.

A feminist humanitarian system:

- Is collectively and unwaveringly committed to achieving gender justice, recognising and responding to the systemic drivers of inequality, and using emergencies as catalysts to advance the rights of women, girls and gender diverse people
- Acknowledges the patriarchal and colonial dynamics within itself, that often exclude or downplay the contribution of those identifying as women and minorities, particularly those from the Global South
- Takes responsibility for identifying unjust formal and informal power relations within itself by regularly critiquing the extent to which its structures and processes reinforce patriarchal power relations through humanitarian action
- Actively shifts power to women-led organisations working in humanitarian contexts in the Global South by ensuring that they are resourced and consistently included, and that their leadership is recognised and made central in shaping the humanitarian system
- Facilitates safe spaces through its coordination mechanisms, wherein actors working at all levels can be heard, and the expertise of diverse responders, including those identifying as women, is looked up to
- Recognises that there is no one-size-fits-all approach, thereby ensuring that nobody is left behind.



Speakers

Thank you to our guests for joining us today.

#CDP4Recovery



Anzhelika Bielova

President

**Voice of Romni
Women**



Dr. PeiYao Chen

President and CEO

Global Fund for Women



Nadella Oya

**Founder and Director
of createfuturegood**

**Interim Chair of the
Caribbean Gender
Alliance**



mainstream humanitarian response vs. feminist humanitarian response

External interventions

Shorter-term relief of the symptoms of crises

Return to normal

Neutrality / Impartiality

Center crisis-affected communities and women-led organizations in decision-making

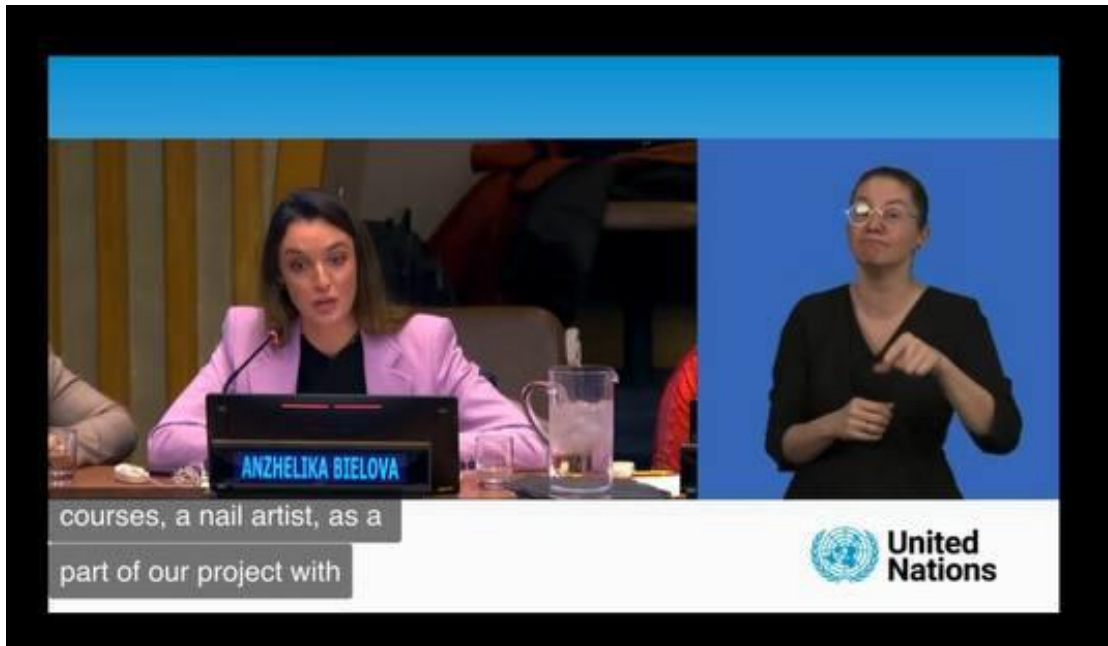
Longer-term investment for community resilience against future crises

Transform the power hierarchies and structural inequality that drive crises

Support gender equality, the rights of women and the LGBTQI+ community

Complementing and cooperating, not competing





Reconceptualize risks in a crisis setting

Leaving no one behind

Timely response to community needs

Fiduciary

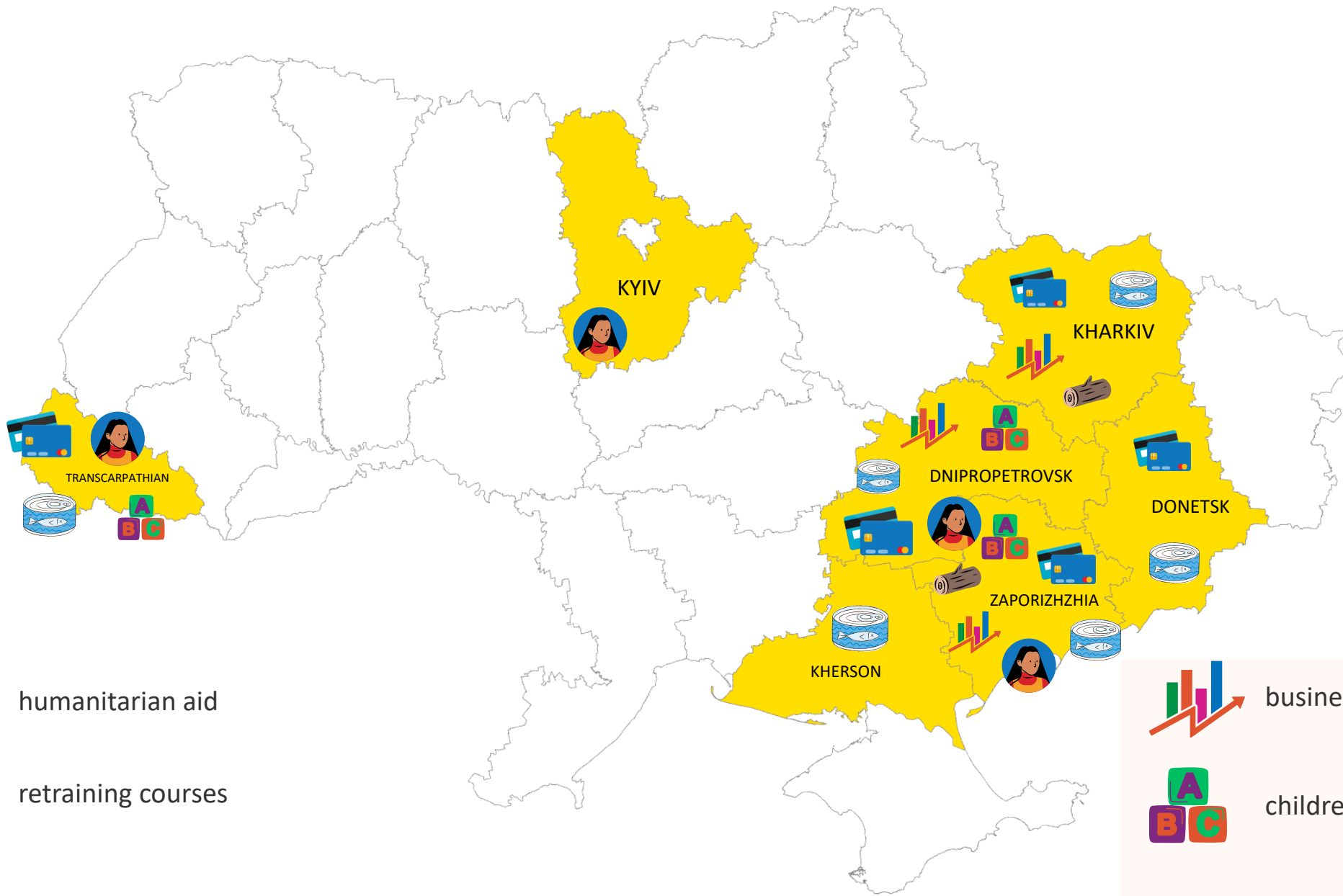
Reputation

Contributing to sustainability & long-term resilience

Transforming existing power hierarchy and inequality

Disasters in the Caribbean context





humanitarian aid



retraining courses



financial assistance



business development



children's spaces



preparation for winter

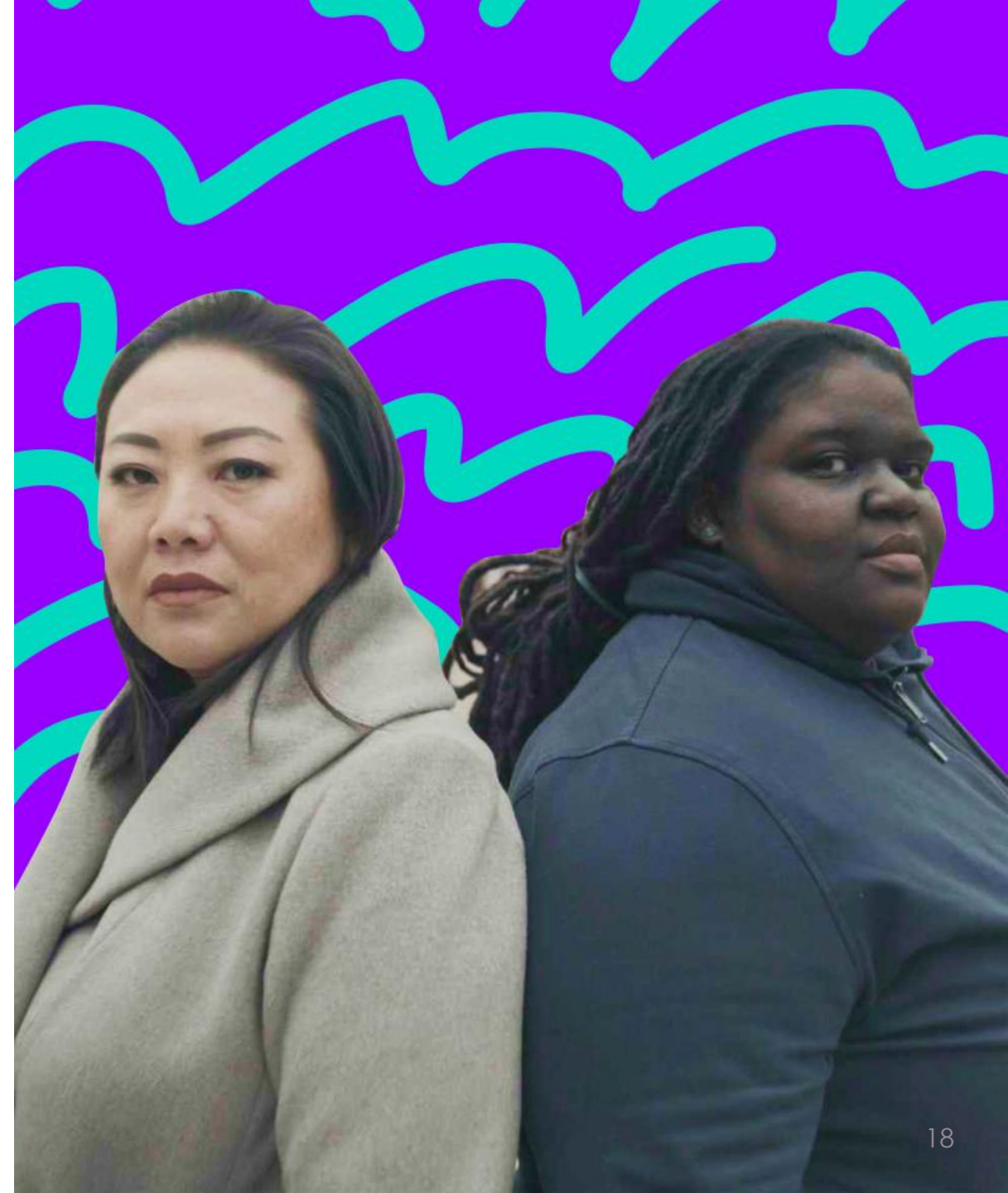


createfuturegood



Applying feminist principles to funding

- Expand the definition of crisis.
- Center those impacted by crises in designing crisis response.
- Understand crisis response as a pathway to gender transformative change.
- Practice flexibility.
- Allow for shifting priorities as crises evolve.
- Support crises that do not make headlines.
- Fund local feminist organizations and feminist funds.





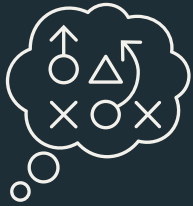
NEXT STEPS AND ACTIONS

Recognize the value in supporting women, girls and gender diverse communities.

Reach out to potential partners and allies to learn more.

Increase funding to organizations supporting and led by women, girls and gender diverse communities.

Expert Resources



Disaster Philanthropy Playbook



Website

- Blogs, Issue Insights, Disaster Profiles, Weekly Disaster Updates



Webinars



Special Reports

- Measuring the State of Disaster Philanthropy
- COVID-19 and Philanthropy
- U.S. Household Disaster Giving Report



CDP Staff

- Speaking engagements, Analyses, Opinion Pieces, Consulting Services



disasterphilanthropy.org



UPCOMING WEBINARS

September – No Webinar

October 10 – Disaster Risk Reduction

November 14 – Chat with Futurist Trista Harris

disasterphilanthropy.org/events

Photo from [Internews](#)

Thank You

For additional information, contact:

Tanya Gulliver-Garcia

Tanya.Gulliver-Garcia@disasterphilanthropy.org

CONNECT WITH US

DISASTERPHILANTHROPY.ORG

@FUNDS4DISASTER

