

**The webinar
will begin in a
few moments...**

**Please
answer the
poll while
you wait for
the webinar
to begin.**



**The webinar
will begin in a
few moments...**

**Please
answer the
poll while
you wait for
the webinar
to begin.**

Photo: [Flickr](#)

Destructive and unexpected: What funders should know about wildfire recovery

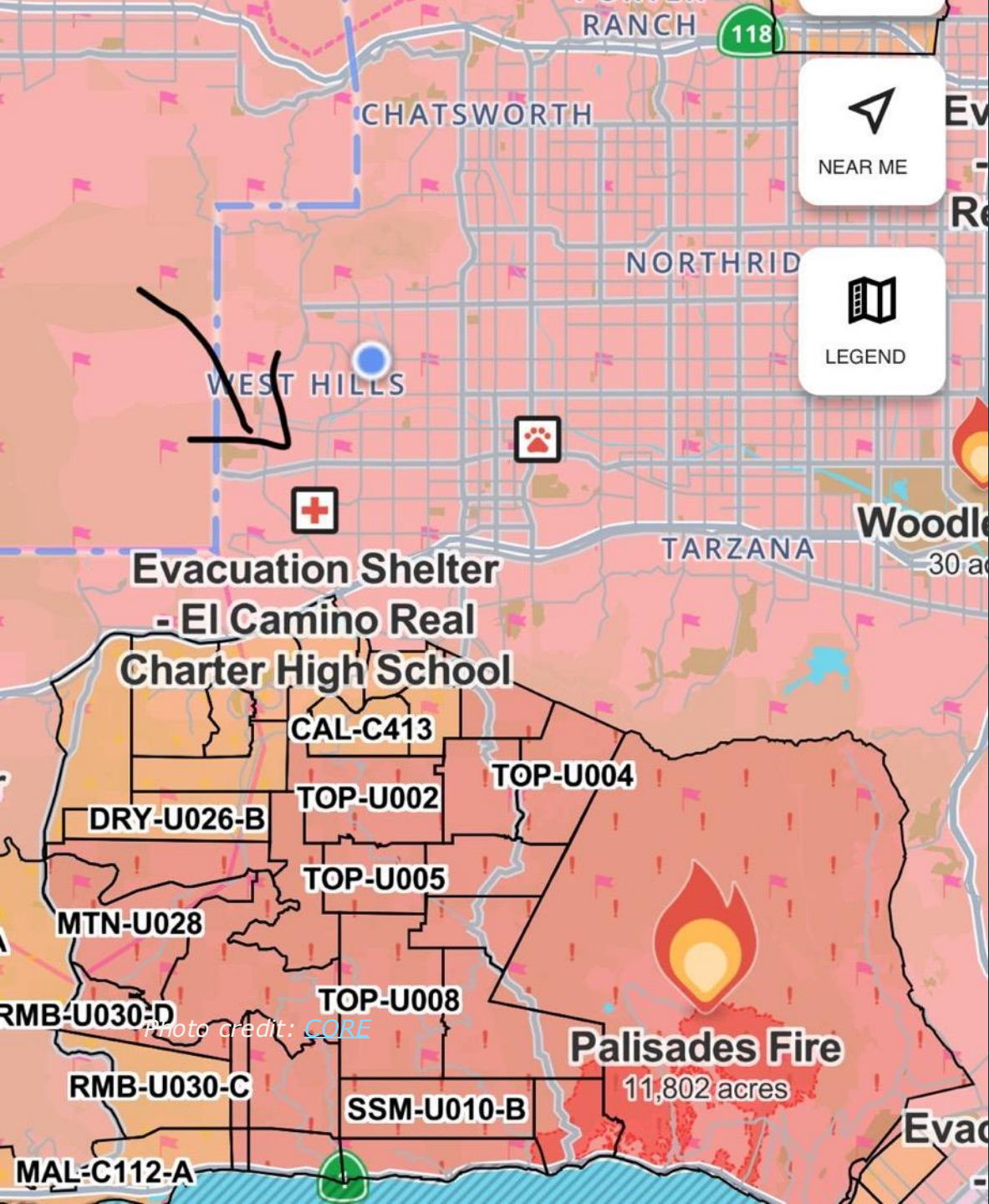


Wildfire damage in Los Angeles. (Credit: [Jesse Rodriguez](#))

February 13, 2025

CENTER FOR DISASTER PHILANTHROPY





HOW TO PARTICIPATE

Submit questions.

Use Q & A box at the bottom of your screen.

This webinar is being recorded.

Available on YouTube channel and website

Live captioning is available.

Click on Closed Caption/Live Transcript to access it.

Complete the survey.

The link will open as you exit the webinar.

Thank you to our co-sponsors!



Land Acknowledgment

“Acknowledgment is a simple, powerful way of showing respect and a step toward correcting the stories and practices that erase Indigenous people’s history and culture and toward inviting and honoring the truth.”

<https://usdac.us/nativeland>

CDP’s Land Acknowledgment is inspired by Dawn Knickerbocker, Native Americans in Philanthropy.



AT THE END OF THE WEBINAR, DONORS WILL:

- Appreciate how past disasters in California can influence recovery in 2025.
- Learn how the diversity of California's population will impact who can access aid.
- Understand how California's housing and insurance crisis will create challenges.

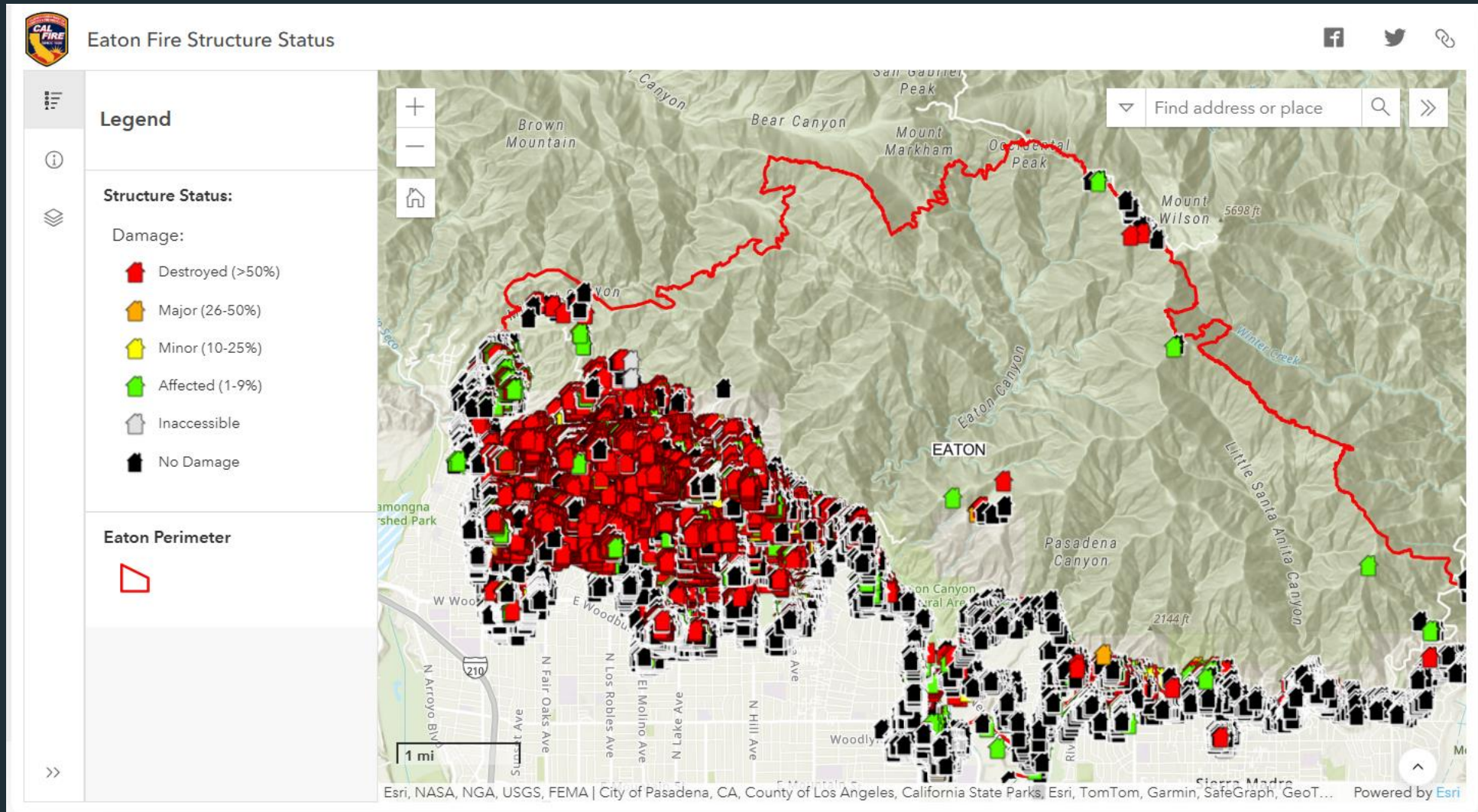
Photo credit: [CORE](#)

California Wildfires: January 1 - February 11, 2025

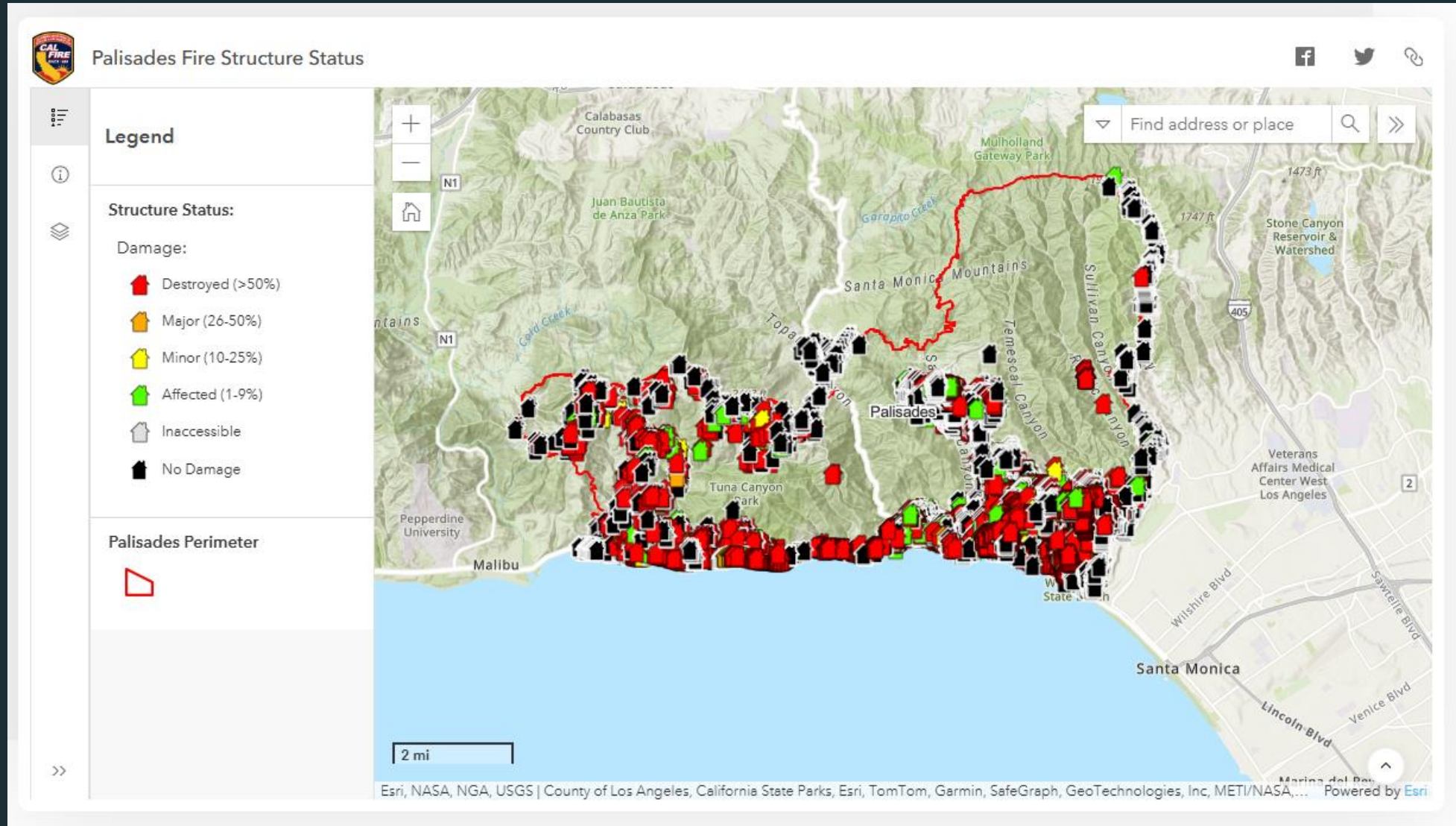


Sources: [CalFire](#) and [FEMA](#)

Eaton Fire



Palisades Fire



Speakers



Nina Knierim

California Area Manager
for Climate Resilience and
Disaster Preparedness

CORE - Community Organized
Relief Effort



Katie Simmons

Deputy Chief Administrative
Officer

Butte County Administration



Dr. Rosemary Veniegas

Director of Health Programs

California Community
Foundation

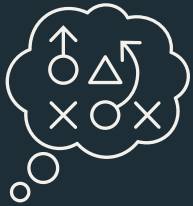


NEXT STEPS AND ACTIONS

1. Identify and support at-risk populations.
2. Carry out localized grantmaking.
3. Implement innovative strategies.

Photo credit: [CORE](#)

Expert Resources



Disaster Philanthropy Playbook



Website

- Blogs, Issue Insights, Disaster Profiles, Weekly Disaster Updates



Webinars



Special Reports

- Measuring the State of Disaster Philanthropy
- COVID-19 and Philanthropy
- U.S. Household Disaster Giving Report



CDP Staff

- Speaking engagements, Analyses, Opinion Pieces, Expert Advisory Services



disasterphilanthropy.org



OUR UPCOMING WEBINAR

Disaster preparedness: Why funding before a disaster is crucial

March 13 at 1 p.m. ET/12 p.m. CT

disasterphilanthropy.org/events

*The distribution line at Culture Aid NOLA's July Supply event.
Credit: [James Cullen](#)*

Thank You

For additional information, contact:

Tanya Gulliver-Garcia

Tanya.Gulliver-Garcia@disasterphilanthropy.org

CONNECT WITH US

DISASTERPHILANTHROPY.ORG

@FUNDS4DISASTER

