

The webinar will begin in a few moments...

**Please
answer the
poll while
you wait for
the webinar
to begin.**



**Please
answer the
poll while
you wait for
the webinar
to begin.**

Photo: [Flickr](#)

Supporting communities in crisis: Evidence on funder motivations, barriers and opportunities

April 15, 2026

CENTER FOR DISASTER PHILANTHROPY

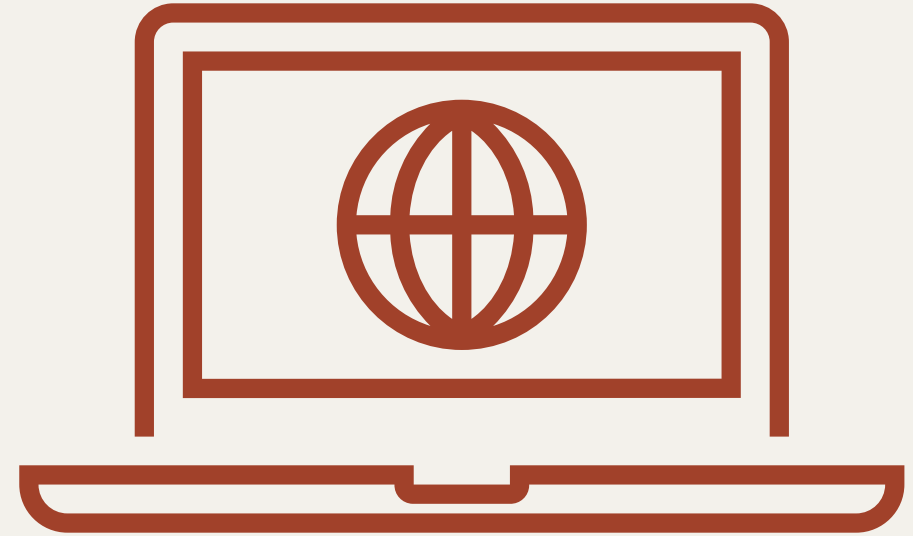


Photo: Tom Remp



How to participate

- Live captioning is available.
- Complete the survey.
- Use the Q&A box at the bottom of your screen to submit questions.



Thank you to our promoters!



Speakers



Austin Snowbarger

Director of Strategy and
Research

Center for Disaster
Philanthropy



Marina Kobzeva

Consultant

Accountable Now



Jason Chau

Senior Program Officer
Emergency Response

Gates Foundation



Gloria Doñate

Head of Humanitarian Aid

Irene M. Staehelin
Foundation



Philanthropy Isn't Indifferent, It's Uncertain: Understanding Philanthropic Funding in Complex Humanitarian Emergencies

Barriers, Motivations, and Opportunities for Engagement
December 2025

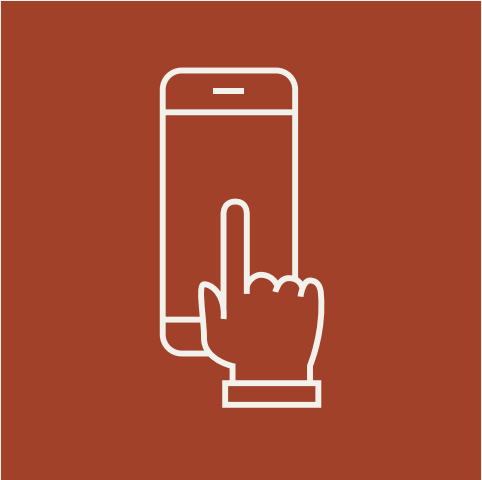
Understanding complex humanitarian emergencies



It's not just one disaster, but a situation where multiple problems overlap, making it harder to respond and recover.

Characteristics of complex humanitarian emergencies (CHE)

Research methodology



Secondary review

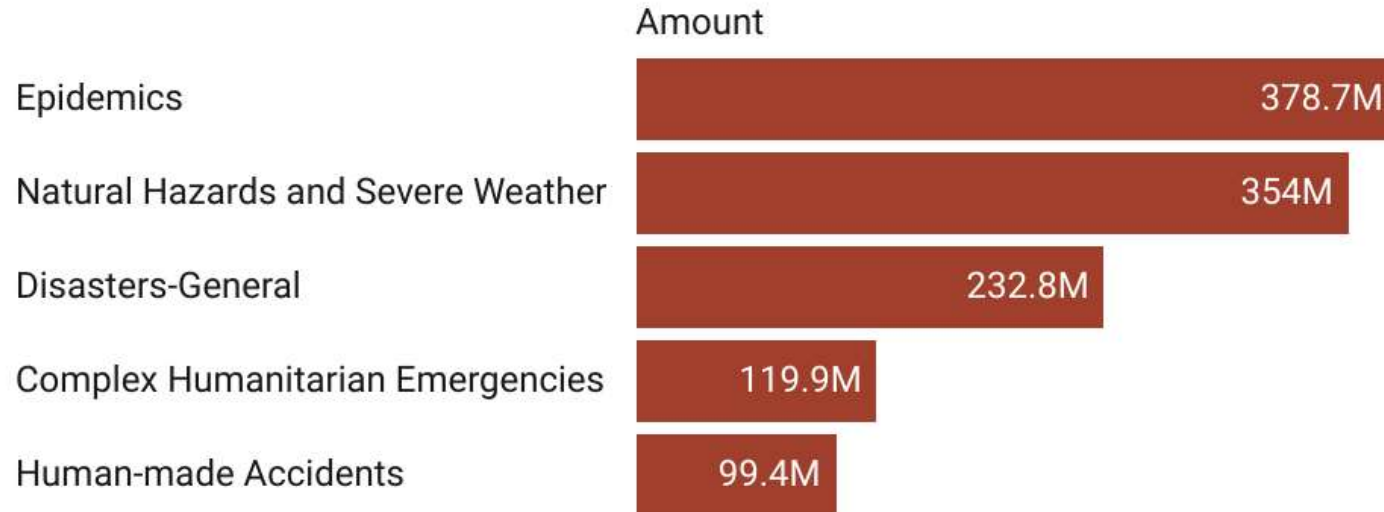


Survey



Interviews

Philanthropic Funding by Disaster Type in 2023



The share of funding for complex humanitarian emergencies declined

Driven by unprecedented funding for the Ukraine humanitarian crisis, complex humanitarian emergencies (CHEs) received 17.4% of overall giving in 2022.

At \$119.9M, the share of funding for CHEs declined to 10.1% in 2023.

Based on Candid data as of April 2025

Chart: Center for Disaster Philanthropy • Source: Candid • Created with Datawrapper



CURRENT SUPPORT FOR CHEs

Lacks dedicated portfolios

Features funders primarily supporting familiar sectors

Demonstrates desire to support local organizations

What motivates funders to engage?

1

**Proximity,
identity and
connection**

2

**Legacy, strategy
and mission**

3

Peer influence

What prevents new or expanded funding?

1

Uncertainty

2

**Communication
gap**

3

**Reputational
concerns**

Solutions for philanthropic engagement in CHEs

Funders want:

- Narrative-based engagement highlighting local leadership
- Trusted intermediaries who can vet partners and manage risk
- Alignment with existing mission priorities
- Collaborative funding models
- Clear pathways to local actors
- Simple, honest risk guidance
- Peer learning spaces where candid conversation is possible

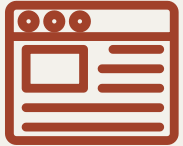


NEXT STEPS FOR FUNDERS

- 1. Consider how your mission aligns with crisis contexts.**
- 2. Learn with peers by joining a coalition or network.**
- 3. Manage risk through collaboration and working with trusted intermediaries.**

Photo credit: *NEXUS Somalia*

Expert Resources



Disaster Updates

- Weekly “What we’re watching” post
- Disaster profiles
- Blog posts on topical issues



Recovery Funds

- Long-term recovery focus
- Community-driven, equity-focused and holistic grantmaking



Expert Advisory Services

- Real-time disaster giving guidance
- Disaster giving planning
- Organizational curriculum planning and delivery



Resources

- Issue insights
- Research and evaluations
- Webinars



Coalition Building

- Bring funders together to collaborate, learn and take coordinated action

disasterphilanthropy.org



OUR NEXT WEBINAR

Beyond the headlines: What mobilizes philanthropy to act in complex crises

May 7, 2026, at 9 a.m. ET/8 a.m. CT/
1 p.m. GMT

disasterphilanthropy.org/events

Thank You

For additional information or questions, contact:

Austin Snowbarger

austin.snowbarger@disasterphilanthropy.org

CONNECT WITH US

DISASTERPHILANTHROPY.ORG

@CENTER4DISASTERPHILANTHROPY

