

The webinar will begin in a few moments...

**Please
answer the
poll while
you wait for
the webinar
to begin.**



**Please
answer the
poll while
you wait for
the webinar
to begin.**

Photo: [Flickr](#)

Beyond the headlines: What mobilizes philanthropy to act in complex crises



Photo: Mahmoud Sulaiman on Unsplash

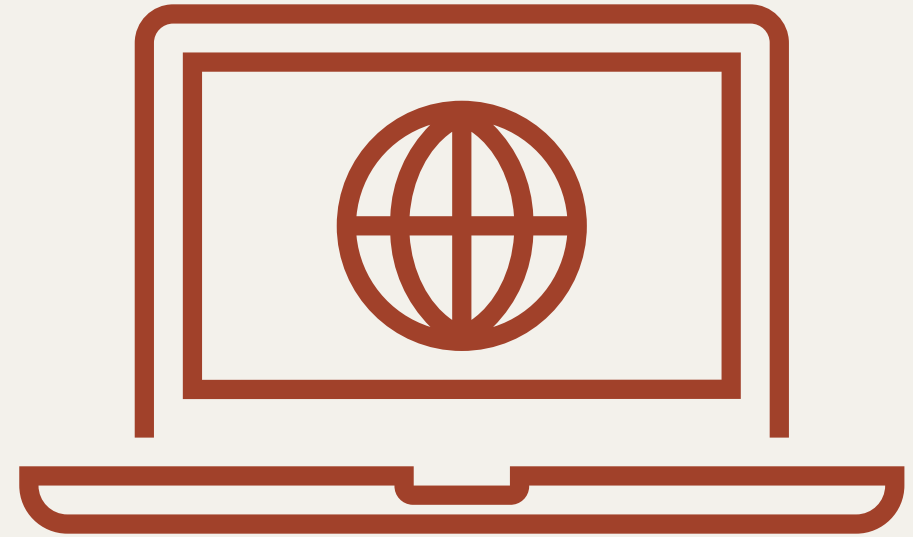
May 7, 2026

CENTER FOR DISASTER PHILANTHROPY



How to participate

- Live captioning is available.
- Complete the survey.
- Use the Q&A box at the bottom of your screen to submit questions.



Thank you to our promoters!





WEBINAR GOALS

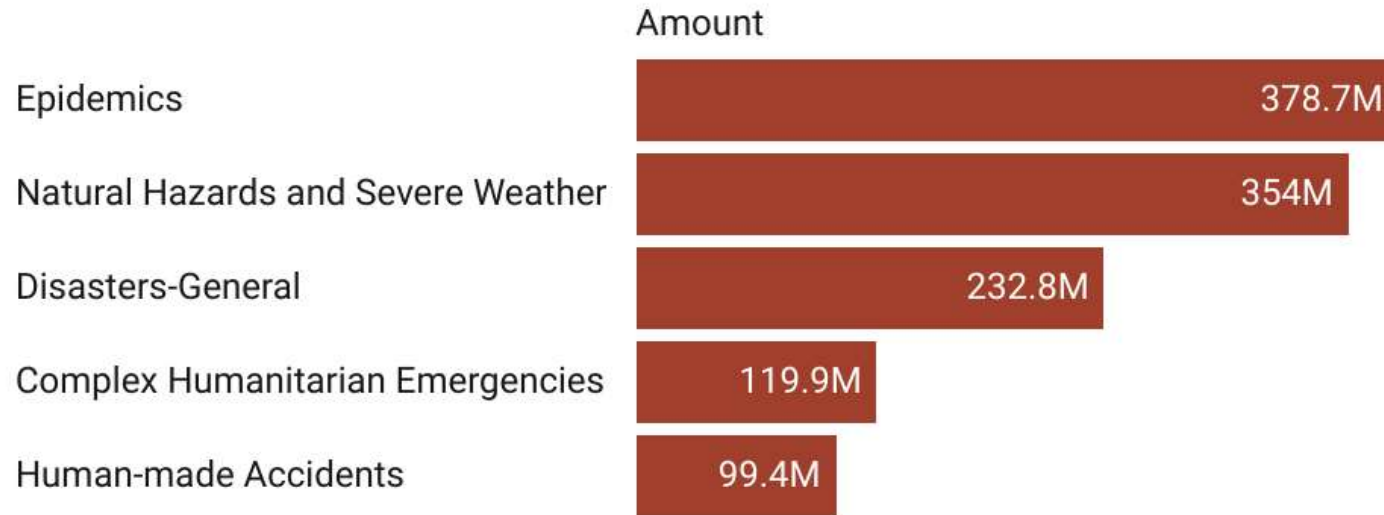
Identify patterns and drivers of philanthropic engagement in complex crises

Understand perceptions of philanthropy's role relative to the humanitarian ecosystem

Describe strategies for motivating action, from frontline and funder perspectives

Photo: Tom Remp

Philanthropic Funding by Disaster Type in 2023



The share of funding for complex humanitarian emergencies declined

Driven by unprecedented funding for the Ukraine humanitarian crisis, complex humanitarian emergencies (CHEs) received 17.4% of overall giving in 2022.

At \$119.9M, the share of funding for CHEs declined to 10.1% in 2023.

Based on Candid data as of April 2025

Chart: Center for Disaster Philanthropy • Source: Candid • Created with Datawrapper



Philanthropy Isn't Indifferent, It's Uncertain: Understanding Philanthropic Funding in Complex Humanitarian Emergencies

Barriers, Motivations, and Opportunities for Engagement
December 2025

Discussion Framing: Key Research Findings

1

Proximity, identity and connection are strong motivators

2

Funders feel alienated from the humanitarian ecosystem

3

Knowledge gaps, limited information, and complexity are strong barriers

Speakers



Patty McIlreavy

President & CEO

Center for Disaster
Philanthropy



Tirana Hassan

CEO

Doctors Without Borders
(MSF-USA)



Catherine Green

Head of Urgent Challenges

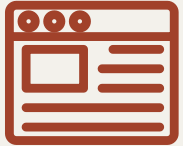
Minderoo Foundation



LESSONS FOR ENGAGEMENT

- 1. Collective giving builds confidence and reduces uncertainty.**
- 2. Trusted intermediaries can help build proximate relationships and navigate complexity.**
- 3. Alignment with mission, values and sectors provides an entry point to building partnerships.**

Expert Resources



Disaster Updates

- Weekly “What we’re watching” post
- Disaster profiles
- Blog posts on topical issues



Recovery Funds

- Long-term recovery focus
- Community-driven, equity-focused and holistic grantmaking



Expert Advisory Services

- Real-time disaster giving guidance
- Disaster giving planning
- Organizational curriculum planning and delivery



Resources

- Issue insights
- Research and evaluations
- Webinars



Coalition Building

- Bring funders together to collaborate, learn and take coordinated action

disasterphilanthropy.org

Thank You

For additional information or questions, contact:
webinars@disasterphilanthropy.org

CONNECT WITH US

DISASTERPHILANTHROPY.ORG

@CENTER4DISASTERPHILANTHROPY

